

23+50

24+00

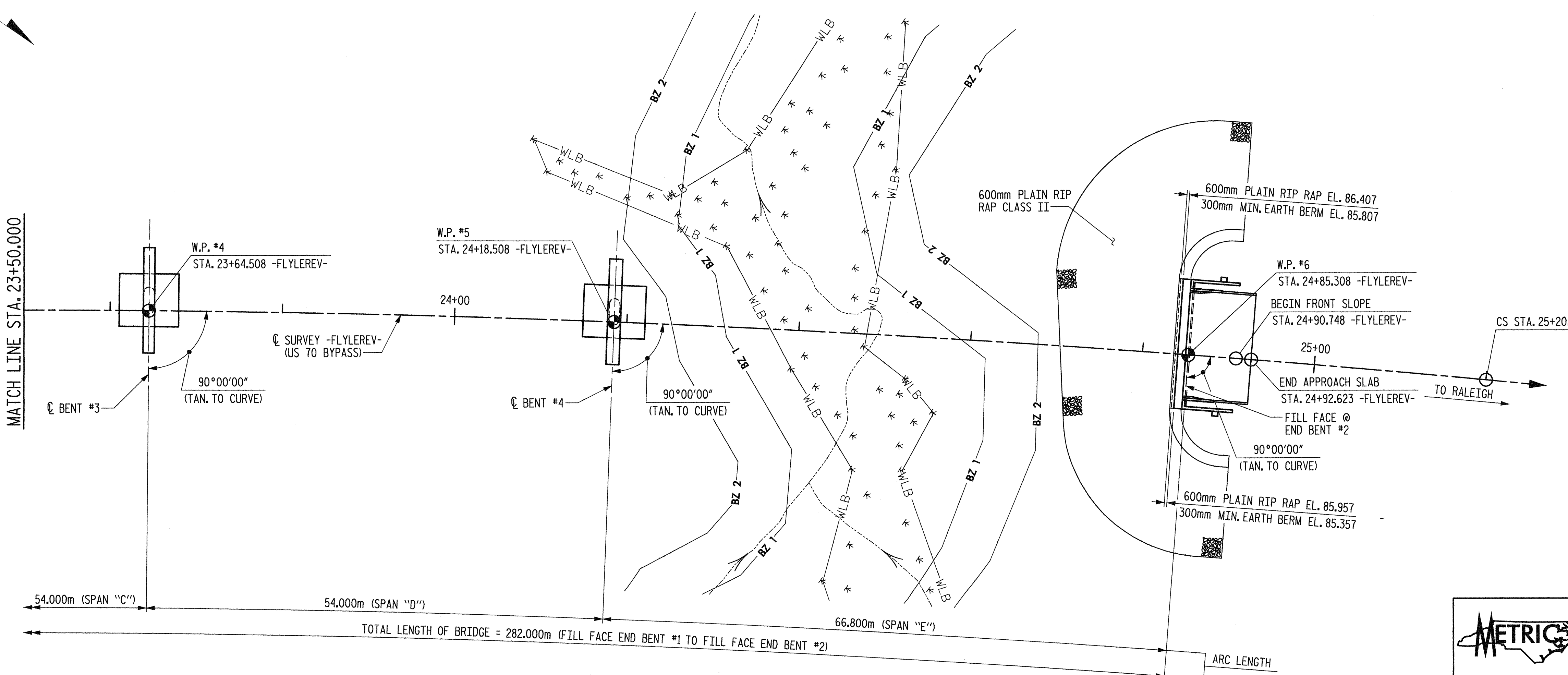
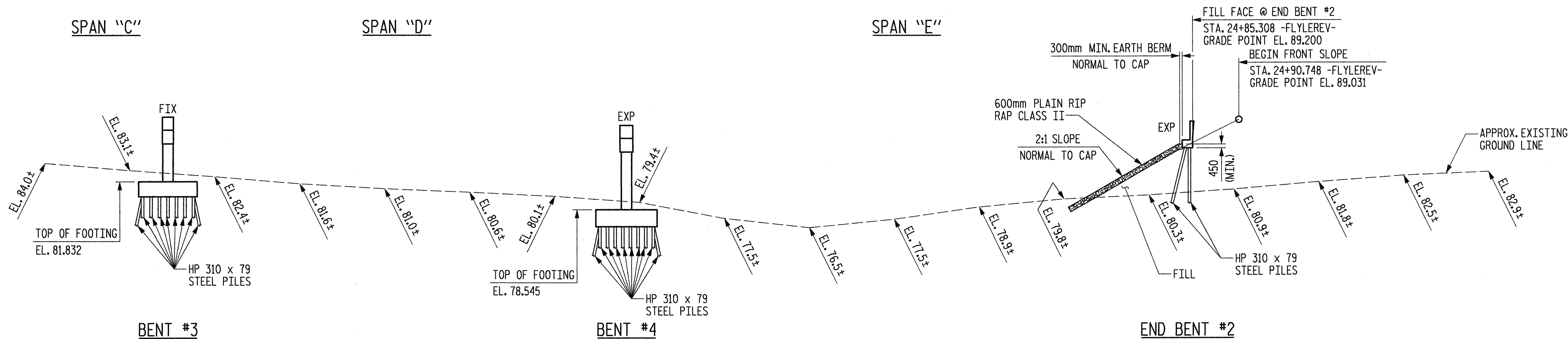
24+50

25+00

SPAN "C"

SPAN "D"

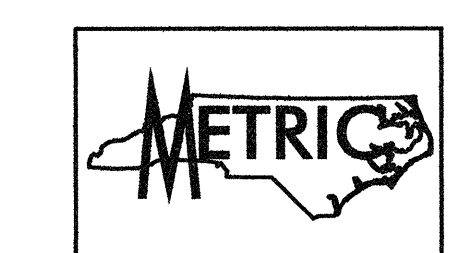
SPAN "E"



HORIZ. CURVE DATA - FLYLEREV-

PI	STA. 20+87.626 - FLYLEREV-
Δ	= 27°18'43.3" (RT.)
L	= 881.867m
T	= 449.477m
R	= 1,850.000m

PROJECT NO. R-2552AA
 WAKE-JOHNSTON COUNTY
 STATION: POT 28+31.359 -I1Y1-
 POC 22+59.308 -FLYLEREV-
 SHEET 2 OF 5 BRIDGE NO. 1088

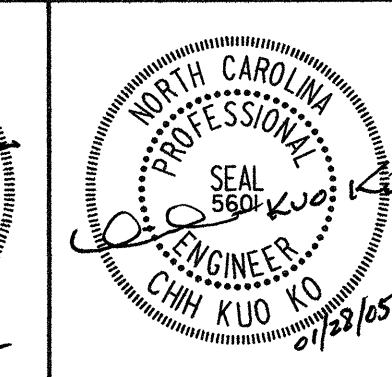
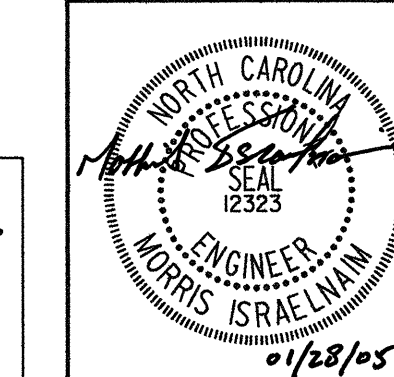


STATE OF NORTH CAROLINA
 DEPARTMENT OF TRANSPORTATION
 RALEIGH
 GENERAL DRAWING
 FOR BRIDGE ON
 FLYOVER EAST (US 70 BYPASS)
 OVER EXISTING I-40
 BETWEEN SR 1525 (CORNWALLIS ROAD)
 AND SR 2703 (NEW BETHEL ROAD)

REVISIONS					
NO.	BY:	DATE:	NO.	BY:	DATE:
1			3		
2			4		

SHEET NO. 5-85
TOTAL SHEETS 429

Plans prepared by:
KO & ASSOCIATES, P.C.
 Consulting Engineers
 1011 SCHAUB DR., SUITE #202
 RALEIGH, N.C. 27606
 For Division of Highways



DWG. NO. 2

PLOT: 01/27/2005
 FILE NAME: r:\p2552aa.dwg
 02:52:33 PM Ko & Associates, P.C.

DRAWN BY: B.E. LANNING DATE: JAN. 2005
 CHECKED BY: J.C. KO / A.K. ORR DATE: JAN. 2005