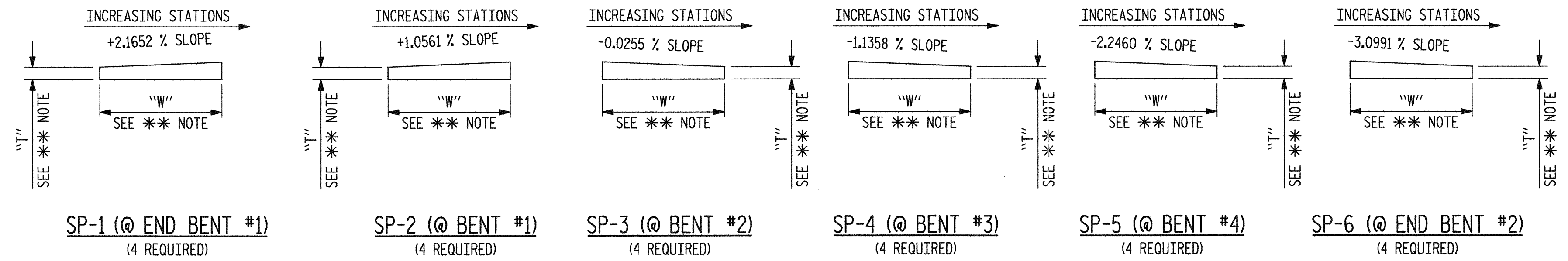


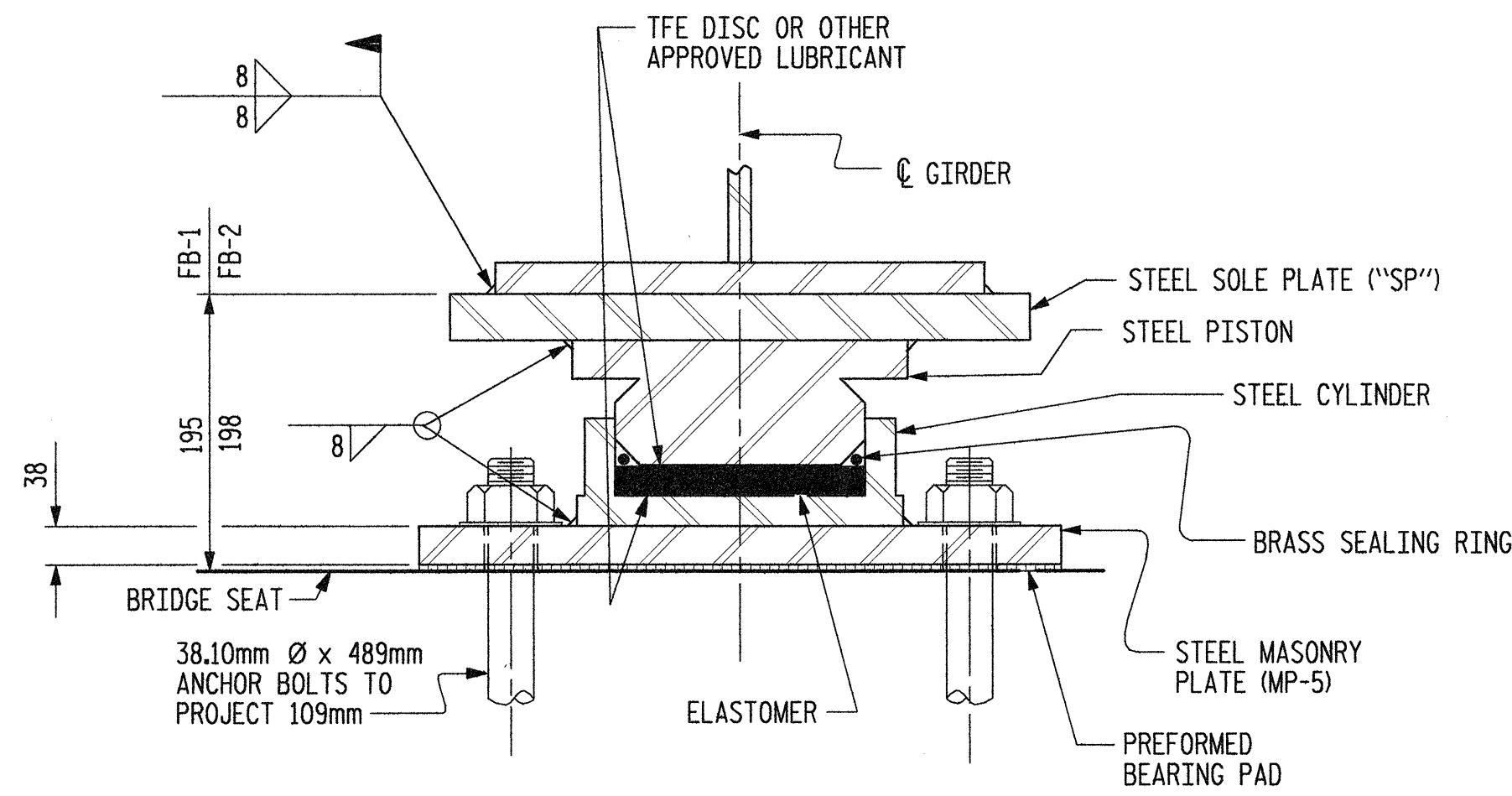
CUT-AWAY PLAN - BENT #2 & BENT #3

SOLE PLATE ("SP")		
LOCATION	BEARING	MARK
BENT #2	FB-1	SP-3
BENT #3	FB-2	SP-4



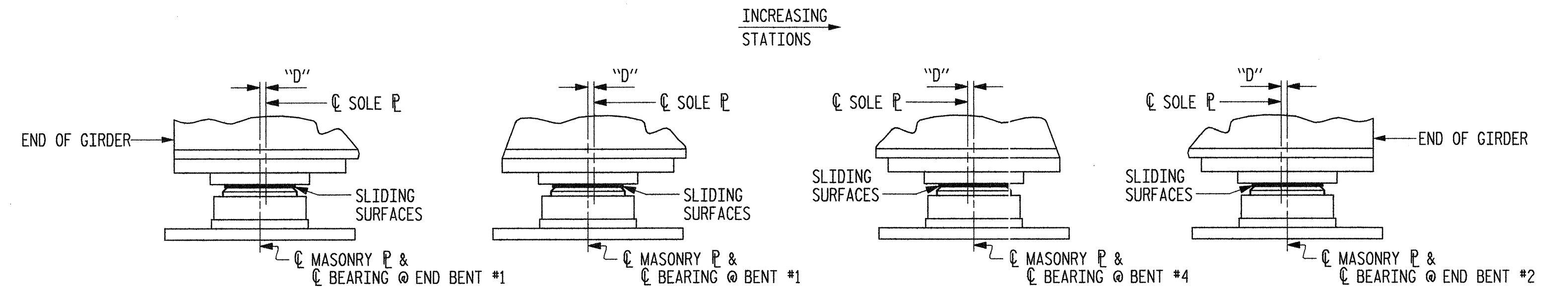
SOLE PLATE DETAILS

** NOTE: DIMENSIONS "W" AND "T" ARE TO BE DETERMINED BY THE MANUFACTURER.



SECTION A-A

FIXED POT BEARING DETAILS



TEMPERATURE SETTING DETAIL

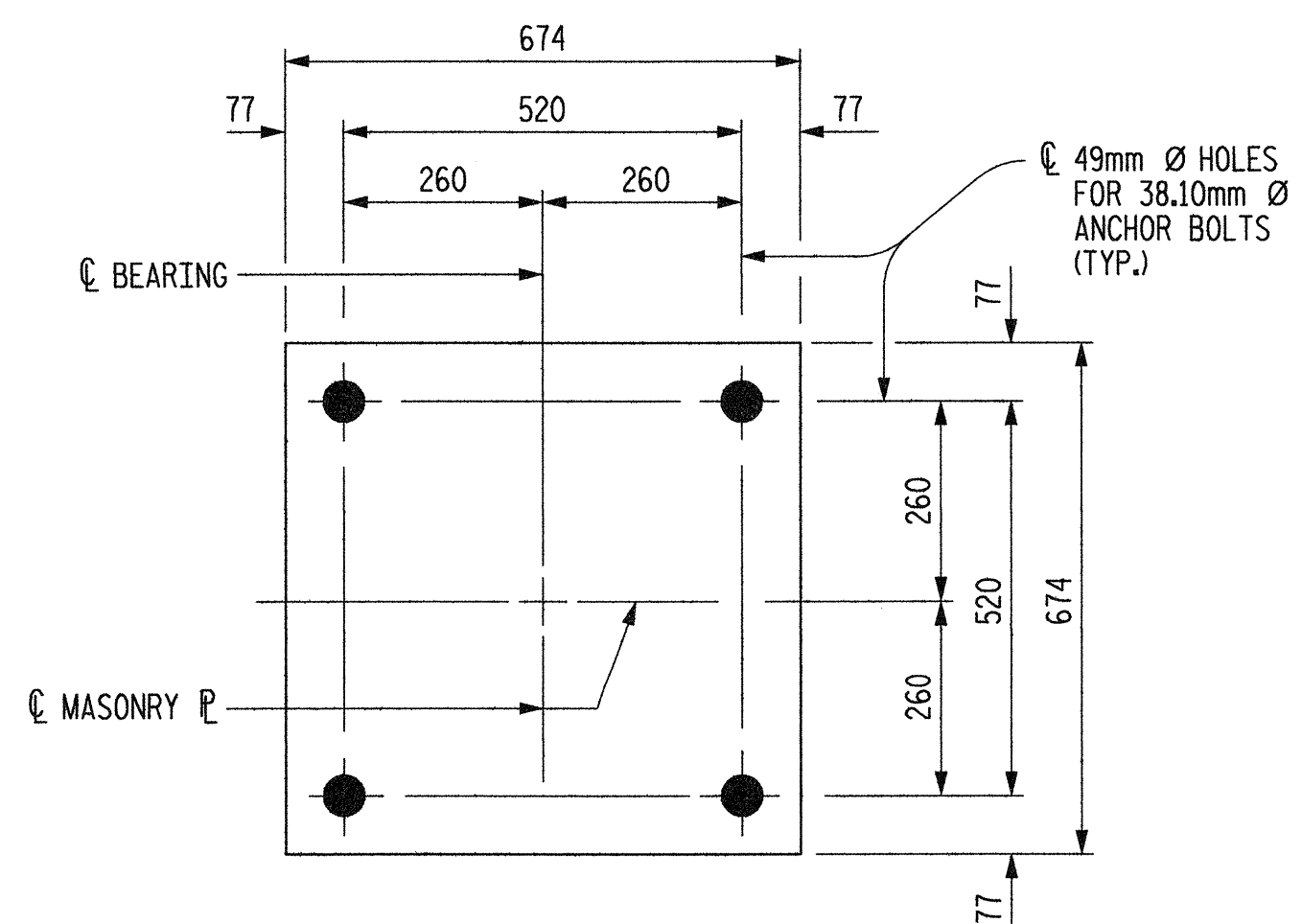
GIRDER	VERTICAL LOAD (KN)			LATERAL LOAD (KN)	TOTAL MOVEMENT (mm)
	DEAD	LIVE	TOTAL		
1	1830	780	2610	366	0
2	1870	870	2740	374	0
3	1735	790	2525	347	0
4	1620	750	2370	324	0

GIRDER	VERTICAL LOAD (KN)			LATERAL LOAD (KN)	TOTAL MOVEMENT (mm)
	DEAD	LIVE	TOTAL		
1	1575	760	2335	315	0
2	1700	855	2555	340	0
3	1695	795	2490	339	0
4	1655	765	2420	331	0

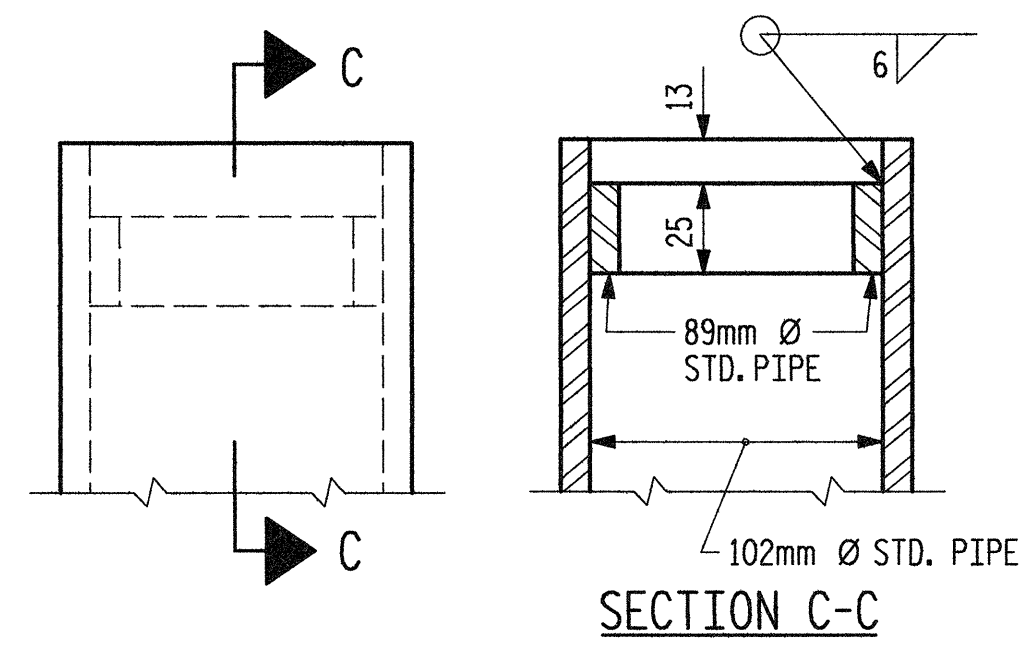
TABLE FOR PLATE SETTING DATA
FOR COMPUTING DIMENSION "D"
(EXPANSION POT BEARINGS)

TEMPERATURE AT TIME OF SETTING	0° C	16° C	32° C	*
END BENT #1	-25mm	0	25mm	11mm
BENT #1	-15mm	0	15mm	-3mm
BENT #4	-15mm	0	15mm	-5mm
END BENT #2	-28mm	0	28mm	13mm

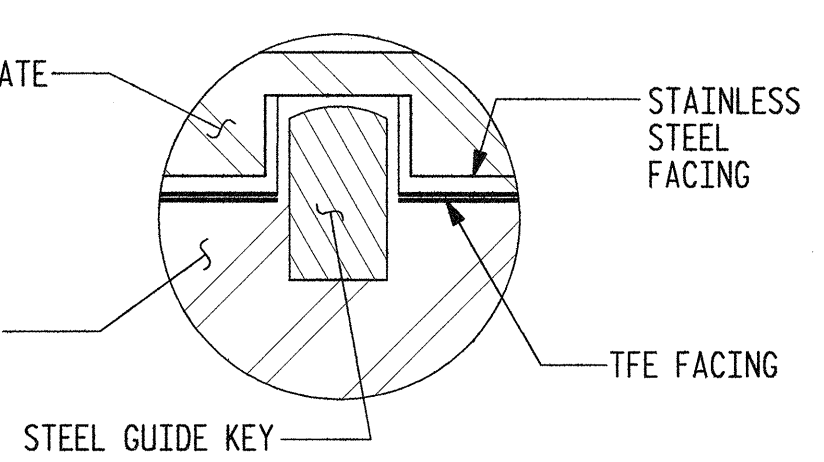
* CORRECTION FOR END ROTATION DUE TO WEIGHT OF SLAB AND COMPOSITE DEAD LOAD (BARRIER ONLY).



MASONRY PLATE MP-5 (8 REQ'D. @ BENT #2 & BENT #3)
MASONRY PLATE DETAILS



DETAIL "A"



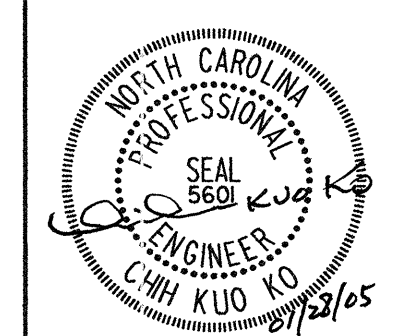
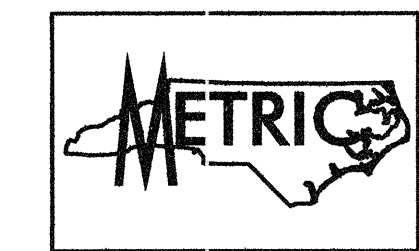
GUIDE KEY DETAIL

PROJECT NO. R-2552AA
WAKE-JOHNSTON COUNTY
STATION: 28+31.359 -I1Y1-

SHEET 2 OF 2

STATE OF NORTH CAROLINA
DEPARTMENT OF TRANSPORTATION
RALEIGH

SUPERSTRUCTURE POT BEARING DETAILS



Plans prepared by:
KO & ASSOCIATES, P.C.
Consulting Engineers
1011 SCHAUB DR. SUITE #202
RALEIGH, N.C. 27606
For Division of Highways

REVISIONS						SHEET NO.
NO.	BY:	DATE:	NO.	BY:	DATE:	TOTAL SHEETS
1			3			5-11Z
2			4			429

DWG. NO. 29

PLOT: 01/27/2005 8:32:35 PM Ko & Associates, P.C.
 FILE NAME: r1v2552aa.rvt.dwg

DRAWN BY: B.E. LANNING DATE: JAN. 2005
CHECKED BY: J.C. KO / A.K. ORR DATE: JAN. 2005