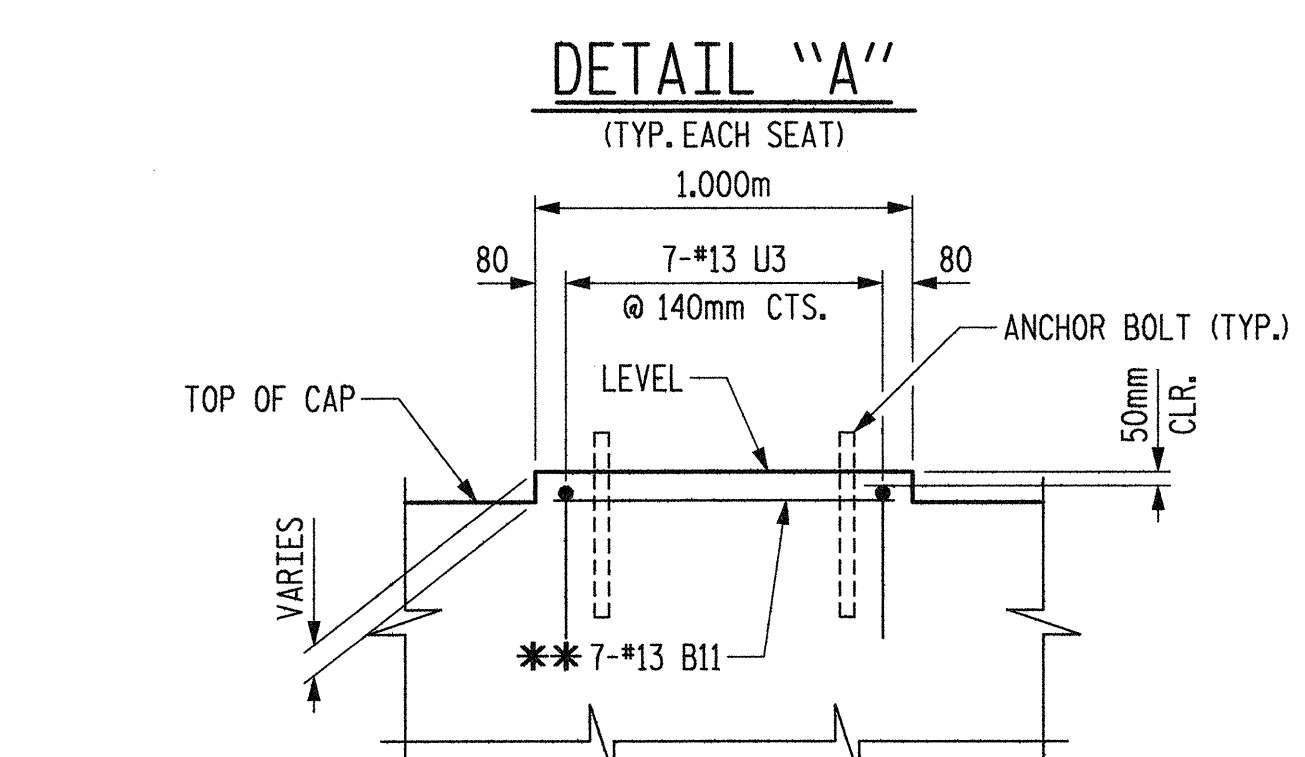
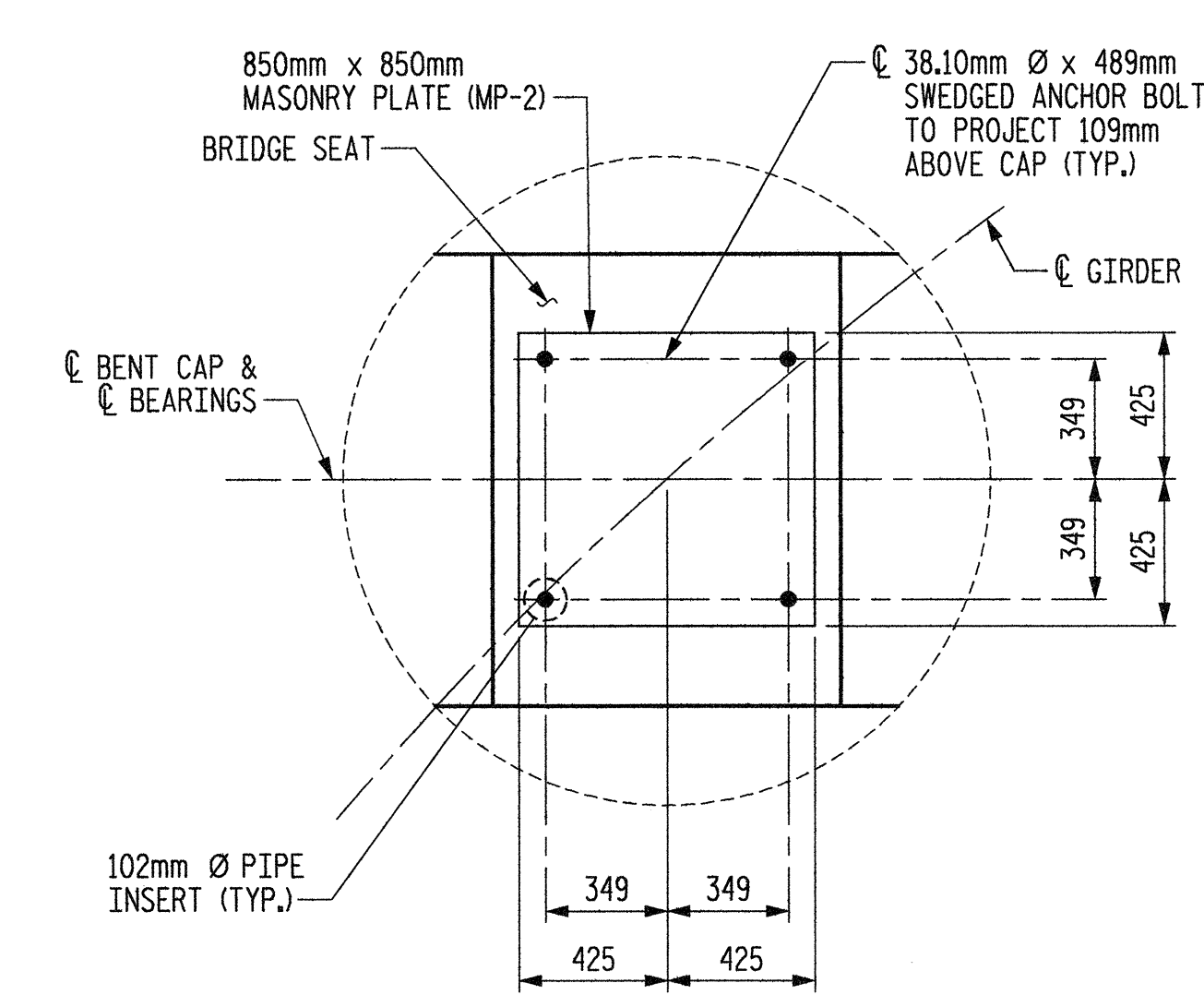
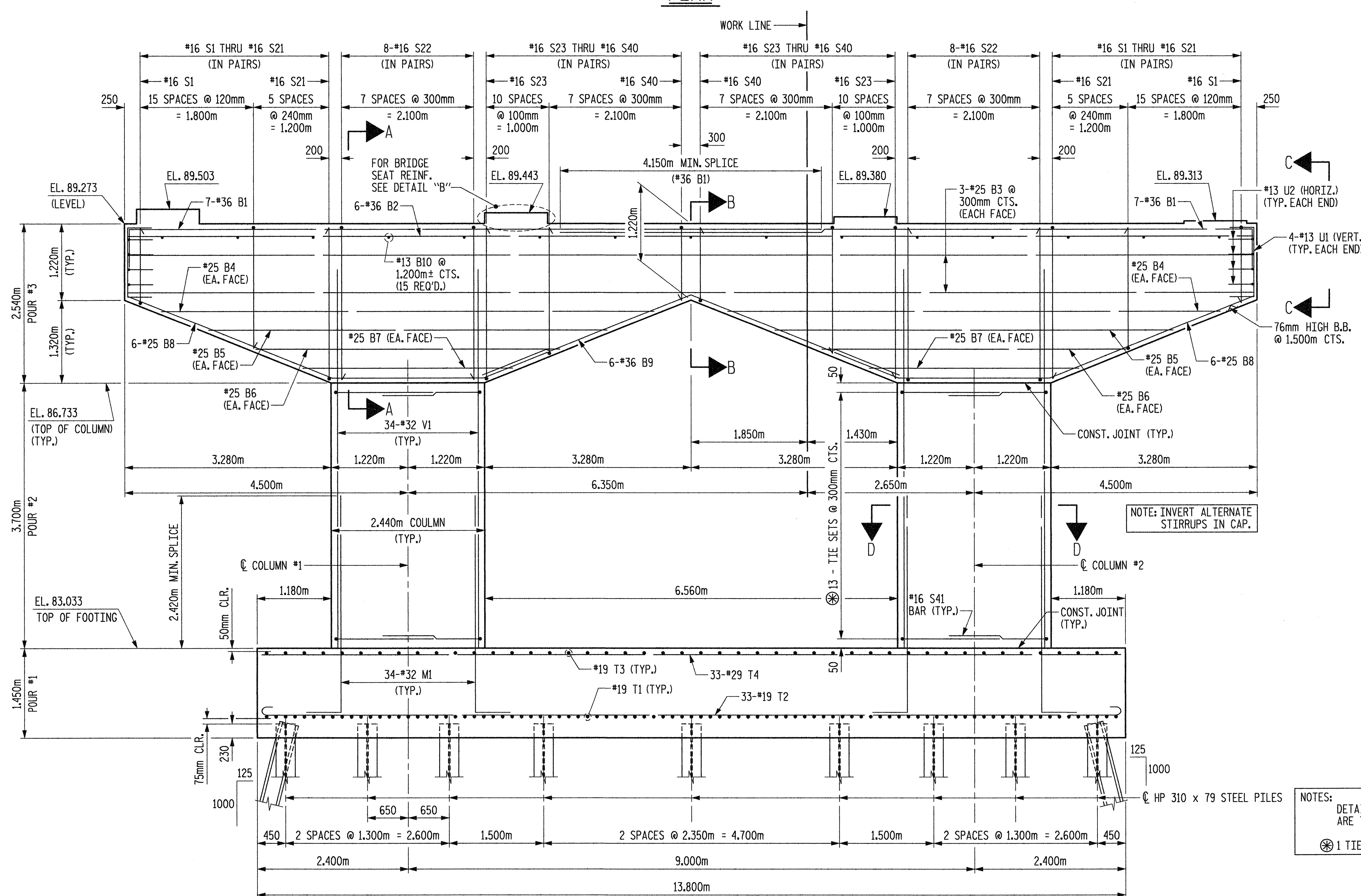


NOTES:  
 STIRRUPS IN CAP MAY BE SHIFTED AS NECESSARY TO CLEAR ANCHOR BOLTS.  
 PILES SHALL BE DRIVEN TO A MINIMUM BEARING CAPACITY OF 530 KN EACH.  
 FOR PILE SPLICE DETAILS, SEE "SUBSTRUCTURE END BENT #1", SHEET 3 OF 3.  
 WHEN DRIVING PILES, THE MAXIMUM BLOW COUNT SHALL NOT BE EXCEEDED.  
 DETAILED DRAWINGS FOR FALSEWORK AND FORMS FOR THIS HAMMERHEAD BENT SHALL BE SUBMITTED FOR BENT CAP. SEE SHEET SNSM AND SPECIAL PROVISIONS.  
 FOR OTHER NOTES, SEE "GENERAL NOTES AND TOTAL BILL OF MATERIAL" SHEET.  
 FOR END ELEVATION, SECTION A-A, SECTION B-B, END VIEW C-C AND SECTION D-D, SEE SHEET 2 OF 3.

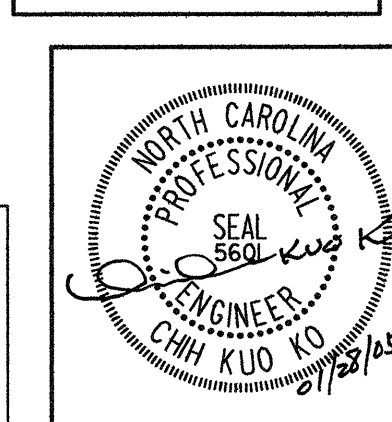
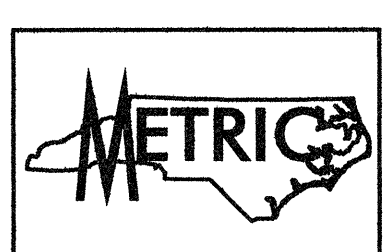


NOTE: \*\* 7-#13 B11 SHALL BE PLACED IN LINE WITH THE 7-#36 B1.



NOTES:  
 DETAILS SHOWN FOR COLUMNS ARE TYPICAL.  
 ① TIE SET = 2-#16 S41 & 3-#16 S42

Plans prepared by:  
**KO & ASSOCIATES, P.C.**  
 Consulting Engineers  
 1011 SCHAUB DR. SUITE #202  
 RALEIGH, N.C. 27606  
 For Division of Highways



PROJECT NO. R-2552AA  
 WAKE-JOHNSTON COUNTY  
 STATION: 28+31.359 -11Y1-

SHEET 1 OF 3

STATE OF NORTH CAROLINA DEPARTMENT OF TRANSPORTATION RALEIGH					
SUBSTRUCTURE BENT #1					
REVISIONS					
NO.	BY:	DATE:	NO.	BY:	DATE:
1			3		
2			4		

SHEET NO. S-120  
 TOTAL SHEETS 429

PLOT: 01/27/2005 03:38:28 PM Ko & Associates, P.C.  
 FILE NAME: r1v2552aa.dwg, r3.dwg

DRAWN BY: B.E. LANNING DATE: JAN. 2005  
 CHECKED BY: J.C. KO / A.K. ORR DATE: JAN. 2005

**ELEVATION**