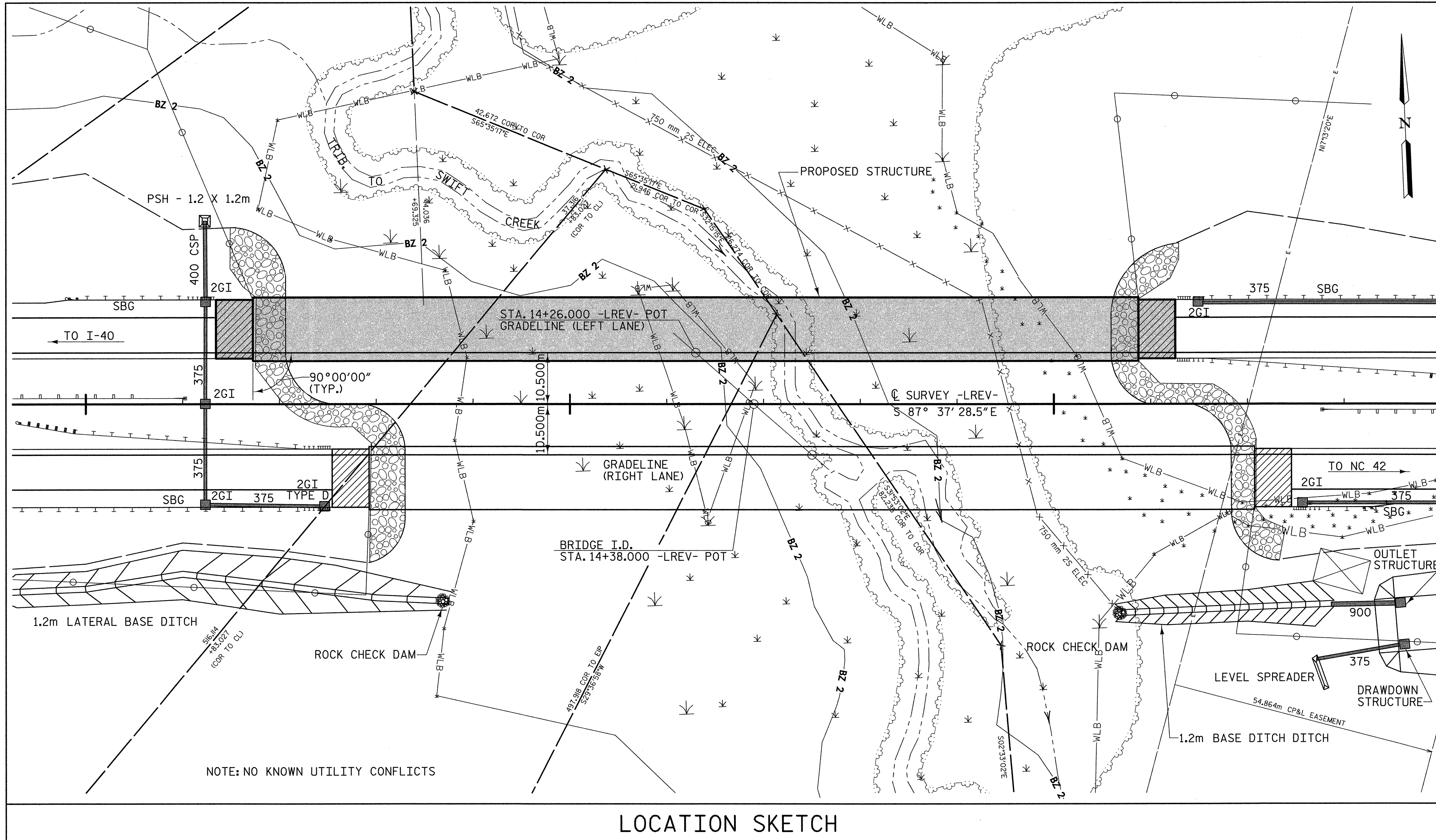


BENCH MARK: BL-713 -L- STA. 12+22.891  
 1.858m LT. REBAR & CAP  
 ELEV. 68.144 NGVD 29



LOCATION SKETCH

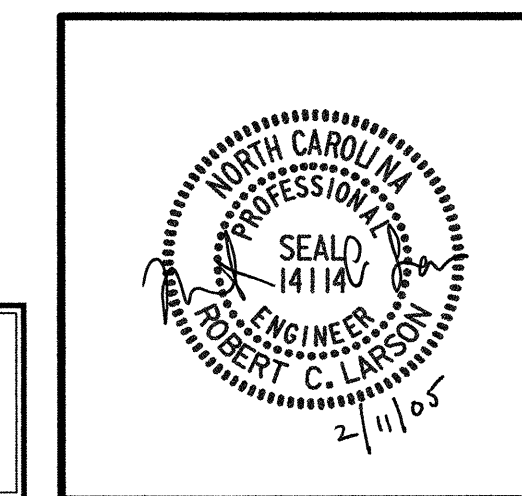


PROJECT NO. R-2552AA  
WAKE - JOHNSTON COUNTY  
 STATION: 14+38.000 -LREV- POT

SHEET 3 OF 4

STATE OF NORTH CAROLINA  
 DEPARTMENT OF TRANSPORTATION  
 RALEIGH

GENERAL DRAWING FOR BRIDGE  
 ON -LREV- (US 70 BYPASS) OVER  
 TRIBUTARY TO SWIFT CREEK  
 BETWEEN I-40 AND NC 42  
 (LEFT LANE)



REVISIONS				SHEET NO.	
NO.	BY:	DATE:	NO.	BY:	DATE:
1			3		
2			4		

TOTAL SHEETS: 429

REFERENCE NO. BL-3

02/04/2005 04:04:46 PM G:\Project\2004\03\01R-2552\Structures\Site 4\Left Lane\R2552AA\_SD.GD\_02.dgn

DRAWN BY: W. B. ALLEN DATE: 6/04  
 CHECKED BY: R. C. LARSON DATE: 7/04