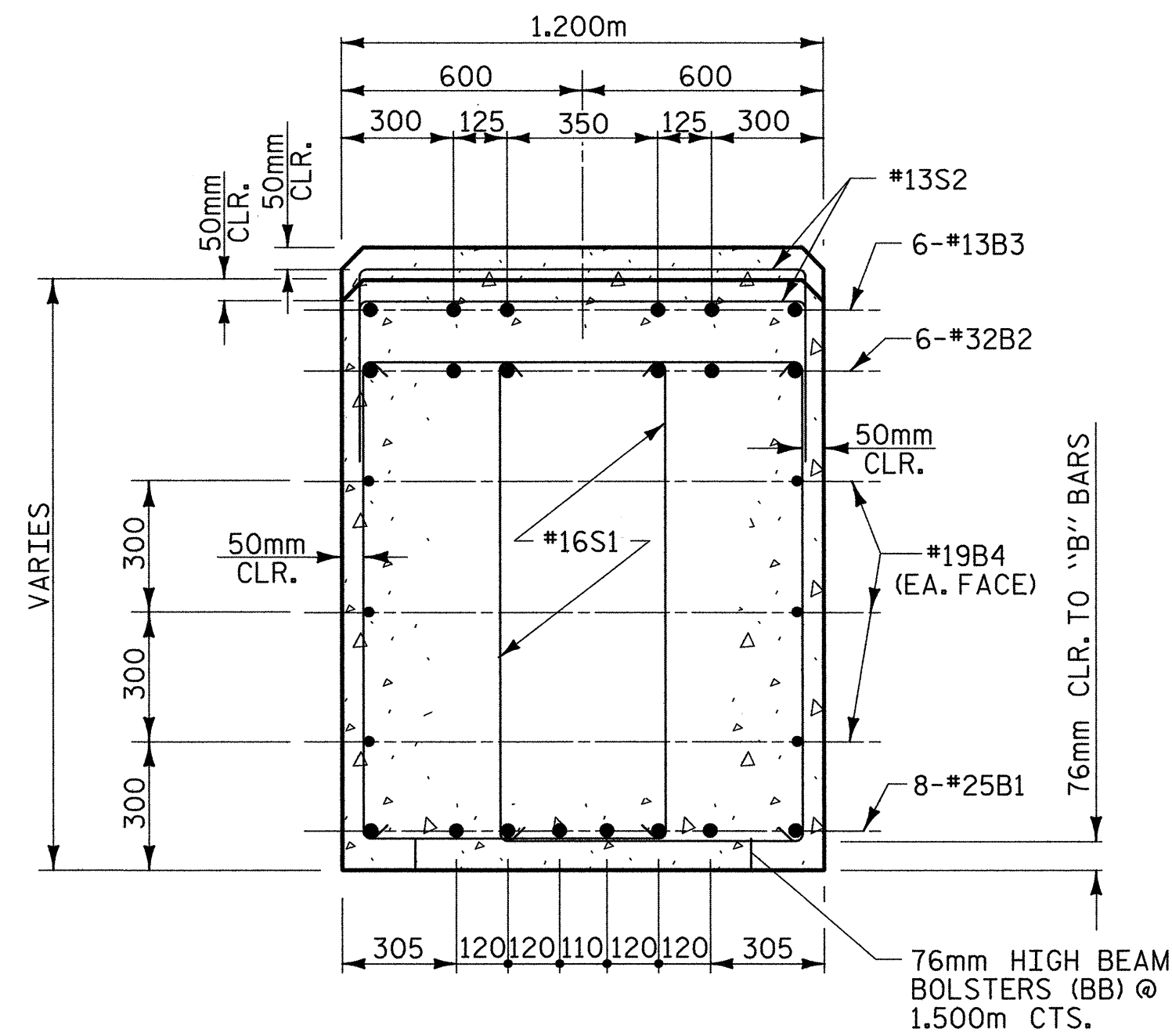


**SECTION A-A**



**SECTION B-B**

**NOTES:**

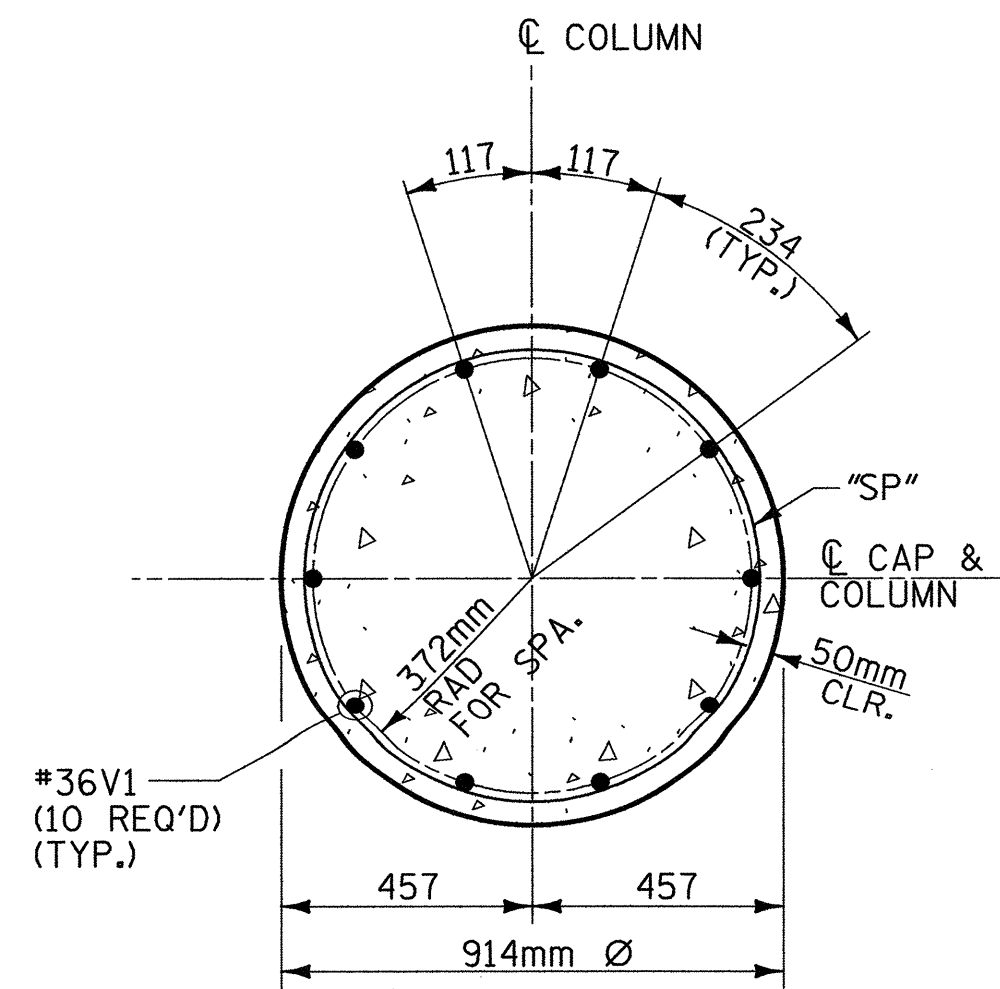
STIRRUPS IN THE CAP MAY BE SHIFTED AS NECESSARY TO CLEAR ANCHOR BOLTS.

HOOKS ON "V" BARS MAY BE TURNED AS NECESSARY FOR PLACING REINFORCING STEEL.

THE CONTRACTOR'S ATTENTION IS CALLED TO THE FACT THAT THE LONGITUDINAL REINFORCEMENT FOR THE DRILLED PIERS IS DETAILED WITH ONE METER OF EXTRA LENGTH.

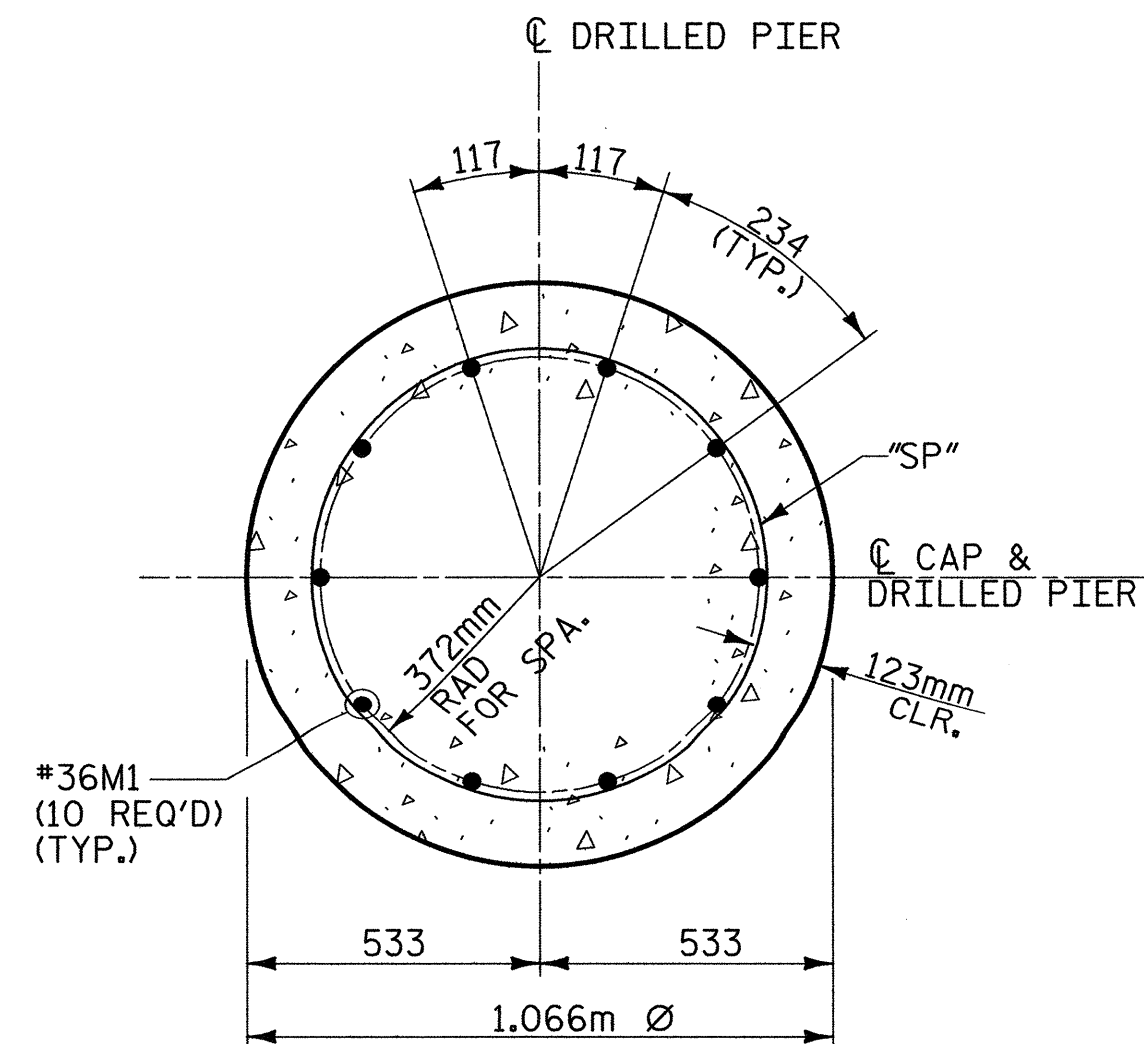
ALL STEEL IN THE DRILLED PIERS IS INCLUDED IN THE PAY ITEMS FOR "REINFORCING STEEL" AND "SPIRAL COLUMN REINFORCING STEEL".

FOR PERMANENT STEEL CASING, SEE SPECIAL PROVISIONS FOR DRILLED PIERS.



**SECTION THRU COLUMN**

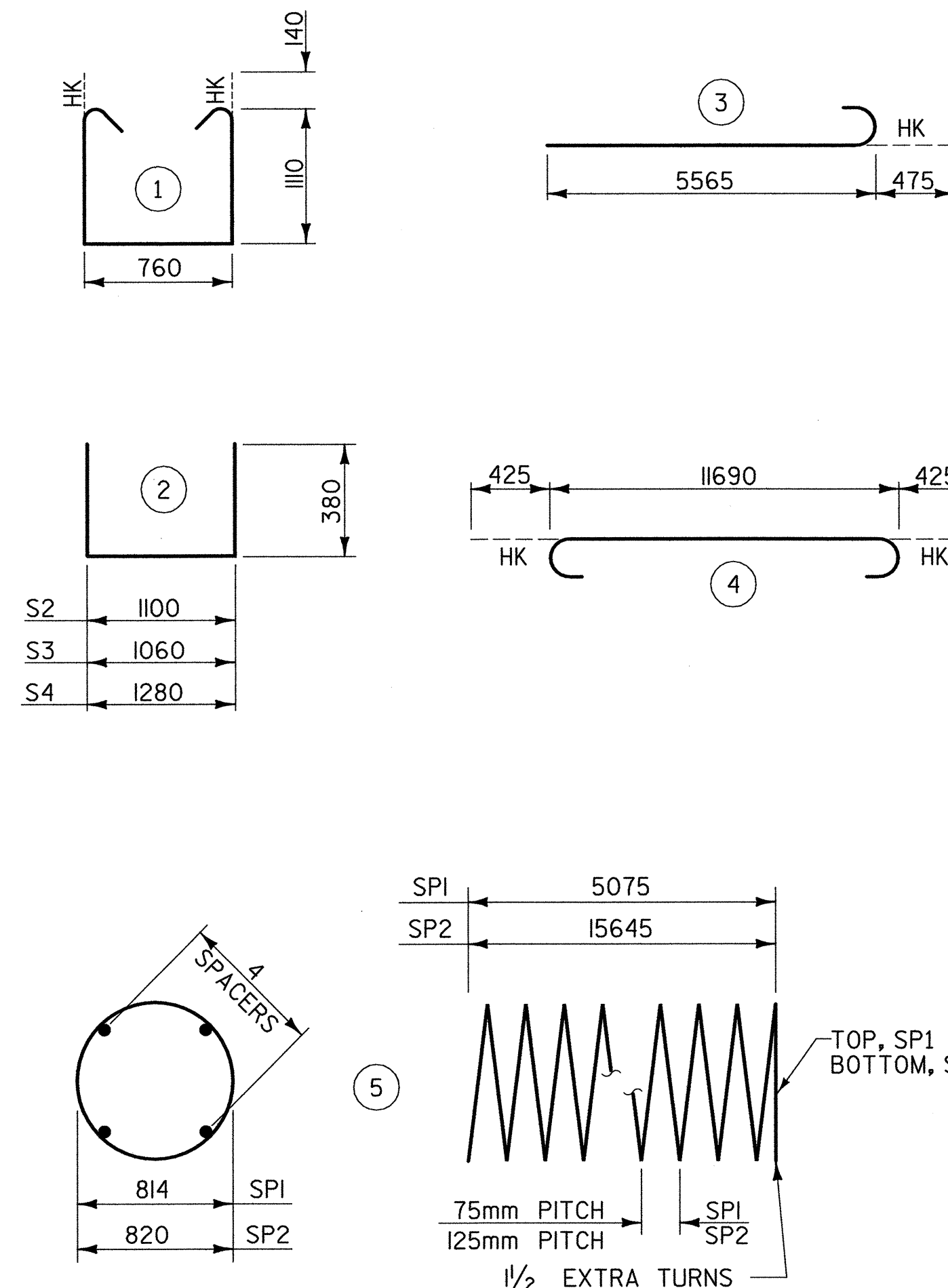
(ALL COLUMNS SIMILAR)  
(SEE ELEVATION FOR BAR MARKS)



**SECTION THRU DRILLED PIER**

(ALL DRILLED PIERS SIMILAR)  
(SEE ELEVATION FOR BAR MARKS)

**BAR TYPES**



ALL BAR DIMENSIONS ARE OUT TO OUT

\*\* THE SP1 SPIRAL REINFORCING STEEL SHALL BE W20 OR D-20 COLD DRAWN WIRE OR #13 PLAIN OR DEFORMED BAR

THE SP2 SPIRAL REINFORCING STEEL SHALL BE W31 OR D-31 COLD DRAWN WIRE OR #16 PLAIN OR DEFORMED BAR

**BILL OF MATERIAL**

FOR BENT 4

BAR	NO.	SIZE	TYPE	LENGTH	WEIGHT
B1	8	#25	STR	11700	372
B2	6	#32	4	12540	482
B3	6	#13	STR	4600	27
B4	6	#19	STR	11700	157
M1	30	#36	STR	18980	4502
S1	80	#16	1	3260	405
S2	33	#13	2	1860	61
S3	14	#13	2	1820	25
S4	4	#13	2	2040	8
V1	30	#36	3	6040	1433
TOTAL REINFORCING STEEL =					7472 kg
SP1	3	**	5	170141	507
SP2	3	**	5	315736	1470

SPIRAL COLUMN REINFORCING STEEL = 1977 kg

CLASS "A" CONCRETE - CU. METERS

POUR 2 (COLUMNS)	9.8 C.M.
POUR 3 (CAP)	18.5 C.M.
TOTAL	28.3 C.M.

DRILLED PIER @ BENT 4

1066mm DIA. DRILLED PIERS IN SOIL = 41.6 LIN M.

1066mm DIA. DRILLED PIERS NOT IN SOIL = 5.4 LIN M.

PERMANENT STEEL CASING FOR 1066mm DIA. DRILLED PIER = 9.2 LIN M.

CSL TUBES = 198.3 LIN M.

DRILLED PIER CONC. (FOR INFORMATION ONLY) = 41.9 C.M.

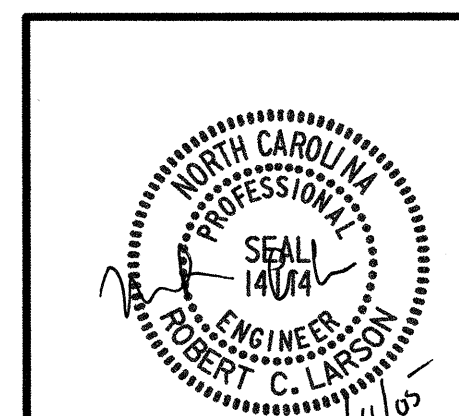


PROJECT NO. R-2552AA  
WAKE - JOHNSTON COUNTY  
STATION: 14+38.000 -LREV- POT

SHEET 2 OF 2

STATE OF NORTH CAROLINA  
DEPARTMENT OF TRANSPORTATION  
RALEIGH

**SUBSTRUCTURE  
BENT 4  
(RIGHT LANE)**



**REVISIONS**

NO.	BY:	DATE:	NO.	BY:	DATE:	SHEET NO.
1			3			TOTAL SHEETS
2			4			429

REFERENCE NO. BR-33

02/04/2005 07:49:52 AM G:\p\p\ject\2004\03-00R-2552\Structures\S1fe A\Right Lane\R2552AA\_SD\_B4\_02.dgn

DRAWN BY: J. P. SHERMAN DATE: 11/04  
CHECKED BY: R. C. LARSON DATE: 12/04