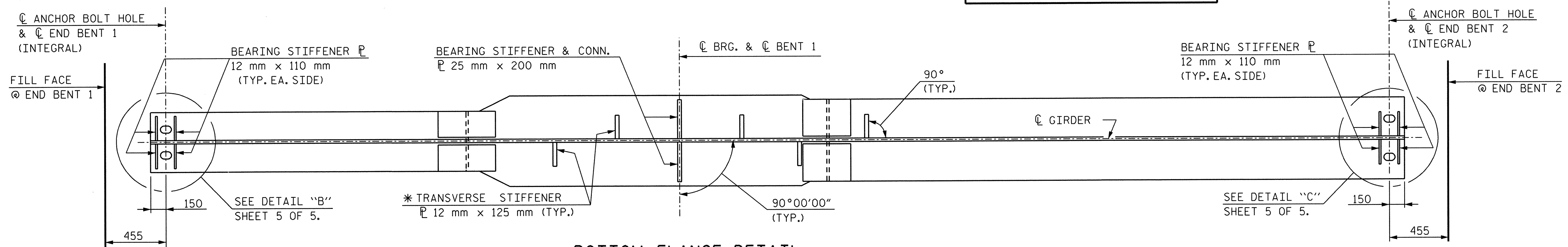


GIRDER ELEVATION

(DIAPHRAGM CONNECTOR PLATES NOT SHOWN)

* PLACE ALL TRANSVERSE STIFFENERS ON THE INSIDE FACE OF THE WEB ON EXTERIOR GIRDERS.



BOTTOM FLANGE DETAIL

(INTERIOR GIRDER SHOWN, EXTERIOR GIRDER SIMILAR, EXCEPT AS NOTED)

NOTES:

ALL STRUCTURAL STEEL SHALL BE AASHTO M270 GRADE 345W AND PAINTED IN ACCORDANCE WITH SYSTEM 4 OF ARTICLE 442-7 OF THE STANDARD SPECIFICATIONS UNLESS OTHERWISE NOTED ON PLANS.

ALL DIMENSIONS SHOWN ARE HORIZONTAL OR VERTICAL UNLESS OTHERWISE NOTED.

ALL FIELD CONNECTIONS TO BE 22.23 mm Ø HIGH STRENGTH BOLTS UNLESS OTHERWISE NOTED.

SHOP SPLICES ARE PERMITTED TO LIMIT THE MAXIMUM REQUIRED FLANGE PIECE LENGTHS TO 18 m AND WEB PIECE LENGTHS TO 14 m. PERMITTED FLANGE AND WEB SHOP SPLICES SHALL NOT BE LOCATED WITHIN 4.5 m OF MAXIMUM DEAD LOAD DEFLECTION, (NOR WITHIN 4.5 m OF INTERMEDIATE BEARINGS OF CONTINUOUS UNITS). KEEP 600 mm MINIMUM BETWEEN WEB AND FLANGE SHOP SPLICES. KEEP 150 mm MINIMUM BETWEEN CONNECTOR PLATE OR TRANSVERSE STIFFENER WELDS AND WEB OR FLANGE SHOP SPLICES.

STUDS ON GIRDERS MAY BE SHIFTED UP TO 25 mm IF NECESSARY TO CLEAR FLANGE SPLICE WELD.

TENSION ON THE AASHTO M164 BOLTS SHALL BE CALIBRATED USING DIRECT TENSION INDICATOR WASHERS IN ACCORDANCE WITH ARTICLE 440-10 OF THE STANDARD SPECIFICATIONS.

FOR DETAIL OF END OF GIRDERS, SEE SHEET 5 OF 5.

① CHАРY V-NOTCH TESTS ARE REQUIRED FOR ALL TOP OR BOTTOM FLANGE PLATES WHICH FALL WITHIN THESE LIMITS, ALL WEB PLATES, AND ALL SPLICE PLATES. IF A PERMITTED SHOP FLANGE SPLICE IS NOT USED, CHАРY V-NOTCH TESTS WILL BE REQUIRED FOR THE ENTIRE TOP FLANGE PLATE. FOR CHАРY V-NOTCH TEST, SEE ARTICLE 1072-9 OF THE STANDARD SPECIFICATIONS.

② NO WELDING OF FORMS OR FALSEWORK TO THE TOP FLANGE WILL BE PERMITTED IN THIS REGION.

PROJECT NO. R-2552AA
WAKE / JOHNSTON COUNTY
STATION: 27+61.028 -L- P.O.T.

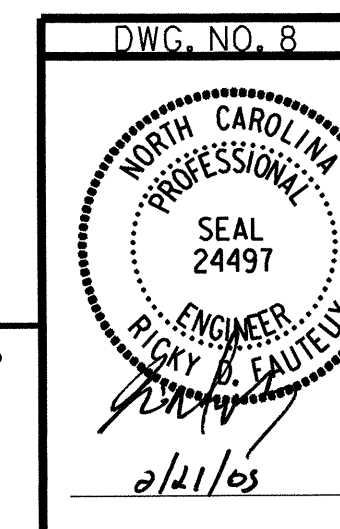
SHEET 1 OF 5

STATE OF NORTH CAROLINA
DEPARTMENT OF TRANSPORTATION
RALEIGH

SUPERSTRUCTURE
GIRDER DETAILS

JANUARY 2005

NO.		BY:		DATE:		NO.		BY:		DATE:		SHEET NO.	
1						3						5-235	
2						4						TOTAL SHEETS	429



RUMMEL, KLEPPER & KAHL, LLP
consulting engineers
5800 FARINGTON PLACE - SUITE 105
RALEIGH, NORTH CAROLINA 27609-3960

G:\COMMONS\304046\BRIDGE\SITE5\DCN\FINAL\R2552AA-SD-SSI-05.DGN

DRAWN BY : B. PARRISH DATE : 01/05
CHECKED BY : R. D. FAUTEUX DATE : 01/05