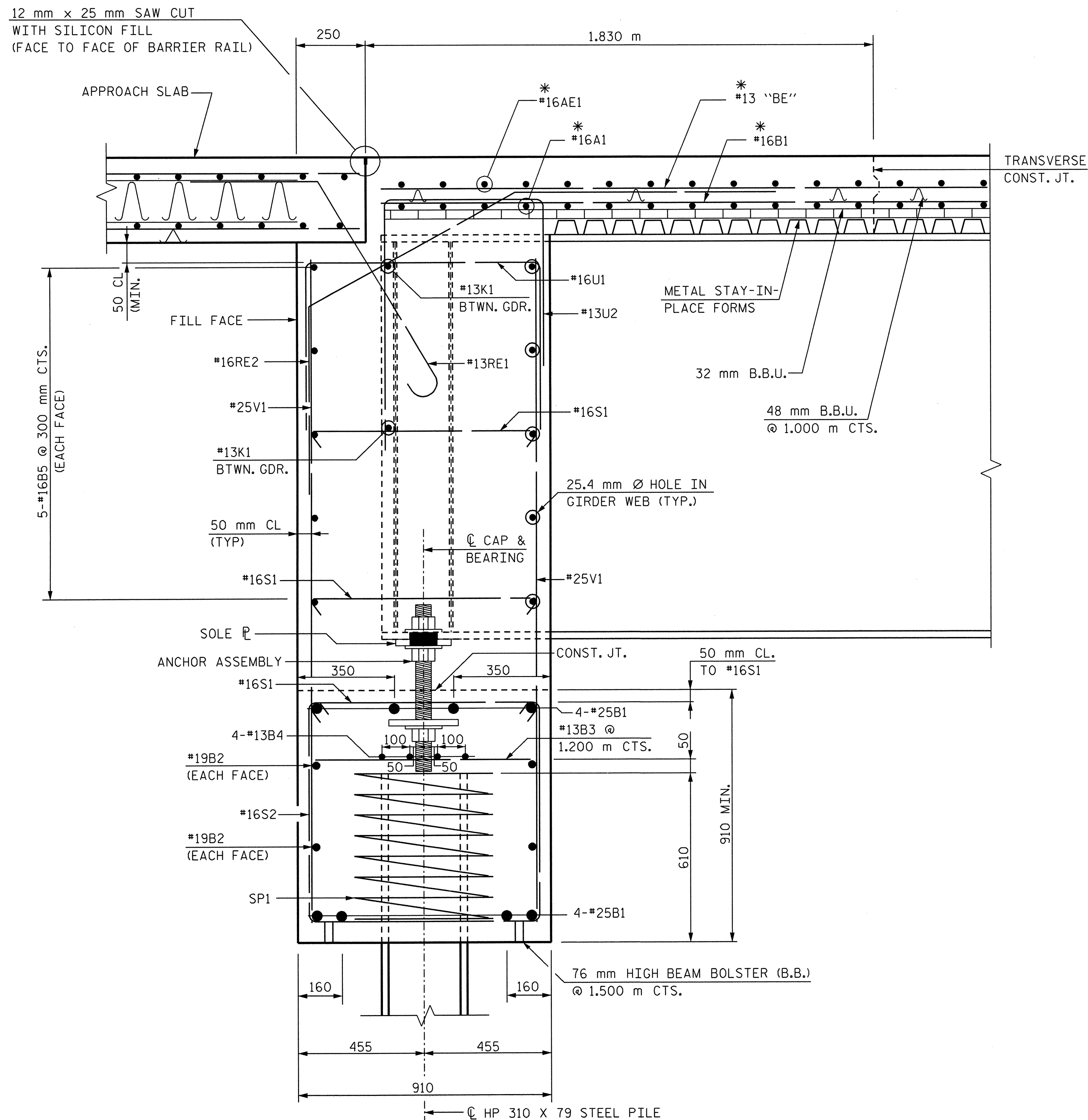


* BARS ARE PLACED ON "SUPERSTRUCTURE BILL OF MATERIAL" SHEET



SECTION A-A

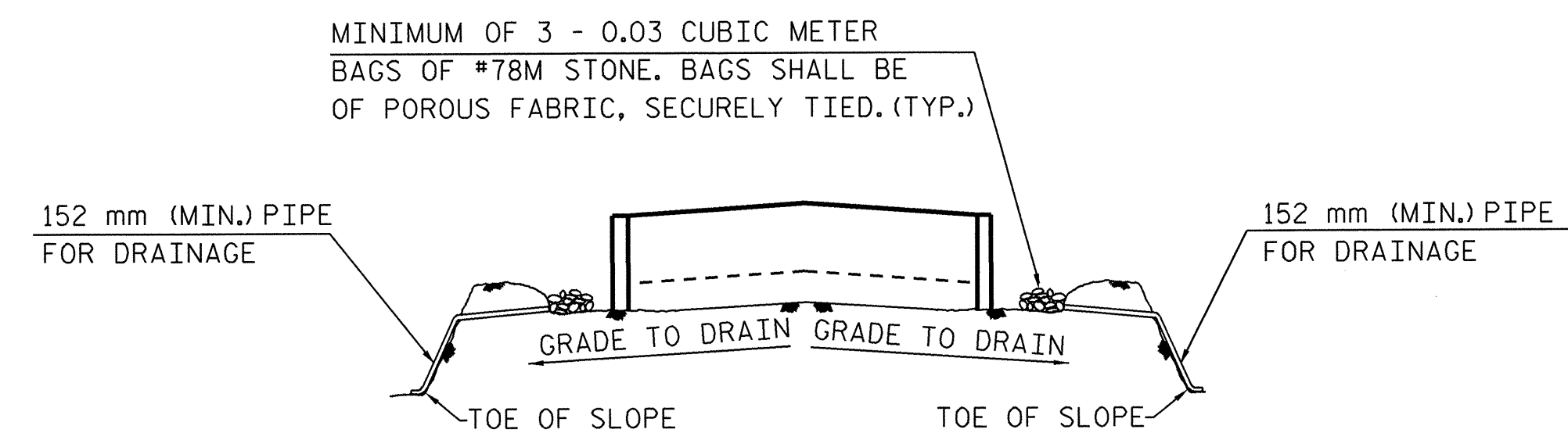
NOTES:

STIRRUPS IN THE CAP MAY BE SHIFTED AS NECESSARY TO CLEAR ANCHOR BOLTS.

FOR CONSTRUCTION SEQUENCE, SEE "INTEGRAL END BENT DETAILS," SHEET 5 OF 5.

FOR DETAILS OF ANCHOR ASSEMBLY AND SOLE PLATE, SEE "INTEGRAL END BENT DETAILS," SHEET 5 OF 5.

FOR PILE SPLICE DETAILS, SEE "END BENT 1 DETAILS," SHEET 2 OF 3.



TEMPORARY DRAINAGE AT END BENT

NOTES:

BAGGED STONE AND PIPE SHALL BE PLACED IMMEDIATELY AFTER COMPLETION OF END BENT EXCAVATION. PIPE MAY BE EITHER CONCRETE, CORRUGATED STEEL, CORRUGATED ALUMINUM ALLOY, OR CORRUGATED PLASTIC. PERFORATED PIPE WILL NOT BE ALLOWED.

BAGGED STONE SHALL REMAIN IN PLACE UNTIL THE ENGINEER DIRECTS THAT IT BE REMOVED. THE CONTRACTOR SHALL REMOVE AND DISPOSE OF SILT ACCUMULATIONS AT BAGGED STONE WHEN SO DIRECTED BY THE ENGINEER. BAGS SHALL BE REMOVED AND REPLACED WHENEVER THE ENGINEER DETERMINES THAT THEY HAVE DETERIORATED AND LOST THEIR EFFECTIVENESS.

NO SEPARATE PAYMENT WILL BE MADE FOR THIS WORK AND THE ENTIRE COST OF THIS WORK SHALL BE INCLUDED IN THE UNIT CONTRACT PRICE FOR THE SEVERAL PAY ITEMS.

PROJECT NO. R-2552AA
WAKE / JOHNSTON COUNTY
 STATION: 27+61.028 -L- P.O.T.

SHEET 2 OF 3

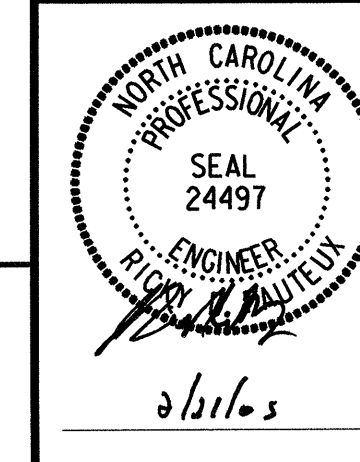
STATE OF NORTH CAROLINA
 DEPARTMENT OF TRANSPORTATION
 RALEIGH

SUBSTRUCTURE
 END BENT 2
 DETAILS

JANUARY 2005

REVISIONS			REVISIONS			SHEET NO.	
NO.	BY:	DATE:	NO.	BY:	DATE:	TOTAL SHEETS	
1			3			5-250	
2			4			429	

DWG. NO. 23



RUMMEL, KLEPPER & KAHL, LLP
 consulting engineers
 5800 FARINWOOD PLACE - SUITE 105
 RALEIGH, NORTH CAROLINA 27609-3960

G:\COMMONS\304046\BRIDGE\SITES\DCN\FINAL\ R2552AA-SD-EB22-05.DGN

DRAWN BY : B. PARRISH DATE : 01/05
 CHECKED BY : R. D. FAUTEUX DATE : 01/05