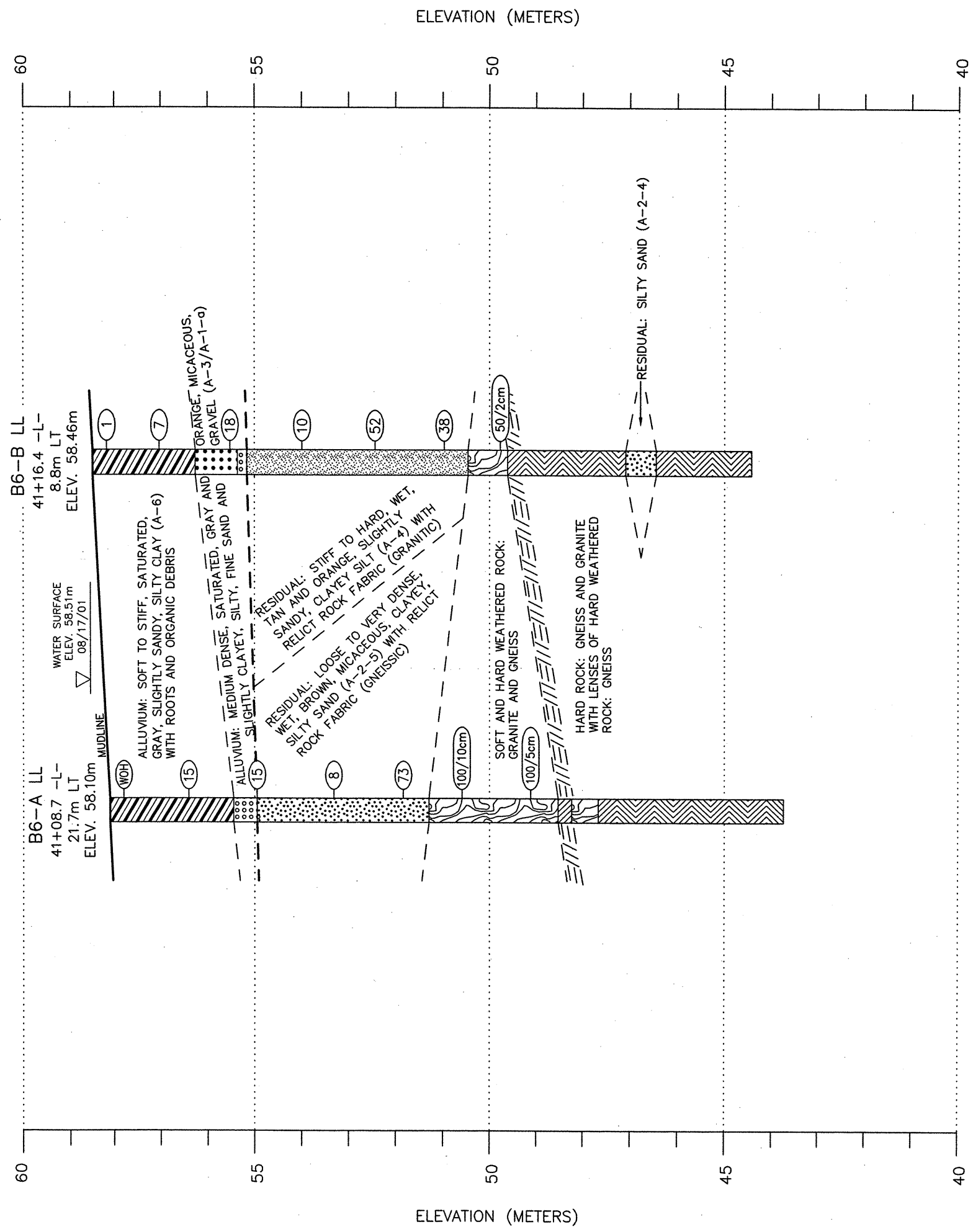


⊕



SHEET NO.	TOTAL SHEETS
16	107



CROSS SECTION ALONG LEFT LANE BENT 6
SITE 1: DUAL STRUCTURES ON CLAYTON BYPASS (-L-) OVER
WHITE OAK CREEK (AUSTIN POND)
NCDOT PROJECT No. 8.T311002 (R-2552AB)
F.A. PROJECT No. NHF-60-1(9)
JOHNSTON COUNTY, NORTH CAROLINA

MACTEC ENGINEERING & CONSULTING, INC. RALEIGH, NORTH CAROLINA	
REVISIONS	
DRAWN: R.R.	DATE: 09/15/03
DFT CHECK: M.B.L.	JOB: 6468-03-0376
GEOL CHECK: W.B.D.	DWG: 11