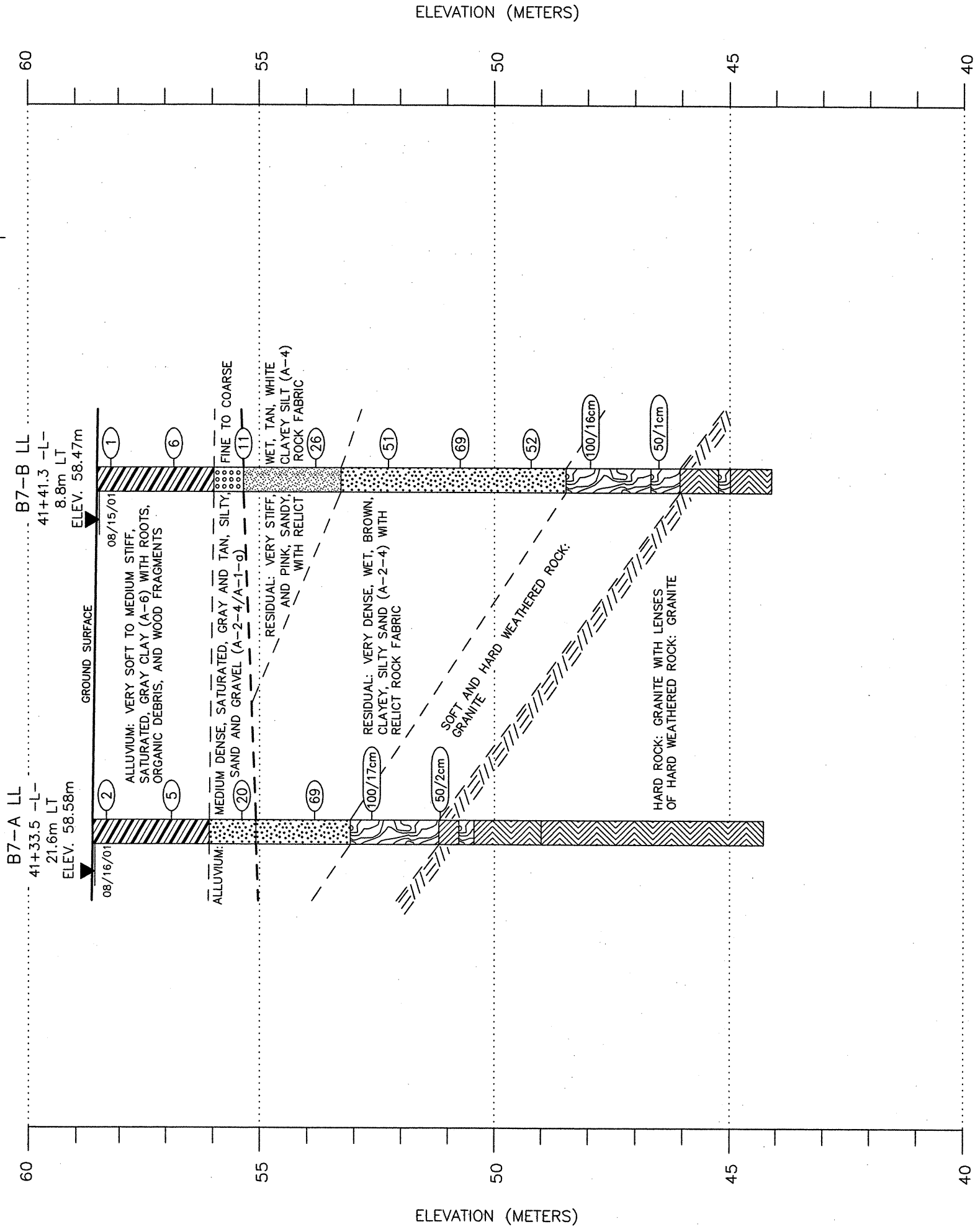


⊕



CROSS SECTION ALONG LEFT LANE BENT 7  
SITE 1: DUAL STRUCTURES ON CLAYTON BYPASS (-L-) OVER  
WHITE OAK CREEK (AUSTIN POND)  
NCDOT PROJECT No. 8.T311002 (R-2552AB)  
F.A. PROJECT No. NHF-60-1(9)  
JOHNSTON COUNTY, NORTH CAROLINA

SHEET NO.		TOTAL SHEETS	
17		107	

MACTEC ENGINEERING & CONSULTING, INC.			
RALEIGH, NORTH CAROLINA			
REVISIONS	DRAWN:	R.R.	DATE:
			09/15/03
	DFT CHECK:	M.B.L.	JOB: 6468-03-0376
	GEOL CHECK:	W.B.D.	DWG: 12