

39+40.0 39+50.0 39+60.0 39+70.0 39+80.0 39+90.0 40+00.0

SHEET NO.	TOTAL SHEETS
20	107

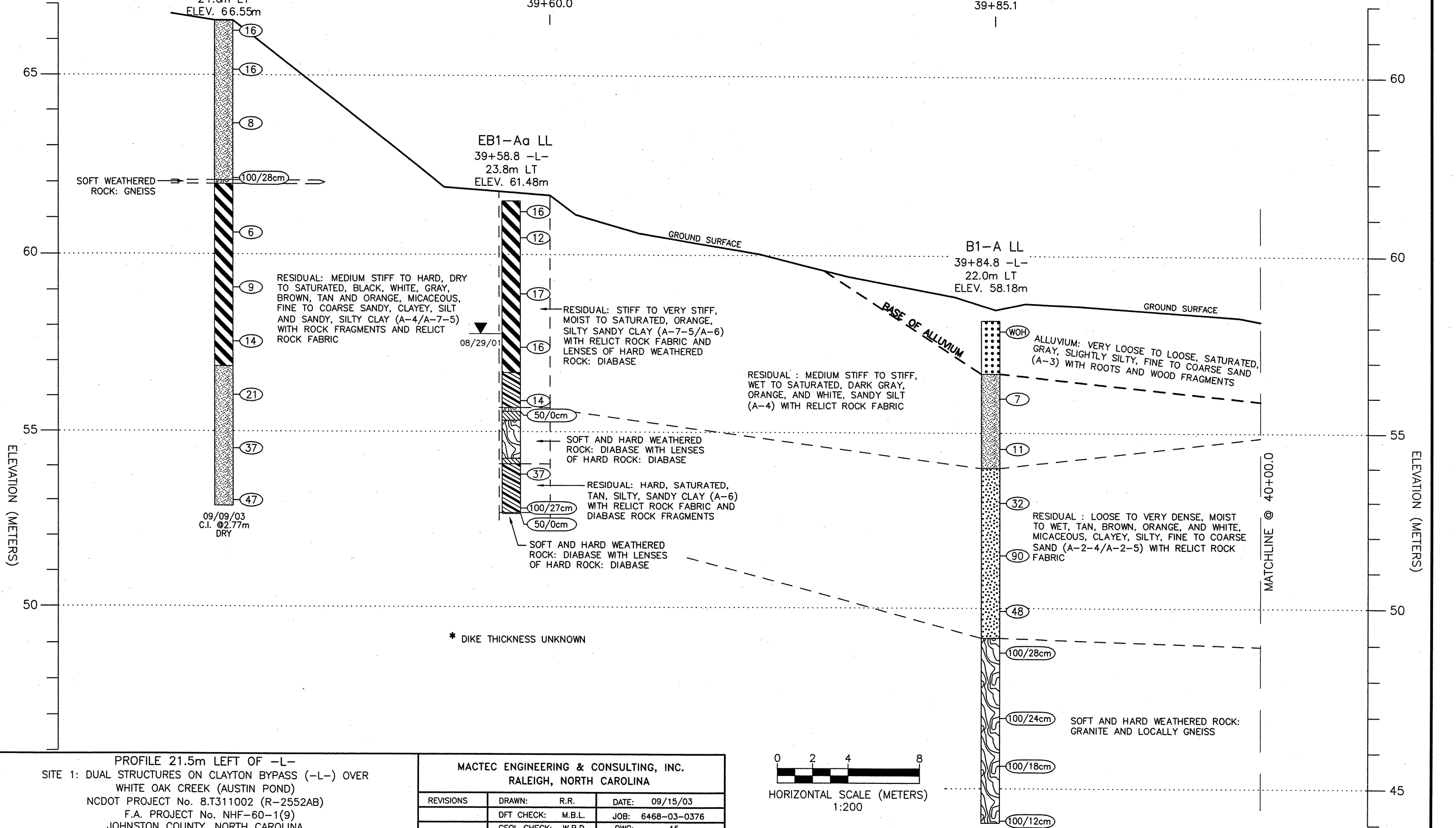
END BENT 1 REV
39+41.6
EB1-A LL REV
39+41.6 -L-
21.6m LT
ELEV. 66.55m

END BENT 1
39+60.0

BENT 1
39+85.1

EB1-Aa LL
39+58.8 -L-
23.8m LT
ELEV. 61.48m

B1-A LL
39+84.8 -L-
22.0m LT
ELEV. 58.18m



ELEVATION (METERS)

ELEVATION (METERS)

MATCHLINE @ 40+00.0

PROFILE 21.5m LEFT OF -L-
SITE 1: DUAL STRUCTURES ON CLAYTON BYPASS (-L-) OVER
WHITE OAK CREEK (AUSTIN POND)
NCDOT PROJECT No. 8.T311002 (R-2552AB)
F.A. PROJECT No. NHF-60-1(9)
JOHNSTON COUNTY, NORTH CAROLINA

MACTEC ENGINEERING & CONSULTING, INC. RALEIGH, NORTH CAROLINA			
REVISIONS	DRAWN: R.R.	DATE: 09/15/03	
	DFT CHECK: M.B.L.	JOB: 6468-03-0376	
	GEOL CHECK: W.B.D.	DWG: 15	

