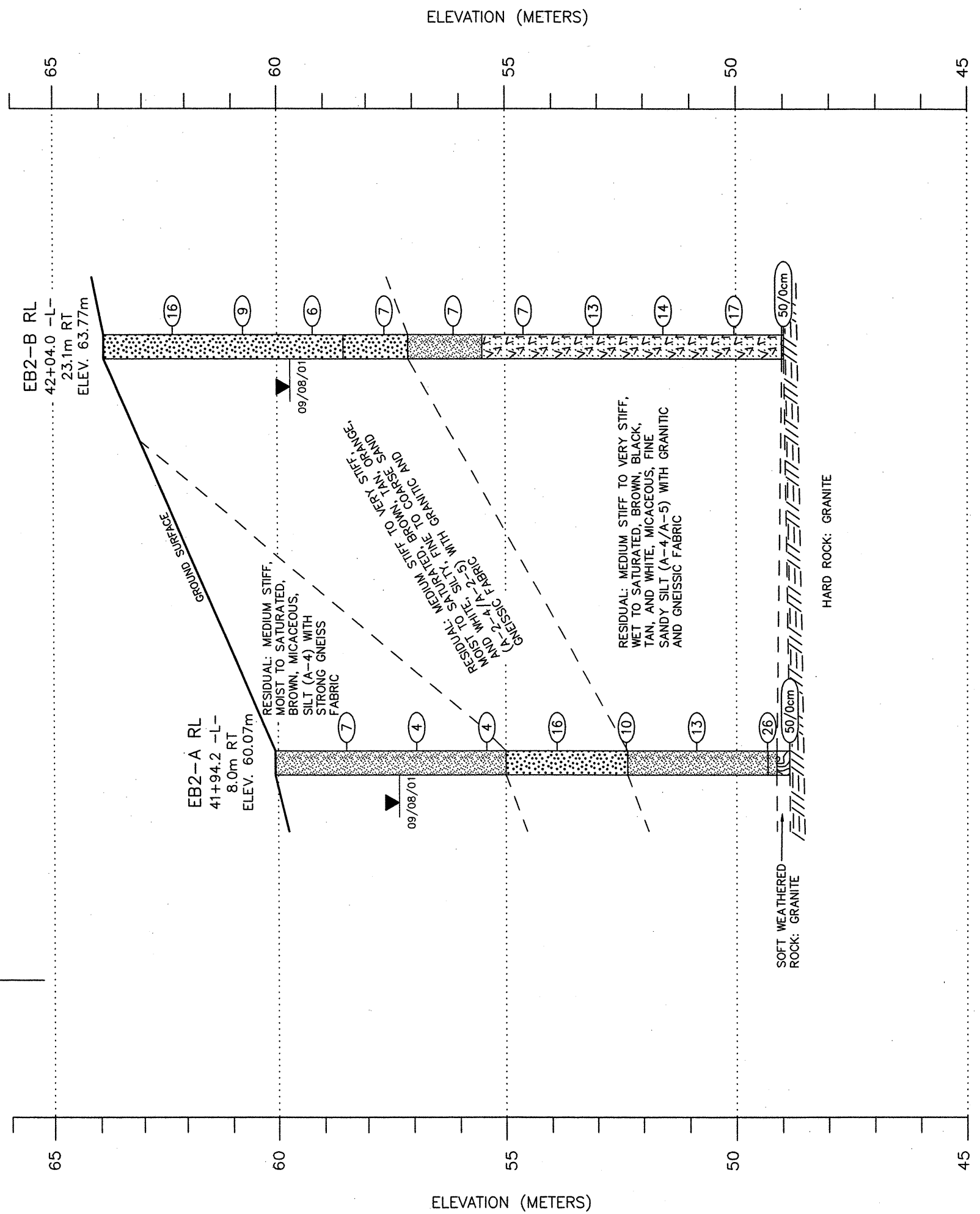
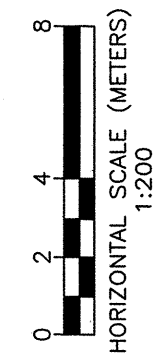


Q



SHEET NO.	TOTAL SHEETS
65	107



CROSS SECTION ALONG RIGHT LANE END BENT 2
 SITE 1: DUAL STRUCTURES ON CLAYTON BYPASS (-L-) OVER
 WHITE OAK CREEK (AUSTIN POND)
 NCDOT PROJECT No. 8.T311002 (R-2552AB)
 F.A. PROJECT No. NHF-60-1(9)
 JOHNSTON COUNTY, NORTH CAROLINA

MACTEC ENGINEERING & CONSULTING, INC.
 RALEIGH, NORTH CAROLINA

REVISIONS	DRAWN:	R.R.	DATE:
	DFT CHECK:	M.B.L.	09/15/03
	GEOL CHECK:	W.B.D.	JOB: 6468-03-0376
			DWG: 28