

**GENERAL NOTES:**

1. THE SHUTDOWN OF WATER MAINS OR SANITARY SEWER FORCE MAINS FOR RELOCATION SHALL BE COORDINATED WITH JOHNSTON COUNTY.
2. ALL WATER LINES AND ALL SANITARY SEWER FACILITIES ARE OWNED BY JOHNSTON COUNTY
2. THE CONTRACTOR SHALL ROTATE BENDS AS NECESSARY TO PROVIDE FOR VERTICAL ALIGNMENT. ALL FITTINGS SHALL BE MECHANICAL JOINT.
3. THE CONTRACTOR SHALL DETERMINE THE ACTUAL LENGTH OF PIPE TO BE RESTRAINED FOR ALL TIE-IN SECTIONS.
4. ALL CONNECTIONS SHALL BE MADE USING NECESSARY FITTINGS. THESE FITTINGS ARE AWWA C110 OR C153 PAID BY C110 WEIGHT IN KILOGRAMS.
5. ALL EXISTING 300MM AND 400MM DI PIPE TO BE REMOVED SHALL BE DELIVERED TO JOHNSTON COUNTY WATER PLANT, 600 CLEARWATER DRIVE, SMITHFIELD, NORTH CAROLINA

**ALL WATER AND SEWER LINES OWNED BY JOHNSTON COUNTY**

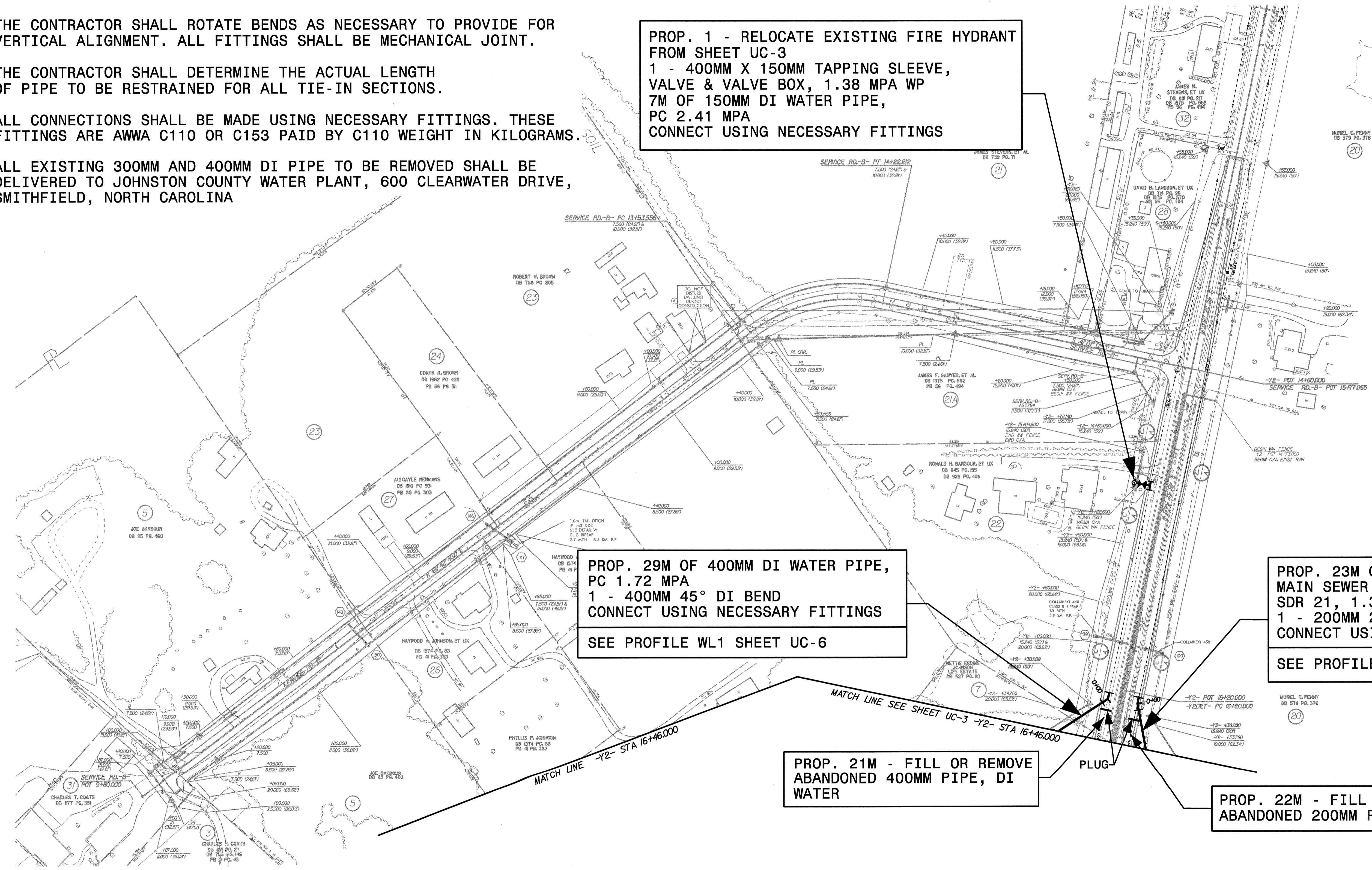
**PROP. 1 - RELOCATE EXISTING FIRE HYDRANT FROM SHEET UC-3**  
 1 - 400MM X 150MM TAPPING SLEEVE, VALVE & VALVE BOX, 1.38 MPA WP  
 7M OF 150MM DI WATER PIPE, PC 2.41 MPA  
 CONNECT USING NECESSARY FITTINGS

**PROP. 29M OF 400MM DI WATER PIPE, PC 1.72 MPA**  
 1 - 400MM 45° DI BEND  
 CONNECT USING NECESSARY FITTINGS  
 SEE PROFILE WL1 SHEET UC-6

**PROP. 23M OF 200MM PVC FORCE MAIN SEWER PIPE, SDR 21, 1.38 MPA WP**  
 1 - 200MM 22 1/2° DI BEND  
 CONNECT USING NECESSARY FITTINGS  
 SEE PROFILE FM1 SHEET UC-7

**PROP. 21M - FILL OR REMOVE ABANDONED 400MM PIPE, DI WATER**

**PROP. 22M - FILL OR REMOVE ABANDONED 200MM PIPE, PVC FORCE MAIN**



0:\7987\Nc-2552ab\Nc-2552ab\UC-2\2552abuc2.dwg  
 03/27/2005 09:51:13 PM