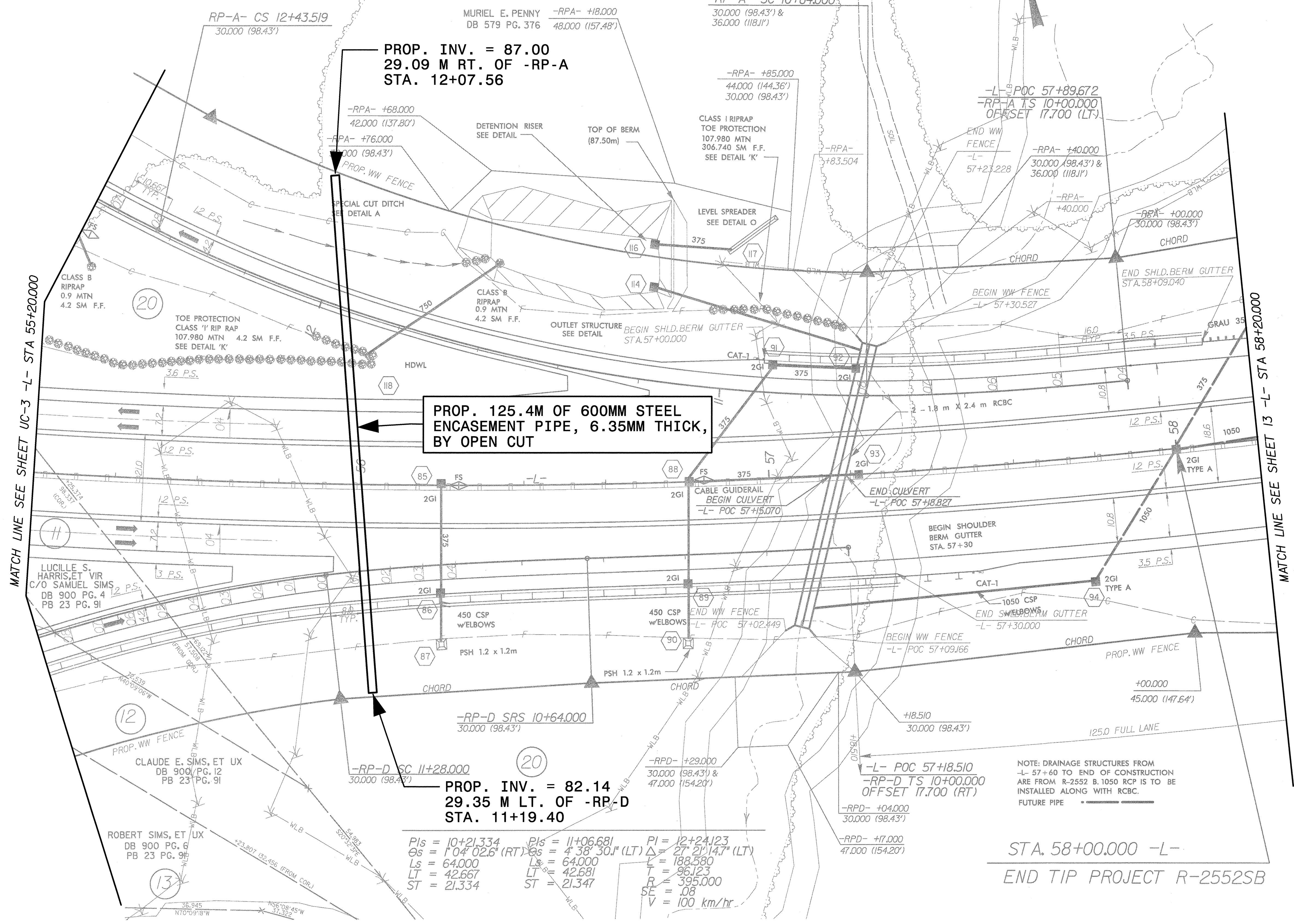


UTILITY CONSTRUCTION

<p>-RP-A</p> <p>PIs = 10+38.594 R 1 = 1682.500 θs 1 = 1°05'20.3" (RT) R 2 = 400.000 θs 2 = 4°35'04.4" (RT) Ls = 64.000 LT = 38.594 ST = 25.455</p>	<p>PI = 11+55.297 Δ = 25°42'50.9" (RT) L = 179.519 T = 91.297 R = 400.000 SE = .08 V = 100 km/hr</p>	<p>PIs = 12+64.865 θs = 4°35'01.2" (RT) Ls = 64.000 LT = 42.681 ST = 21.346</p>	<p>PIs = 54+26.592 θs = 1°36'03.3" (LT) Ls = 95.000 LT = 63.336 ST = 31.669</p>	<p>-L-</p> <p>PI = 57+45.284 Δ = 19°10'00.7" (LT) L = 568.692 T = 287.028 R = 1,700.000 SE = .04 V_{DES.} = 110 km/hr</p>	<p>PIs = 60+58.617 θs = 1°36'03.3" (LT) Ls = 95.000 LT = 63.336 ST = 31.669</p>
--	--	---	---	---	---



MATCH LINE SEE SHEET UC-3 -L- STA 55+20.000

MATCH LINE SEE SHEET 13 -L- STA 58+20.000

NOTE: DRAINAGE STRUCTURES FROM -L- 57+60 TO END OF CONSTRUCTION ARE FROM R-2552 B. 1050 RCP IS TO BE INSTALLED ALONG WITH RCBC. FUTURE PIPE

STA. 58+00.000 -L-
END TIP PROJECT R-2552SB

6/17/2005 11:28:24 AM \\V:\2552\UC5.dwg