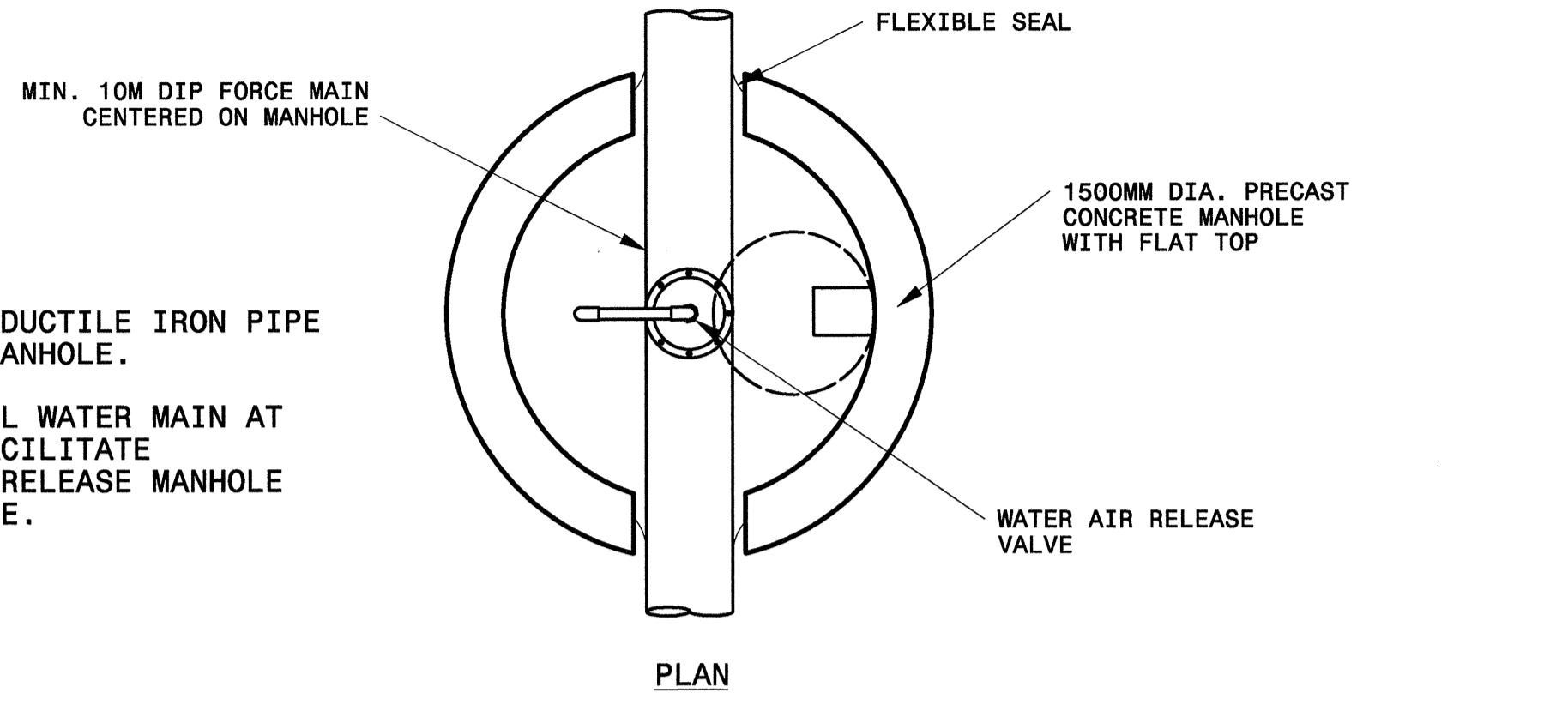
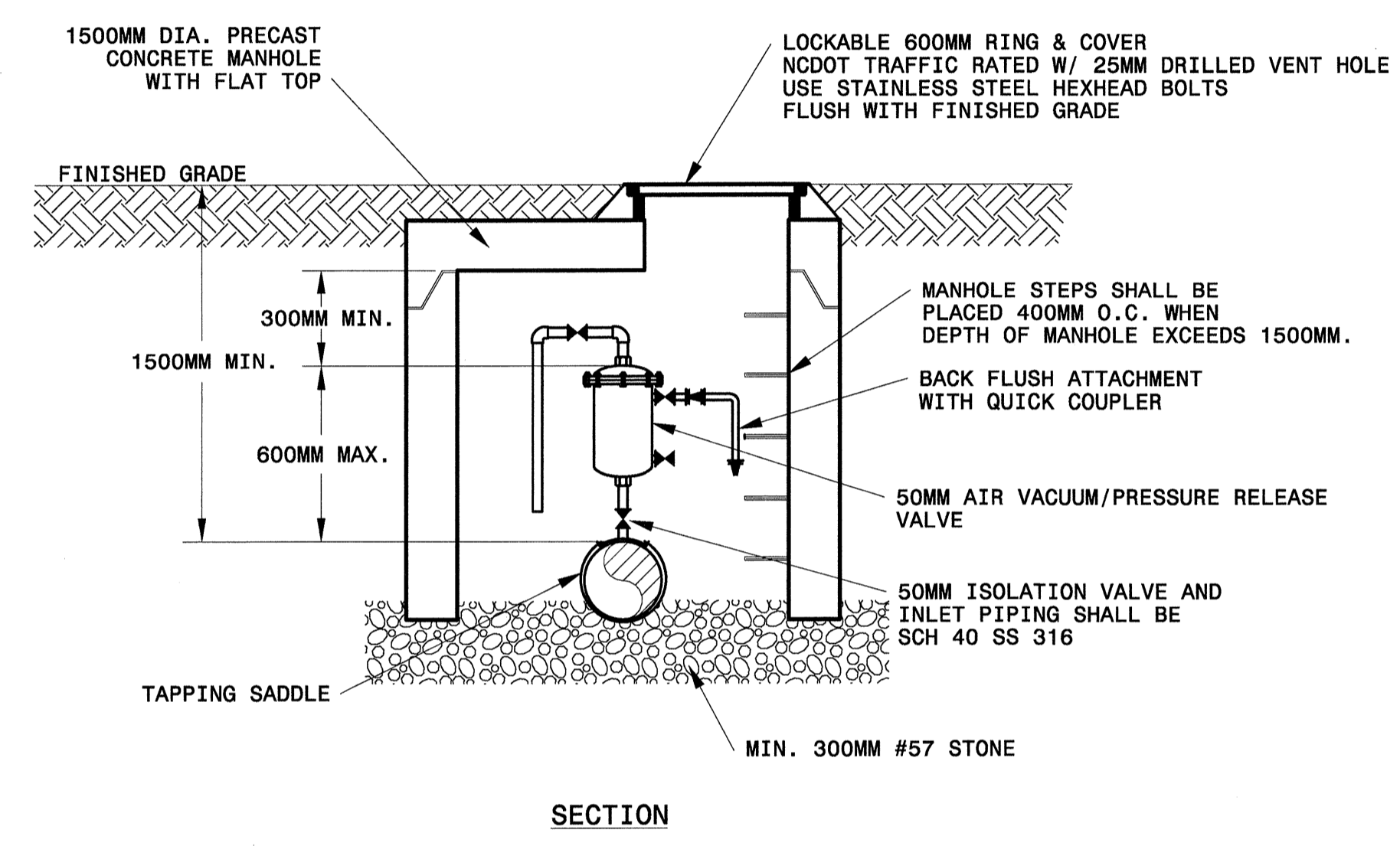


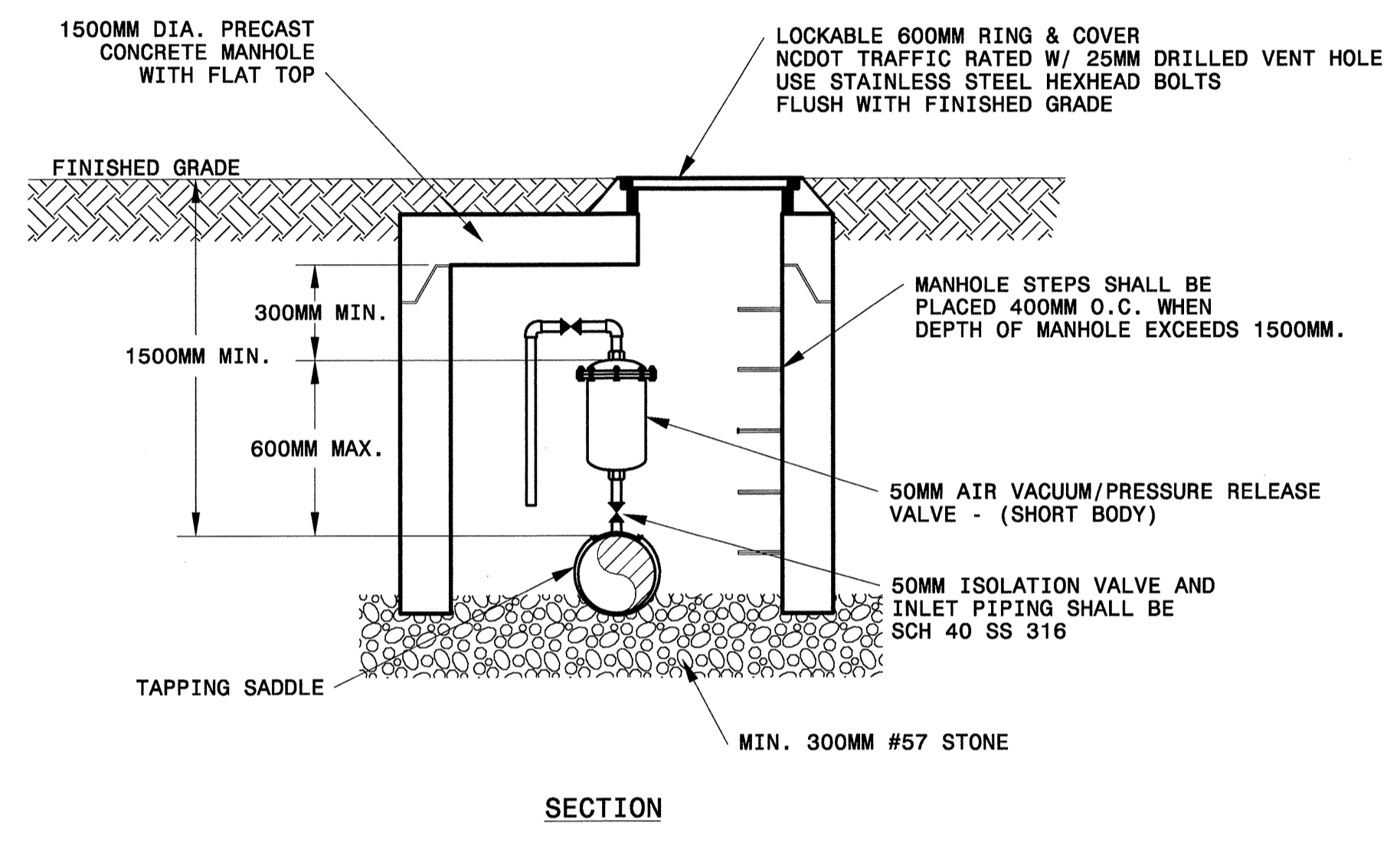
- NOTES:
1. FORCE MAIN SHALL BE DUCTILE IRON PIPE 3M CENTERED ACROSS MANHOLE.
 2. CONTRACTOR TO INSTALL FORCE MAIN AT DEPTH REQUIRED TO FACILITATE INSTALLATION OF AIR RELEASE MANHOLE AT HIGH POINT OF LINE.



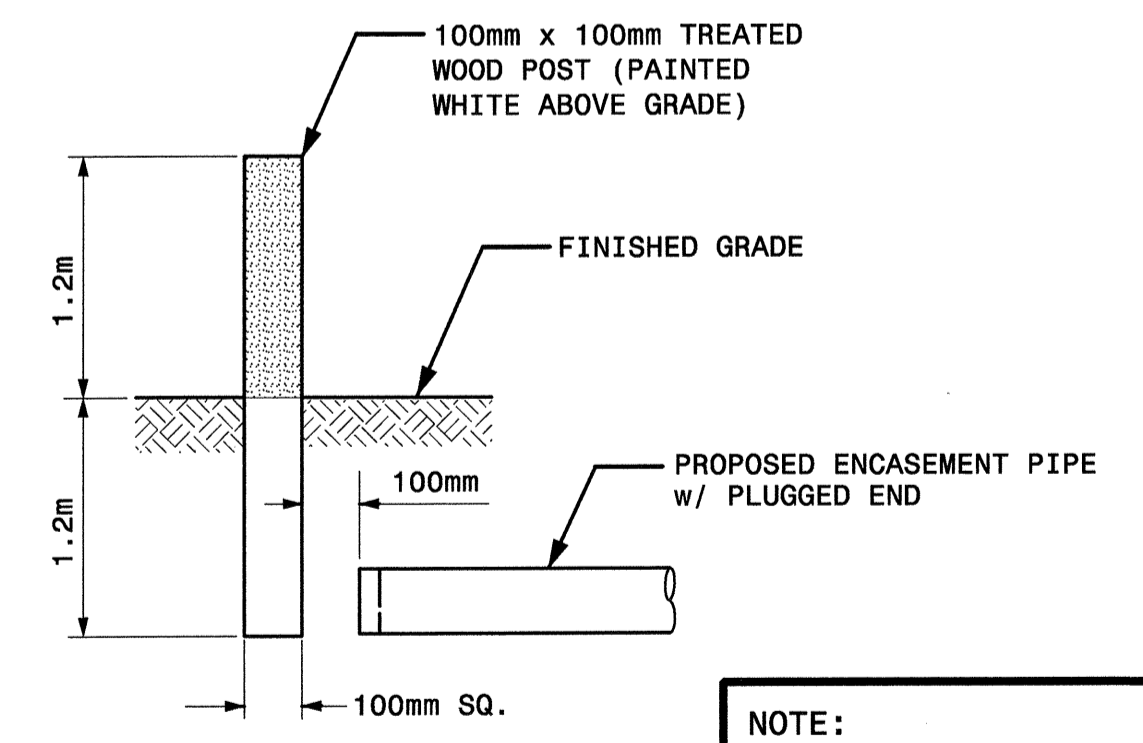
- NOTES:
1. WATER MAIN SHALL BE DUCTILE IRON PIPE 3M CENTERED ACROSS MANHOLE.
 2. CONTRACTOR TO INSTALL WATER MAIN AT DEPTH REQUIRED TO FACILITATE INSTALLATION OF AIR RELEASE MANHOLE AT HIGH POINT OF LINE.



AIR VACUUM/RELEASE MANHOLE FOR FORCE MAIN



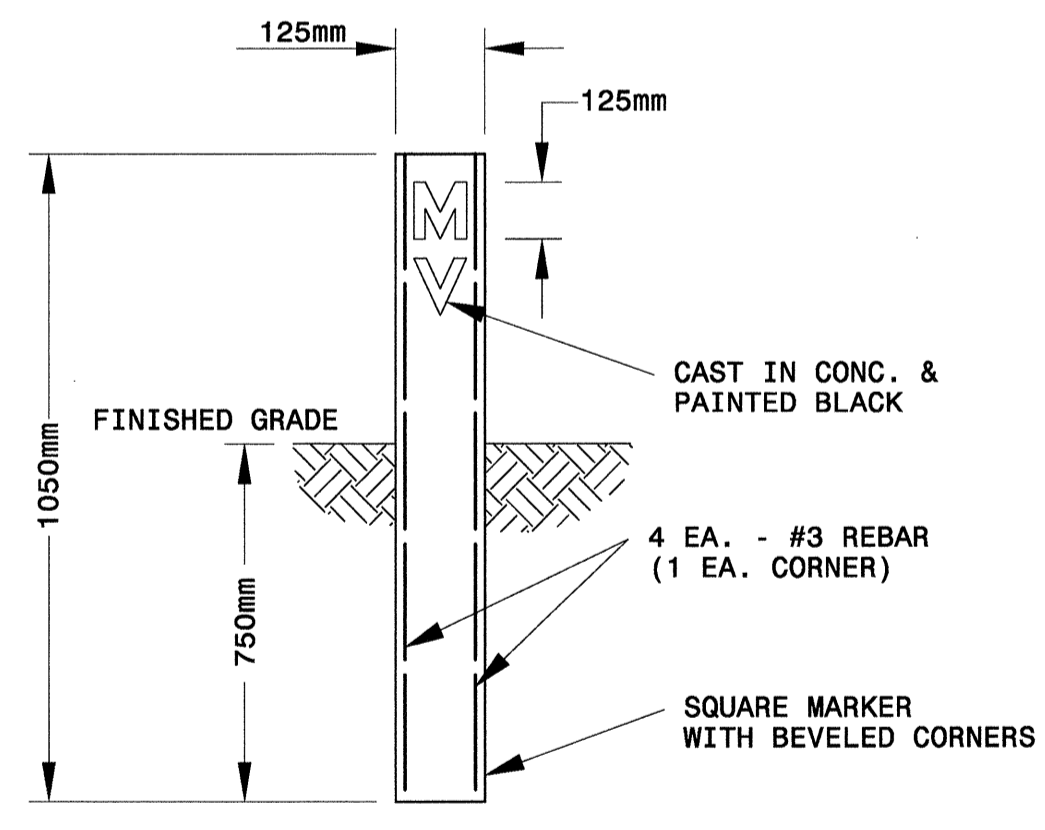
STANDARD AIR RELEASE MANHOLE FOR WATER MAIN



NOTE:
STUB-OUT MARKERS TO BE LOCATED 100MM FROM THE END OF THE PROPOSED ENCASUREMENT PIPE.

NOTE:
END MARKER SHALL BE CONSIDERED INCIDENTAL TO THE COST OF THE PROPOSED ENCASUREMENT PIPE.

ENCASEMENT PIPE END MARKER DETAIL



VALVE MARKER DETAIL

- NOTES:
1. VALVE MARKERS SHALL BE PLACED AT R/W.
 2. LETTERS "MV" SHALL FACE TOWARDS VALVE.
 3. MARKER SHALL HAVE BRASS OR BRONZE EMBED ON TOP OR SIDE.
 4. CONTRACTOR SHALL STAMP DISTANCE TO CENTER OF VALVE INTO EMBED.
 5. BLOW-OFF ASSEMBLY SHALL INCLUDE 1 EA. MARKER W/ "BO" OR "MV" CAST.

G:\7987\N.R.-2552AB\Proj\UC\N.R.2552AB\UC9.dgn 01/28/2005 03:31:15 PM