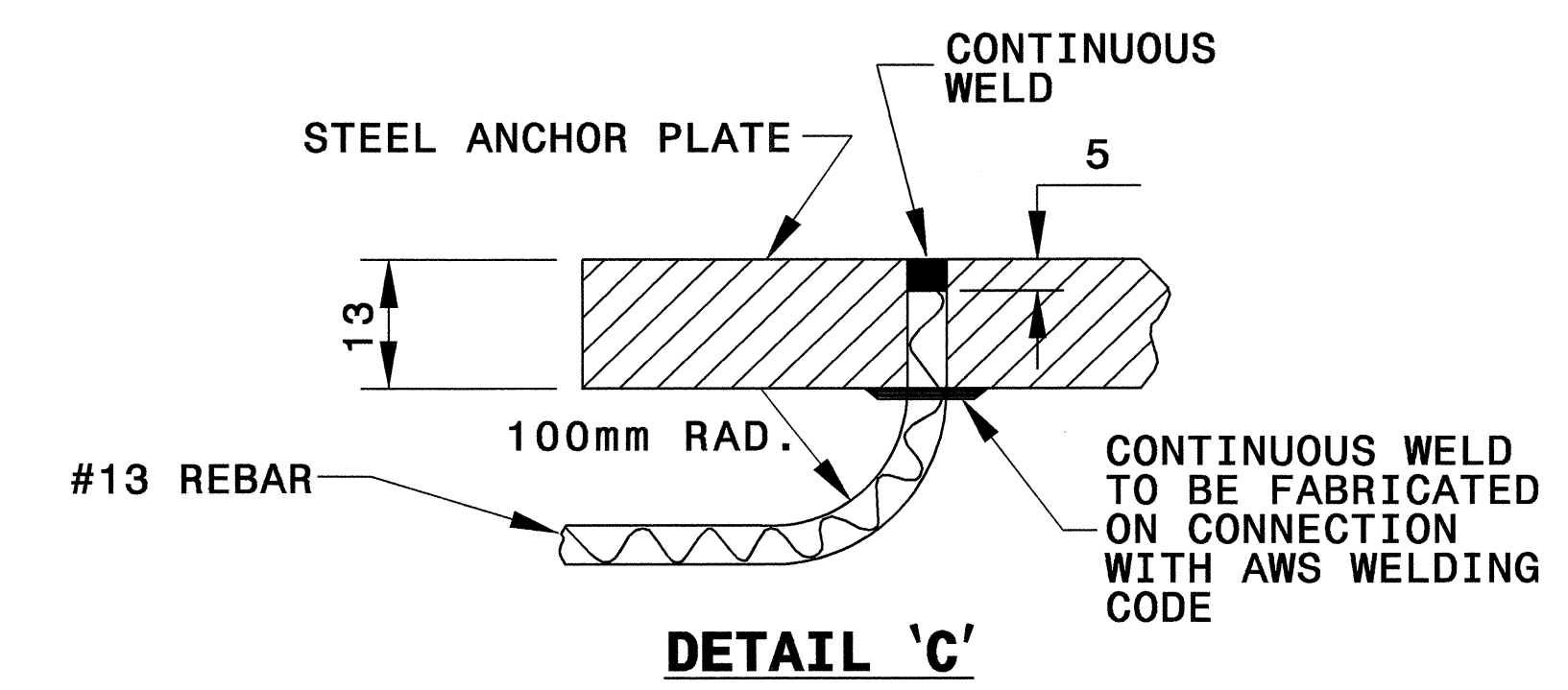
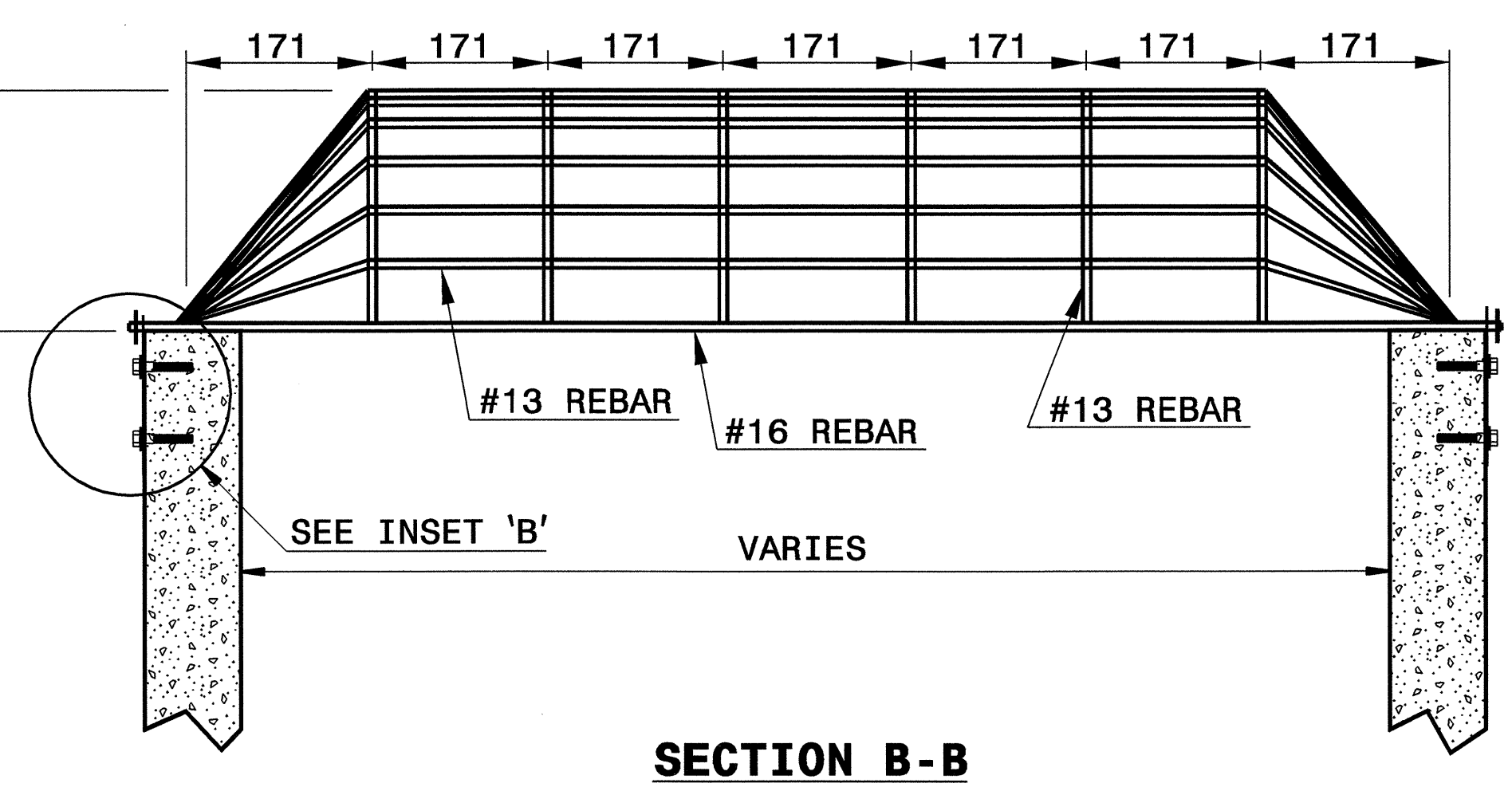
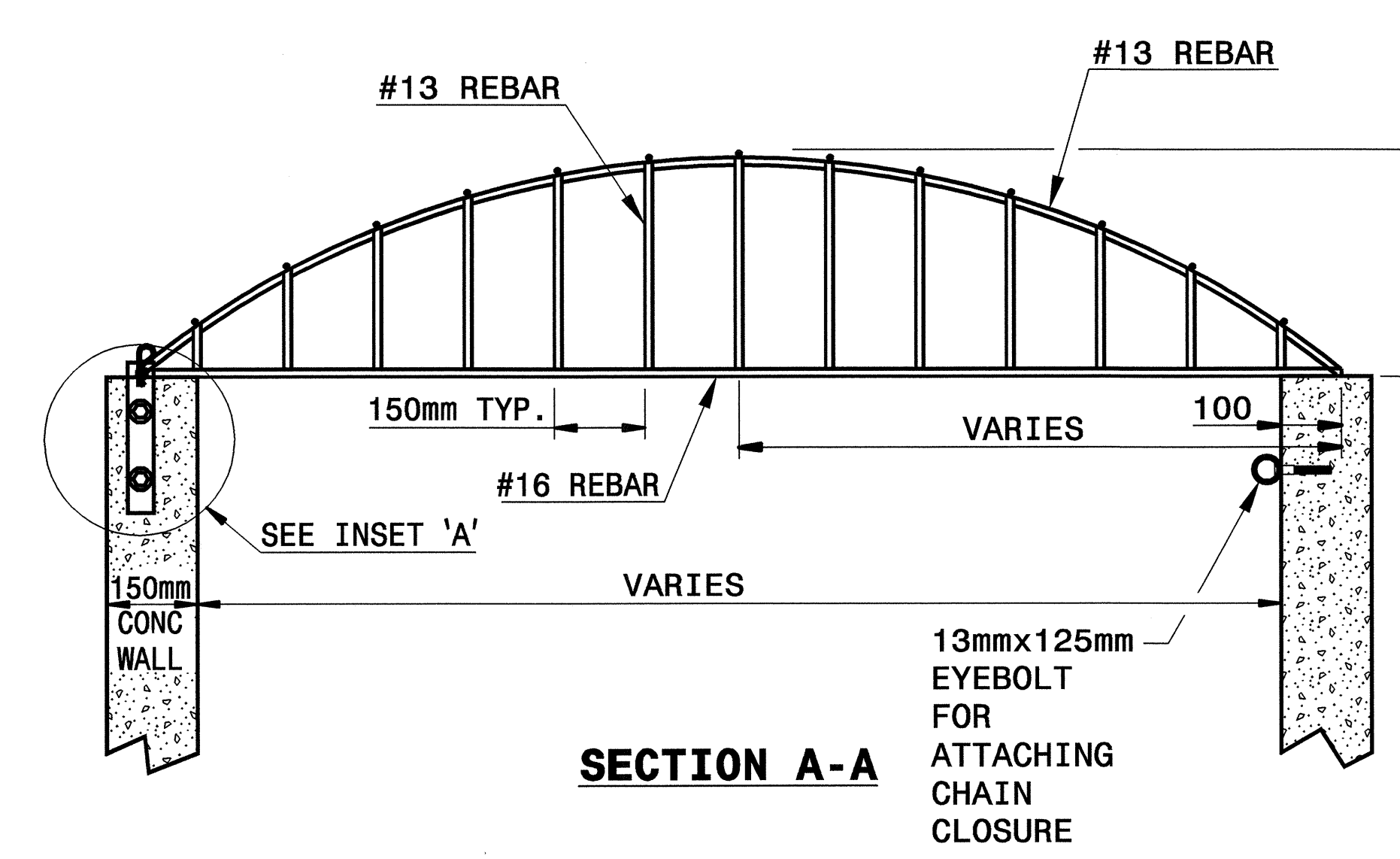
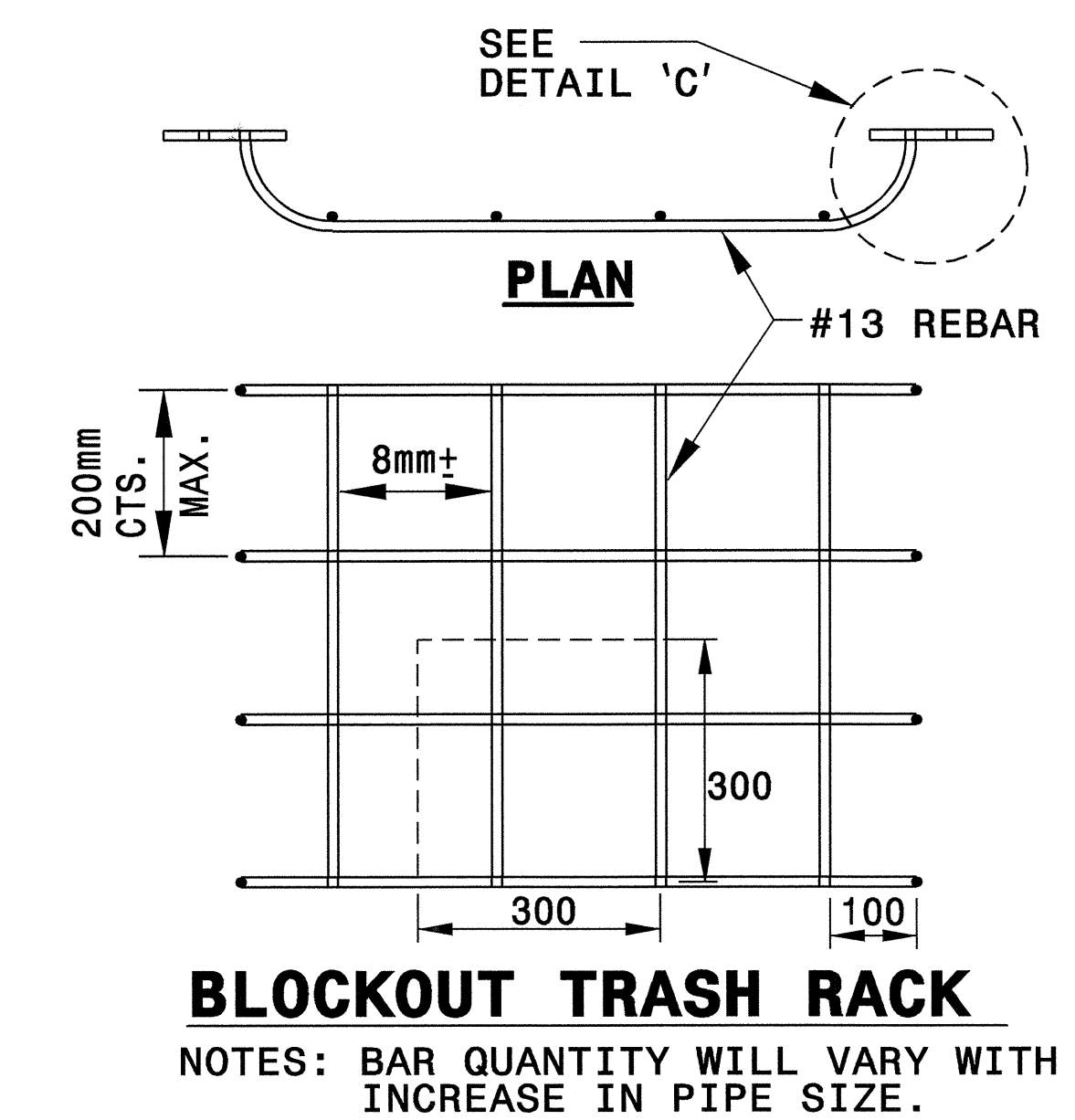
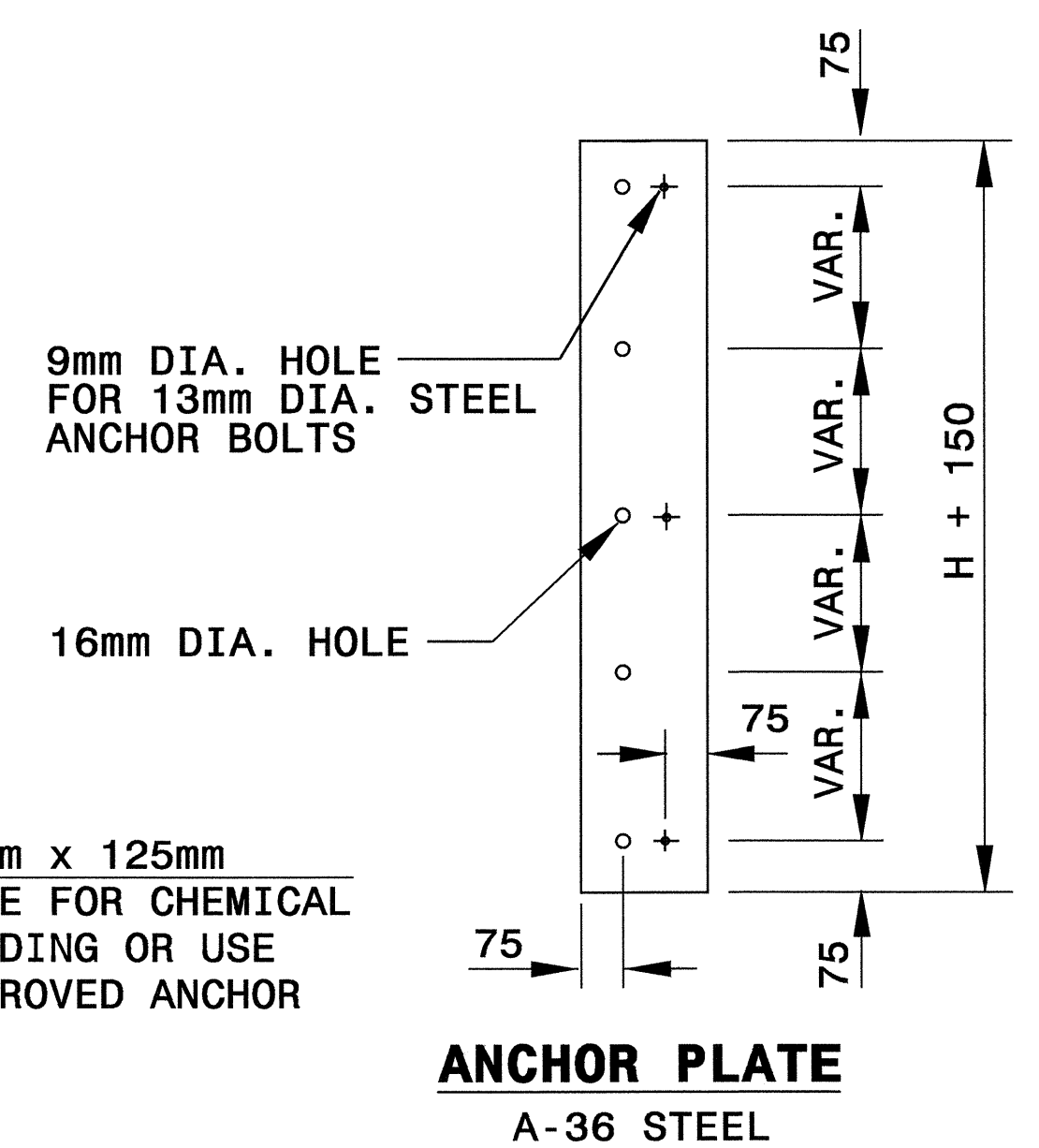
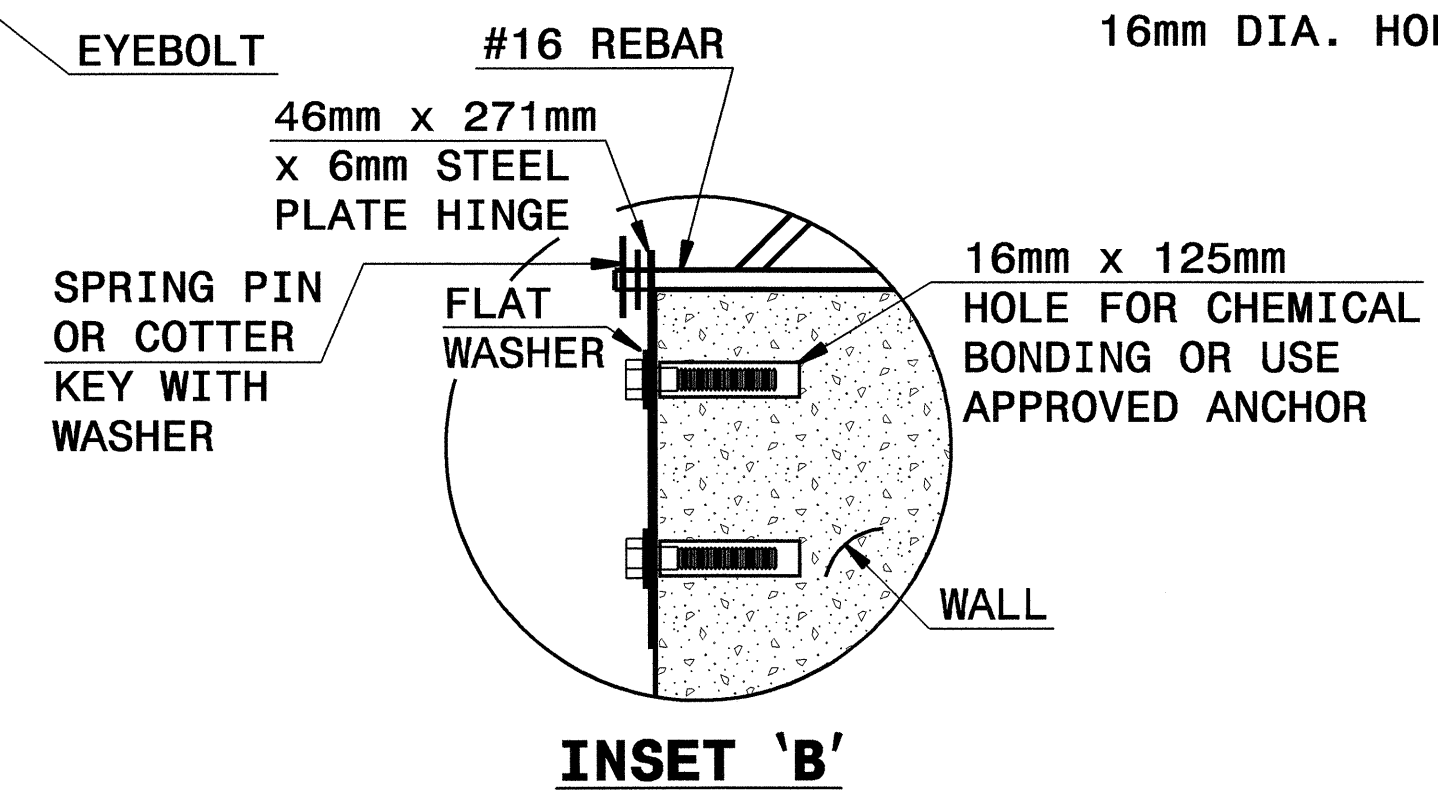
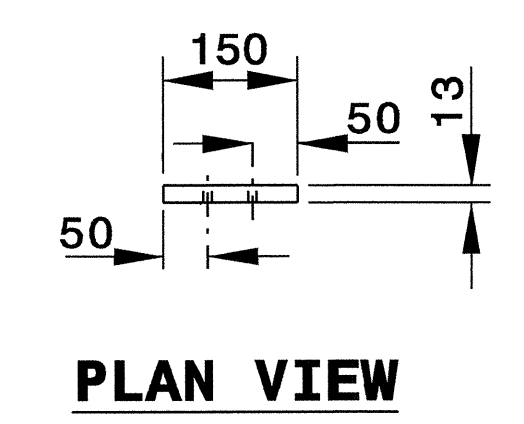
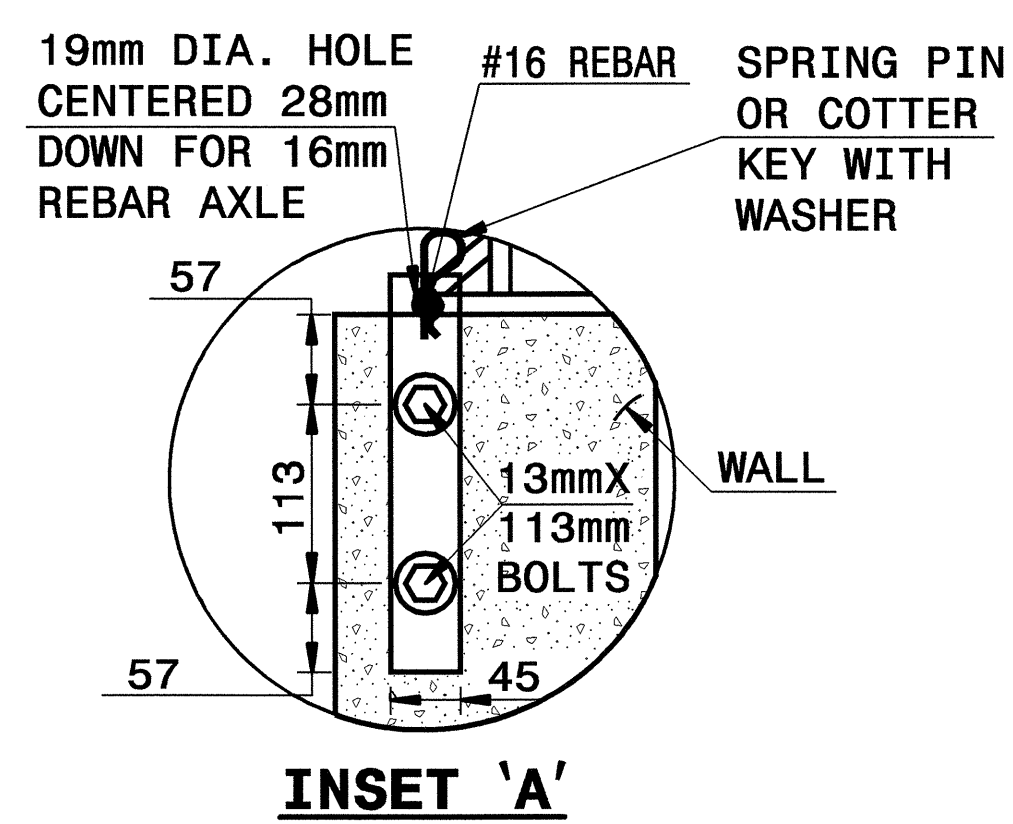
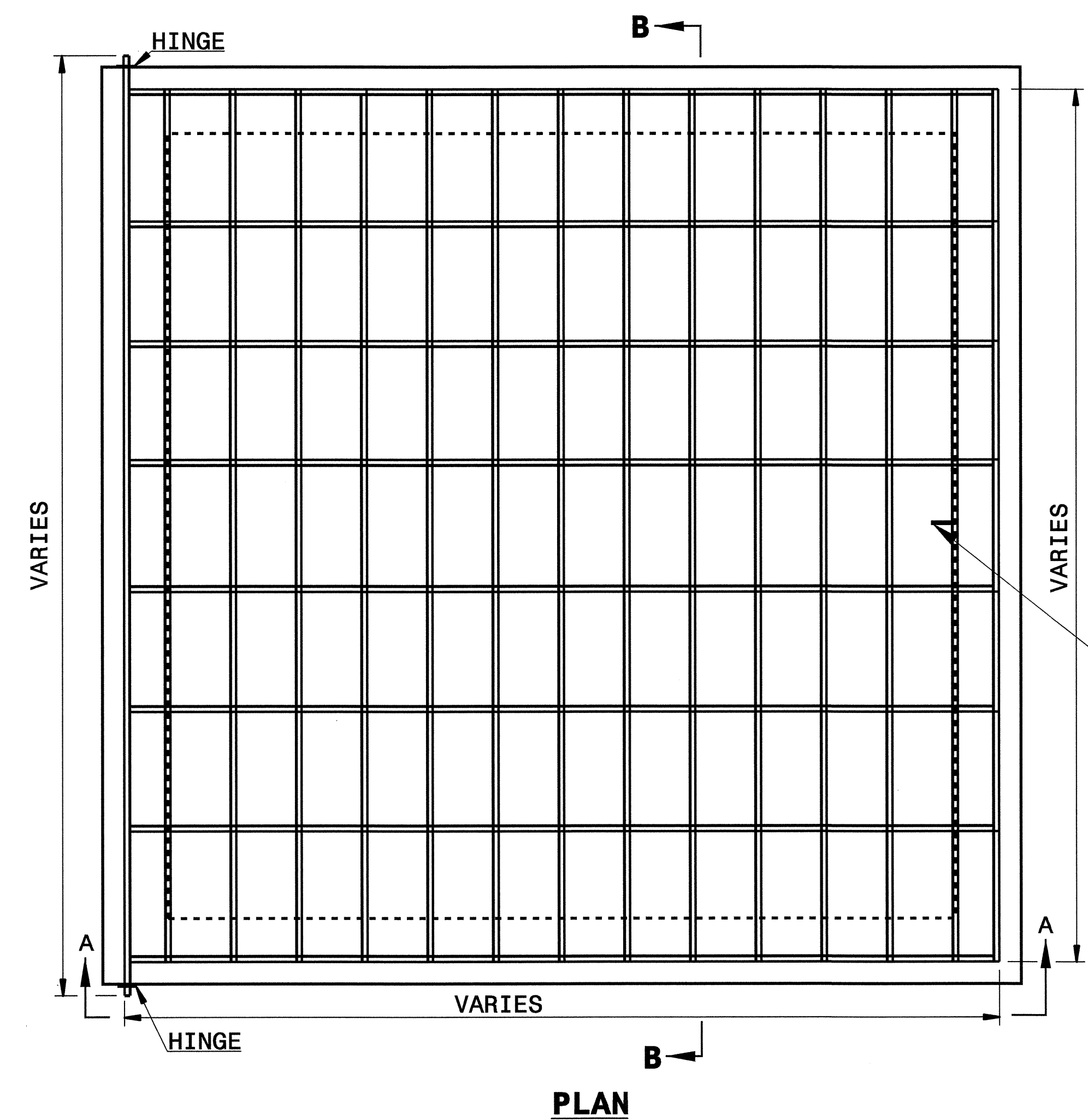
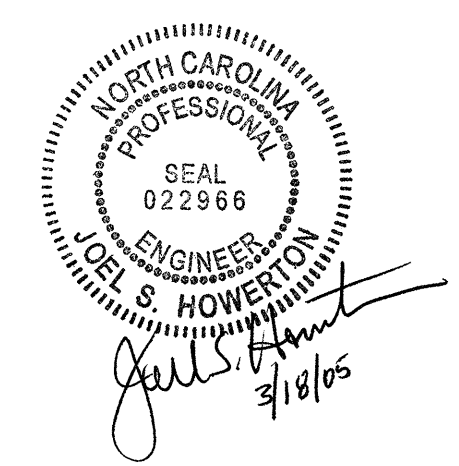




- GENERAL NOTES:
1. ALL REBAR JOINTS SHALL BE FULLY WELDED AROUND JOINT WITH A MINIMUM OF A 7mm BEAD.
 2. IF BOLTS ARE CHEMICALLY ANCHORED, FOLLOW STD. DWG. 862.04 FOR ANCHORING PROCEDURE.
 3. EYEBOLT FOR CHAIN CLOSURE SHALL BE INSTALLED BY THE SAME METHOD AS THE HINGE PLATE BOLTS.
 4. RACK AND HARDWARE SHALL BE GALVANIZED IN ACCORDANCE WITH ASTM 153.
 5. THIS DETAIL IS TO BE USED IN CONJUNCTION WITH A 1800mm x 1800mm CONCRETE FLASHBOARD RISER DETAIL.



REBAR TRASH RACK



**PROJECT SERVICES UNIT
STANDARDS AND SPECIAL DESIGN**
Office 919-250-4128 FAX 919-250-4119

**DETAIL OF
REBAR TRASH RACK
& BLOCKOUT TRASH RACK**

ORIGINAL BY: L. Robinson DATE: 1995
 MODIFIED BY: E.E. Ward & T.S.S. DATE: 11-18-04
 CHECKED BY: [Signature] DATE: 1/7/05
 FILE SPEC.: \\usr\details\stand\flashboard2_r2552.dgn

06-JAN-2005 16:19
 W:\Special_Details\viewward\usr\details\stand\riser_r2552.dgn
 .type11 AT P30203655