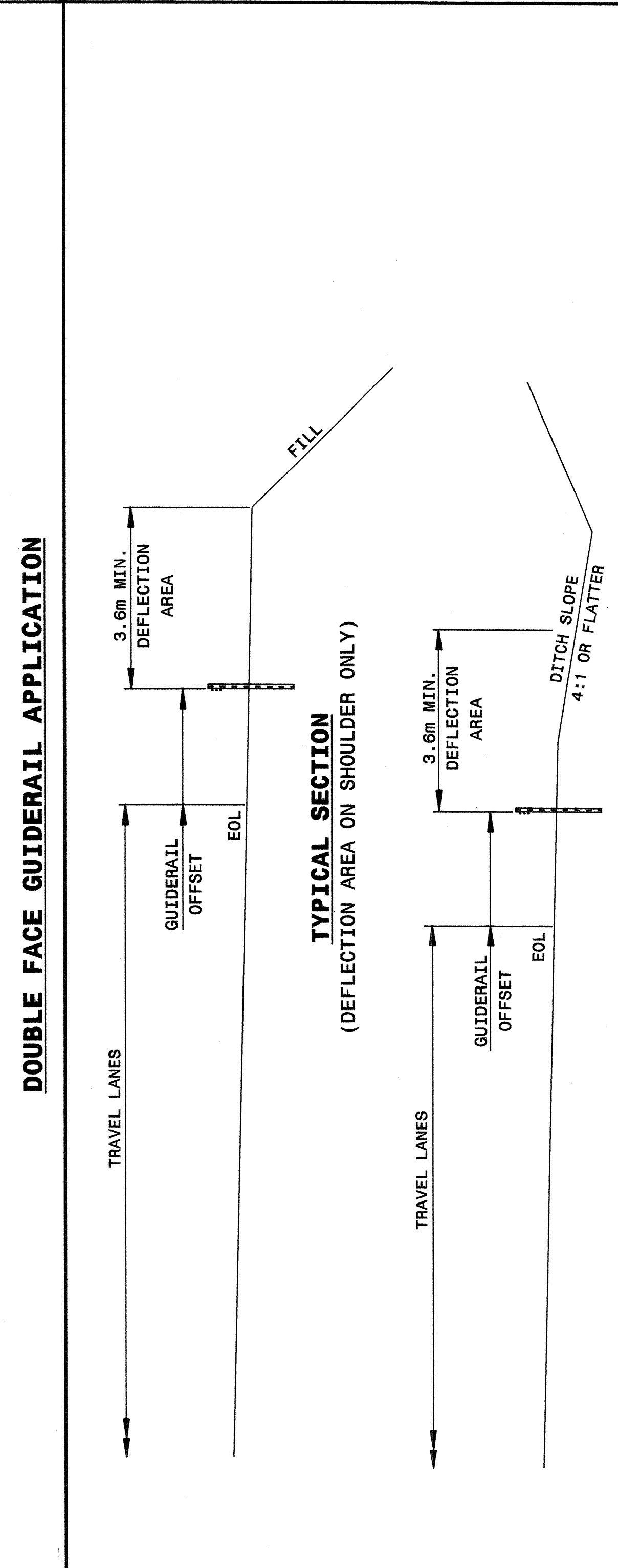
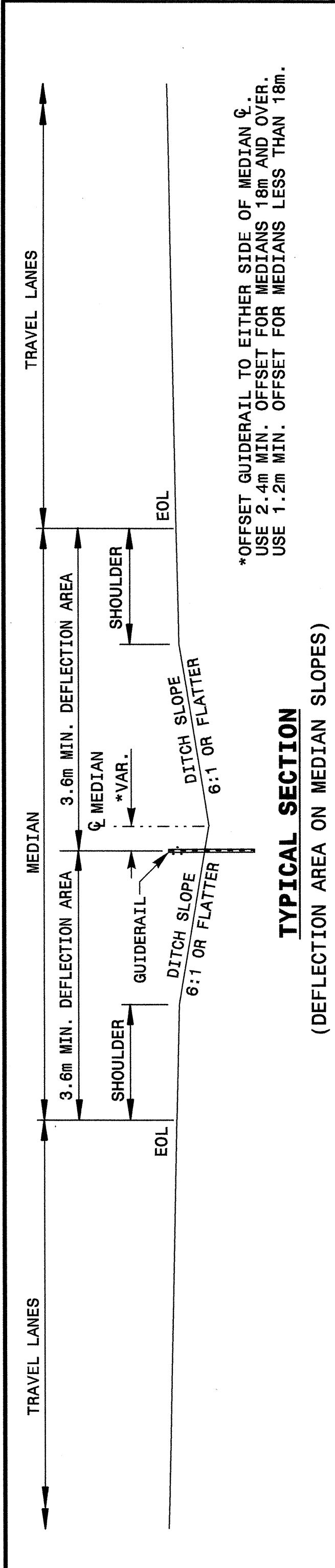




STATE OF NORTH CAROLINA  
DEPT. OF TRANSPORTATION  
DIVISION OF HIGHWAYS  
RALEIGH, N.C.

METRIC DETAIL DRAWING FOR  
**CABLE GUIDERAIL**  
DESIGN AND PLACEMENT

SHEET 3 OF 11  
**865D01**



Note: This drawing is dimensioned in millimeters unless otherwise depicted within the drawing.

STATE OF NORTH CAROLINA  
DEPT. OF TRANSPORTATION  
DIVISION OF HIGHWAYS  
RALEIGH, N.C.

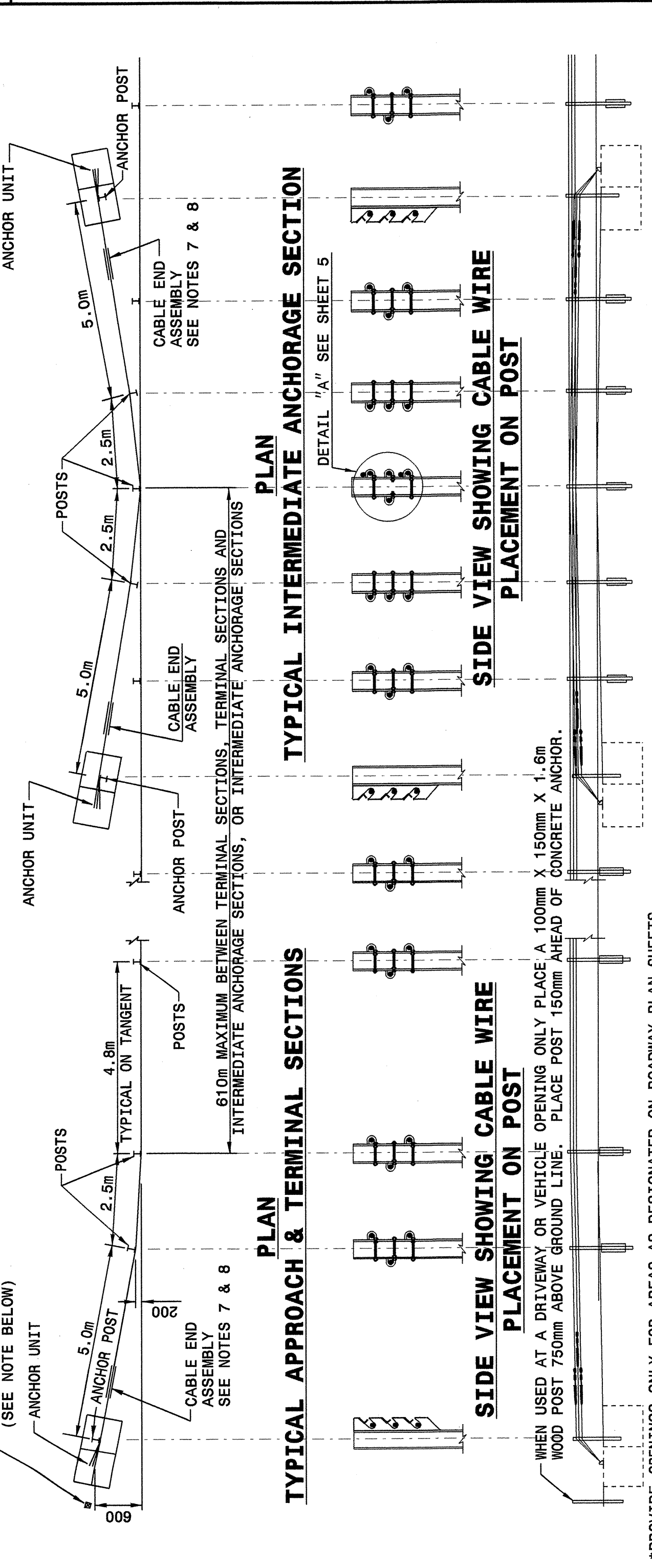
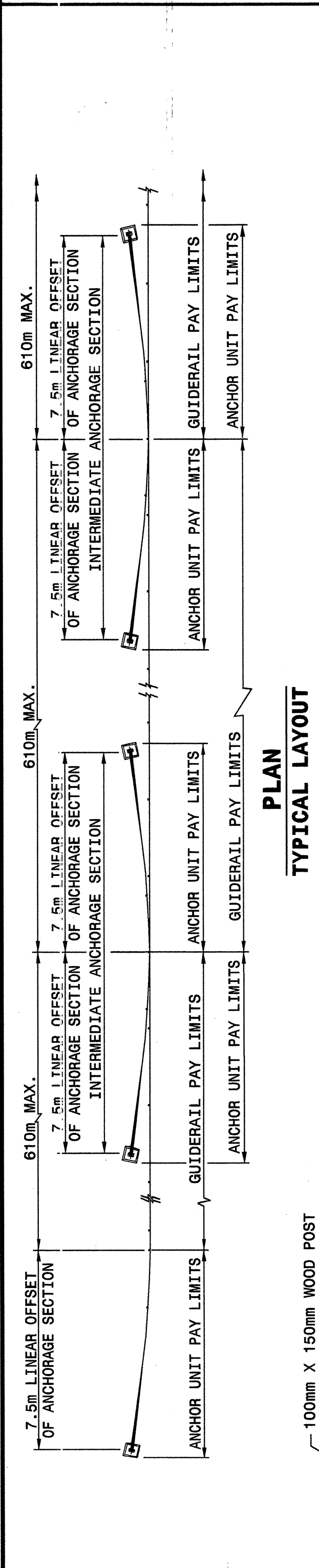
METRIC DETAIL DRAWING FOR  
**CABLE GUIDERAIL**  
DESIGN AND PLACEMENT

SHEET 3 OF 11  
**865D01**

STATE OF NORTH CAROLINA  
DEPT. OF TRANSPORTATION  
DIVISION OF HIGHWAYS  
RALEIGH, N.C.

METRIC DETAIL DRAWING FOR  
**CABLE GUIDERAIL**  
GUIDERAIL LAYOUT

SHEET 4 OF 11  
**865D01**



Note: PROVIDE OPENINGS ONLY FOR AREAS AS DESIGNATED ON ROADWAY PLAN SHEETS.

Note: **TYPICAL APPROACH & TERMINAL SECTIONS**  
This drawing is dimensioned in millimeters unless otherwise depicted within the drawing.

STATE OF NORTH CAROLINA  
DEPT. OF TRANSPORTATION  
DIVISION OF HIGHWAYS  
RALEIGH, N.C.

METRIC DETAIL DRAWING FOR  
**CABLE GUIDERAIL**  
GUIDERAIL LAYOUT

SHEET 4 OF 11  
**865D01**



DESIGN SERVICES UNIT  
STANDARDS AND SPECIAL DESIGN  
Office 919-250-4128 FAX 919-250-4119

**SEE PLATE FOR TITLE**

ORIGINAL BY: 2002 STANDARDS DATE: 1-15-02  
MODIFIED BY: E.E. WARD DATE: 4-07-04  
CHECKED BY: C. O. WARD DATE: 4-16-04  
FILE SPEC.: /usr/std/02stds to details/metric/86501/0865d01.dgn

I:\APP\0004\0845\1\spec\ward\stds\02\stds to Special Details\metric\86501\0865d01.dgn