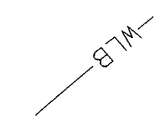
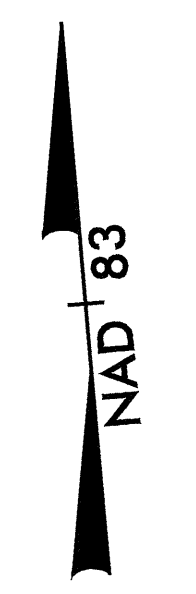


8/17/09



WILLIE C. REAMS  
DB 674 PG. 565



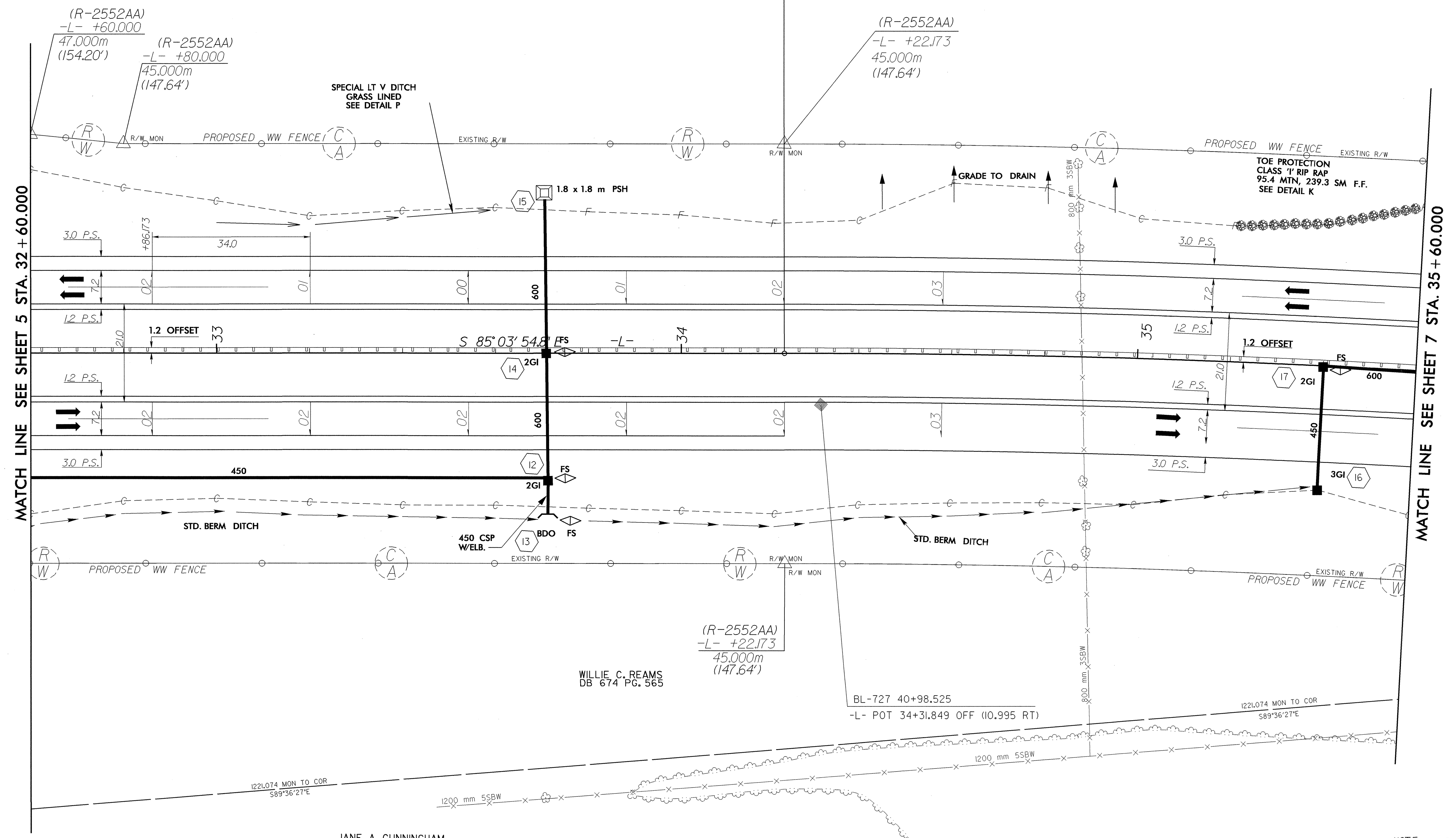
-L-  
PI = 38+81.623  
 $\Delta = 20^\circ 44' 47.5''$  (RT)  
L = 905.237  
T = 457.630  
R = 2,500.000  
SE = .03  
V<sub>DES.</sub> = 110 km/hr

**METRIC**

CONST. REV.  
R/W REV.

PROJECT REFERENCE NO.	SHEET NO.
R-2552AB	6
R/W SHEET NO.	R-2552AA *20 & *21
ROADWAY DESIGN ENGINEER	HYDRAULICS ENGINEER
 KEVIN E. MOORE 3/16/05	 J. A. CUNNINGHAM 3/16/05

EQUATION:  
-L- POT 34+22.173 BK =  
-L- PC 34+23.993 AH



MATCH LINE SEE SHEET 5 STA. 32 + 60.000

MATCH LINE SEE SHEET 7 STA. 35 + 60.000

WILLIE C. REAMS  
DB 674 PG. 565

JANE A. CUNNINGHAM  
DB 537 PG. 430

NOTE: SEE SHEETS 16 AND 17 FOR -L- PROFILE  
SEE SHEET 2-D FOR DRAINAGE DETAILS

REVISIONS

15 MAR 2009 15:43  
X:\proj\09\2460