

8/17/99

METRIC

5 0 10

CONST. REV.

R/W REV.

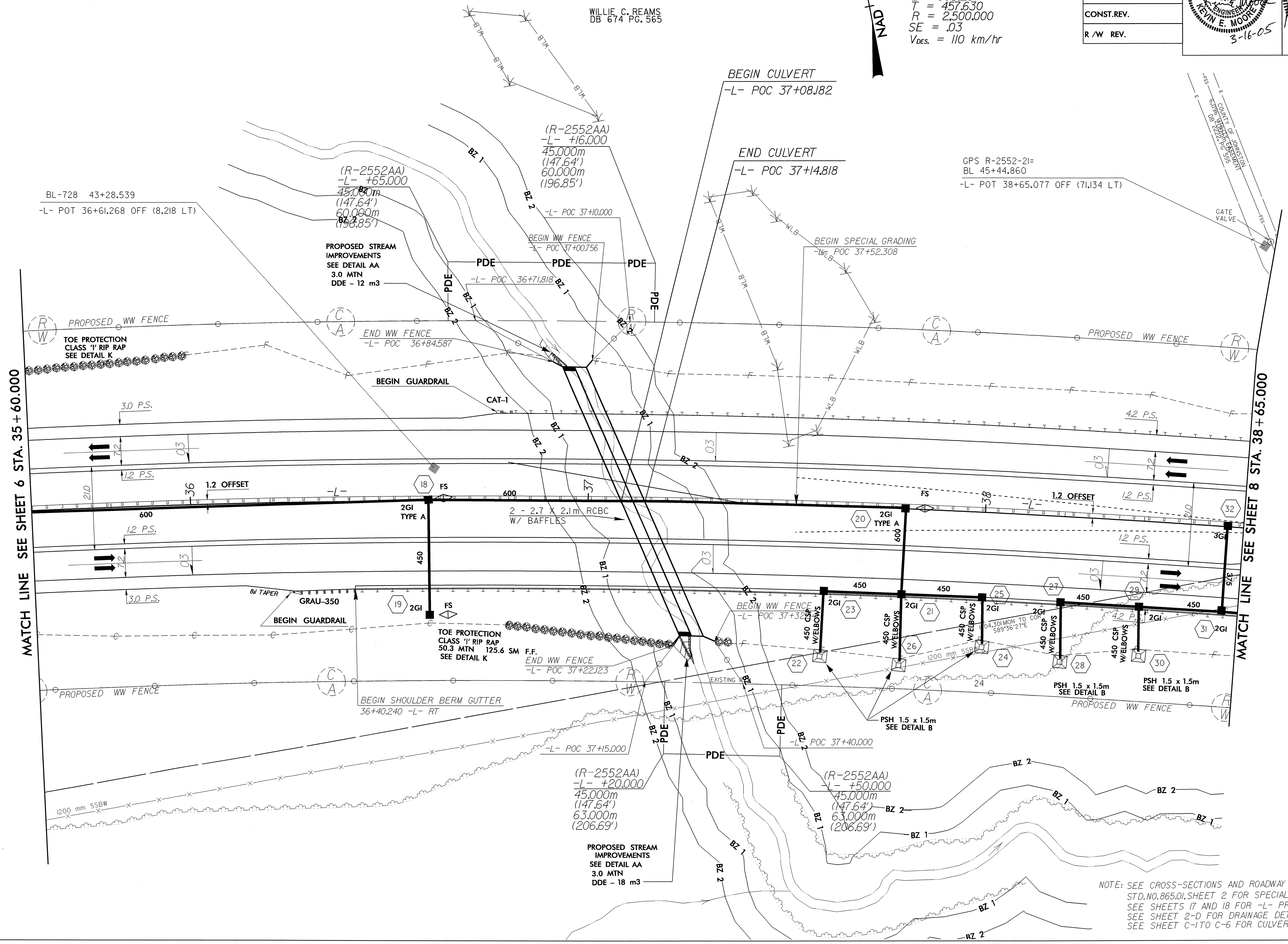
PROJECT REFERENCE NO.	R-2552AB	SHEET NO.	7
R/W SHEET NO.	R-2552AA *21 & *22		
ROADWAY DESIGN ENGINEER	SEAL 24812 KEVIN E. MOORE	HYDRAULICS ENGINEER	SEAL 18533 A. NOTTINGHAM
	3-16-05		3/16/05

-L-

PI = 38+81.623
 $\Delta = 20^\circ 44' 47.5''$ (RT)
 L = 905.237
 T = 457.630
 R = 2,500.000
 SE = .03
 V_{DES.} = 110 km/hr

WILLIE C. REAMS
DB 674 PG. 565

NAD 83



REVISIONS

MATCH LINE SEE SHEET 6 STA. 35 + 60.000

MATCH LINE SEE SHEET 8 STA. 38 + 65.000

31-JAN-2005 14:24
S:\Projects\2552AB\2552AB.dwg
K:\Users\kmoore