

8/17/99

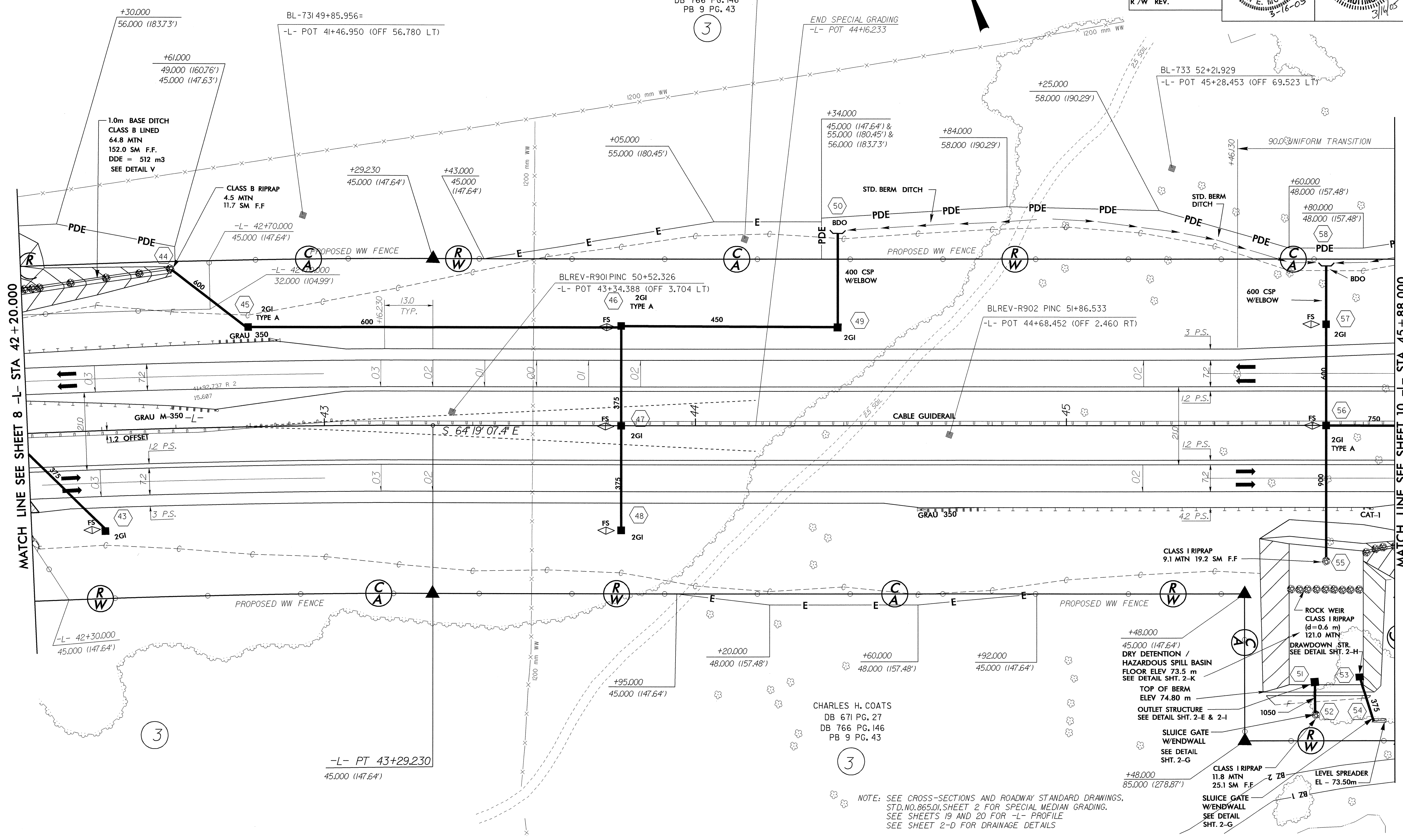
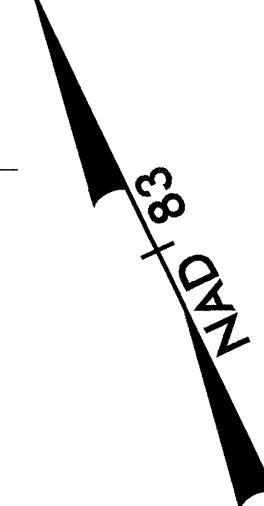
METRIC

CONST. REV.
R/W REV.

PROJECT REFERENCE NO. R-2552AB	SHEET NO. 9
R/W SHEET NO.	
ROADWAY DESIGN ENGINEER	HYDRAULICS ENGINEER

-L-
 $PI = 38+81.623$
 $\Delta = 20^{\circ} 44' 47.5'' (RT)$
 $L = 905.237$
 $T = 457.630$
 $R = 2,500.000$
 $SE = .03$
 $V_{DES} = 110 \text{ km/hr}$

CHARLES H. COATS
 DB 671 PG. 27
 DB 766 PG. 146
 PB 9 PG. 43



MATCH LINE SEE SHEET 8 -L- STA 42+20.000

MATCH LINE SEE SHEET 10 -L- STA 45+88.000

CHARLES H. COATS
 DB 671 PG. 27
 DB 766 PG. 146
 PB 9 PG. 43

NOTE: SEE CROSS-SECTIONS AND ROADWAY STANDARD DRAWINGS, STD. NO. 865.01, SHEET 2 FOR SPECIAL MEDIAN GRADING. SEE SHEETS 19 AND 20 FOR -L- PROFILE. SEE SHEET 2-D FOR DRAINAGE DETAILS.

REVISIONS

R/W 2005-2030
 REVISIONS
 1-10/05
 1-10/05