

METRIC

PROJECT REFERENCE NO. R-2552AB SHEET NO. 12

R/W SHEET NO.

ROADWAY DESIGN ENGINEER

HYDRAULICS ENGINEER

CONST. REV.

R/W REV.

5-2-05

5/2/05

-RP-A

PIs = 10+38.594 R 1 = 1682.500
 Δs 1 = 1°05'20.3" (RT) Ls = 64.000
 R 2 = 400.000 Δs 2 = 4°35'04.4" (RT) R = 400.000
 Ls = 64.000 LT = 38.594
 ST = 25.455

PI = 11+55.297 Δ = 25°42'50.9" (RT) L = 179.519
 T = 91.297 R = 400.000
 SE = .08 V = 100 km/hr

PIs = 12+64.865 Δs = 4°35'01.2" (RT) Ls = 64.000
 LT = 42.681 ST = 21.346

-L-

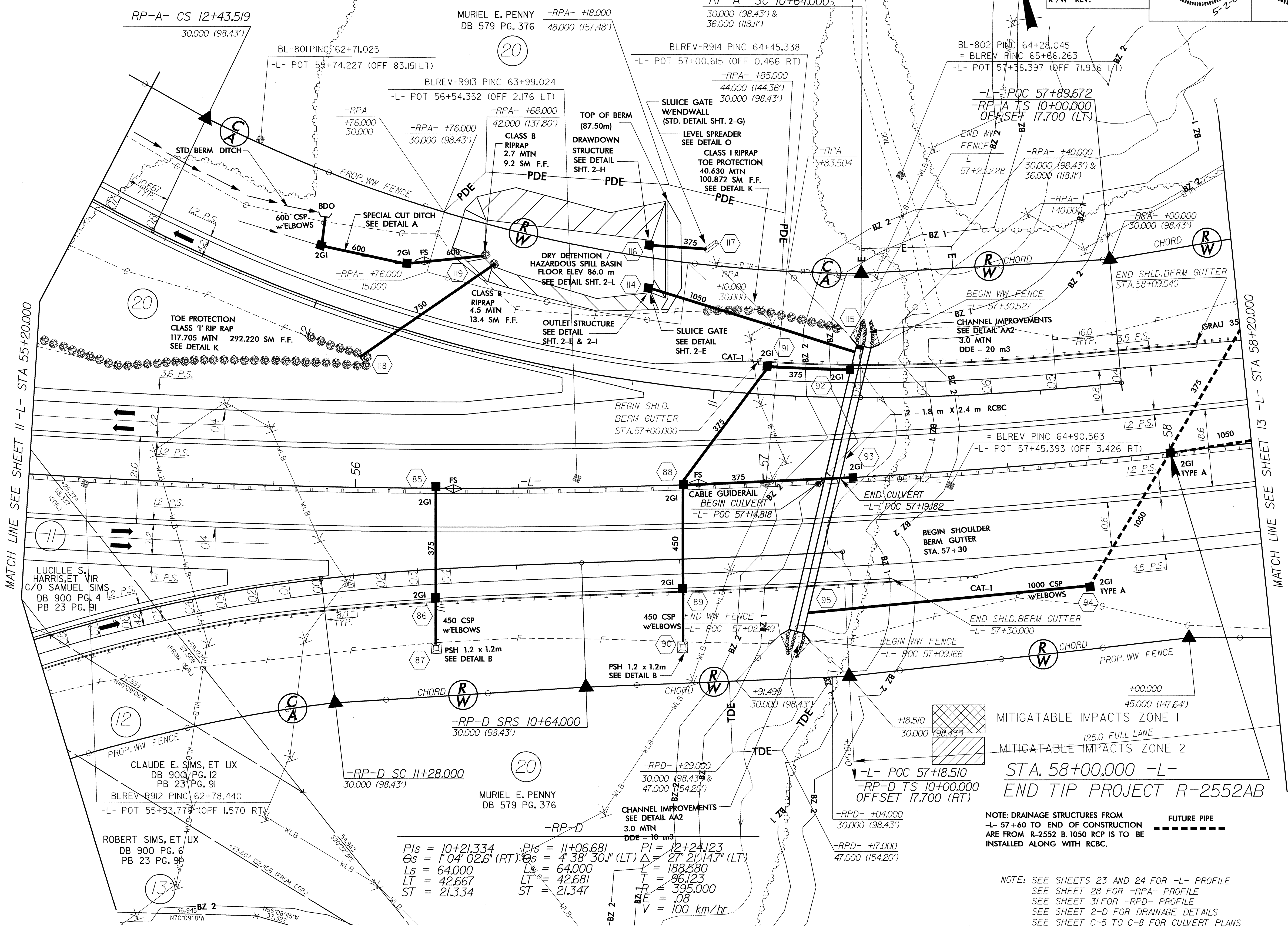
PIs = 54+26.592 Δs = 1°36'03.3" (LT) Ls = 95.000
 LT = 63.336 ST = 31.669

PI = 57+45.284 Δ = 19°10'00.7" (LT) L = 568.692
 T = 287.028 R = 1,700.000
 SE = .04 Vdes. = 110 km/hr

PIs = 60+58.617 Δs = 1°36'03.3" (LT) Ls = 95.000
 LT = 63.336 ST = 31.669

MATCH LINE SEE SHEET 11 -L- STA 55+20.000

MATCH LINE SEE SHEET 13 -L- STA 58+20.000



-RP-D

PIs = 10+21.334 Δs = 1°04'02.6" (RT) Ls = 64.000
 LT = 42.667 ST = 21.334

PI = 11+06.681 Δs = 4°38'30.1" (LT) Ls = 64.000
 LT = 42.681 ST = 21.347

PI = 12+24.123 Δ = 27°21'14.7" (LT) L = 188.580
 T = 96.123 R = 395.000
 SE = .08 V = 100 km/hr

MITIGATABLE IMPACTS ZONE 1
 125.0 FULL LANE
 MITIGATABLE IMPACTS ZONE 2
 STA. 58+00.000 -L-
 END TIP PROJECT R-2552AB

NOTE: DRAINAGE STRUCTURES FROM -L- 57+60 TO END OF CONSTRUCTION ARE FROM R-2552 B. 1050 RCP IS TO BE INSTALLED ALONG WITH RCBC.

NOTE: SEE SHEETS 23 AND 24 FOR -L- PROFILE
 SEE SHEET 28 FOR -RPA- PROFILE
 SEE SHEET 31 FOR -RPD- PROFILE
 SEE SHEET 2-D FOR DRAINAGE DETAILS
 SEE SHEET C-5 TO C-8 FOR CULVERT PLANS

REVISIONS

8/17/2005
 8/18/2005
 8/19/2005
 8/22/2005
 8/23/2005
 8/24/2005
 8/25/2005
 8/26/2005
 8/27/2005
 8/28/2005
 8/29/2005
 8/30/2005
 8/31/2005
 9/1/2005
 9/2/2005
 9/3/2005
 9/4/2005
 9/5/2005
 9/6/2005
 9/7/2005
 9/8/2005
 9/9/2005
 9/10/2005
 9/11/2005
 9/12/2005
 9/13/2005
 9/14/2005
 9/15/2005
 9/16/2005
 9/17/2005
 9/18/2005
 9/19/2005
 9/20/2005
 9/21/2005
 9/22/2005
 9/23/2005
 9/24/2005
 9/25/2005
 9/26/2005
 9/27/2005
 9/28/2005
 9/29/2005
 9/30/2005
 10/1/2005
 10/2/2005
 10/3/2005
 10/4/2005
 10/5/2005
 10/6/2005
 10/7/2005
 10/8/2005
 10/9/2005
 10/10/2005
 10/11/2005
 10/12/2005
 10/13/2005
 10/14/2005
 10/15/2005
 10/16/2005
 10/17/2005
 10/18/2005
 10/19/2005
 10/20/2005
 10/21/2005
 10/22/2005
 10/23/2005
 10/24/2005
 10/25/2005
 10/26/2005
 10/27/2005
 10/28/2005
 10/29/2005
 10/30/2005
 10/31/2005
 11/1/2005
 11/2/2005
 11/3/2005
 11/4/2005
 11/5/2005
 11/6/2005
 11/7/2005
 11/8/2005
 11/9/2005
 11/10/2005
 11/11/2005
 11/12/2005
 11/13/2005
 11/14/2005
 11/15/2005
 11/16/2005
 11/17/2005
 11/18/2005
 11/19/2005
 11/20/2005
 11/21/2005
 11/22/2005
 11/23/2005
 11/24/2005
 11/25/2005
 11/26/2005
 11/27/2005
 11/28/2005
 11/29/2005
 11/30/2005
 12/1/2005
 12/2/2005
 12/3/2005
 12/4/2005
 12/5/2005
 12/6/2005
 12/7/2005
 12/8/2005
 12/9/2005
 12/10/2005
 12/11/2005
 12/12/2005
 12/13/2005
 12/14/2005
 12/15/2005
 12/16/2005
 12/17/2005
 12/18/2005
 12/19/2005
 12/20/2005
 12/21/2005
 12/22/2005
 12/23/2005
 12/24/2005
 12/25/2005
 12/26/2005
 12/27/2005
 12/28/2005
 12/29/2005
 12/30/2005
 12/31/2005