
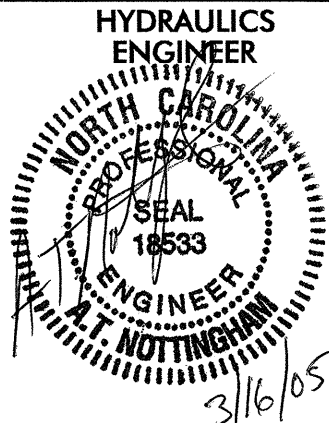
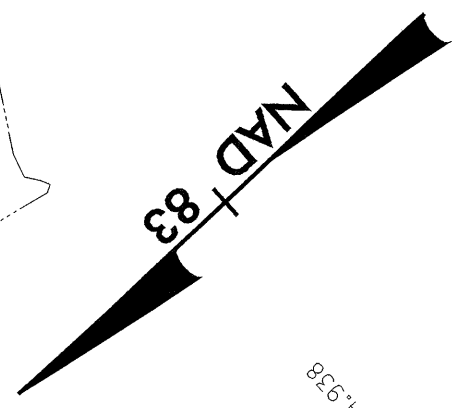
 CONST. REV.	PROJECT REFERENCE NO. R-2552AB	SHEET NO. 15
	R/W SHEET NO.	
 ROADWAY DESIGN ENGINEER	 HYDRAULICS ENGINEER	
R/W REV.		

MATCH LINE SEE SHEET II  
SERVICE RD.-D- STA II+000

NOTE: SEE SHEET 26 FOR -Y2- PROFILE  
SEE SHEET 33 FOR SERVICE RD.-D- PROFILE  
SEE SHEET 33 FOR -Y3- PROFILE  
SEE SHEET 2-D FOR DRAINAGE DETAILS



REVISIONS

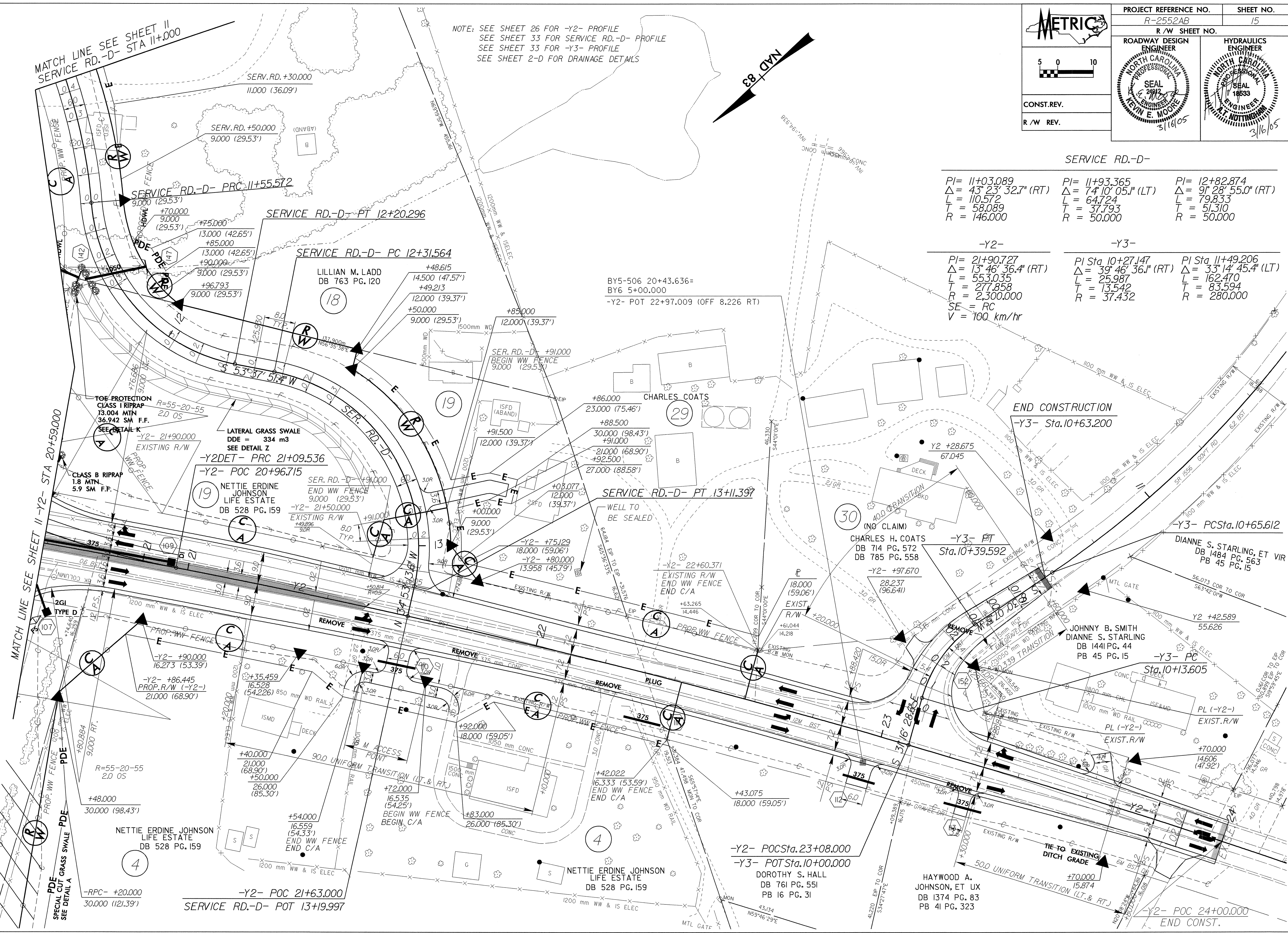
MATCH LINE SEE SHEET II -Y2- STA 20+59.000

MATCH LINE SEE SHEET II -Y2- STA 20+59.000

SERVICE RD.-D-

PI= 11+03.089 $\Delta = 43^{\circ} 23' 32.7''$ (RT) L = 110.572 T = 58.089 R = 146.000	PI= 11+93.365 $\Delta = 74^{\circ} 10' 05.1''$ (LT) L = 64.724 T = 37.793 R = 50.000	PI= 12+82.874 $\Delta = 91^{\circ} 28' 55.0''$ (RT) L = 79.833 T = 51.310 R = 50.000
--	--	--

-Y2- PI= 21+90.727 $\Delta = 13^{\circ} 46' 36.4''$ (RT) L = 553.035 T = 277.858 R = 2,300.000 SE = RC V = 100 km/hr	-Y3- PI Sta. 10+27.147 $\Delta = 39^{\circ} 46' 36.1''$ (RT) L = 25.987 T = 13.542 R = 37.432	PI Sta. 11+49.206 $\Delta = 33^{\circ} 14' 45.4''$ (LT) L = 162.470 T = 83.594 R = 280.000
---	--	--



END CONSTRUCTION  
-Y3- Sta. 10+63.200

-Y3- PC Sta. 10+65.612

-Y3- PT Sta. 10+39.592

-Y3- PC Sta. 10+13.605

-Y2- POC Sta. 23+08.000  
-Y3- POT Sta. 10+00.000

HAYWOOD A. JOHNSON, ET UX  
DB 1374 PG. 83  
PB 41 PG. 323

NETTIE ERDINE JOHNSON LIFE ESTATE  
DB 528 PG. 159

NETTIE ERDINE JOHNSON LIFE ESTATE  
DB 528 PG. 159

DIANNE S. STARLING, ET VIR  
DB 1484 PG. 563  
PB 45 PG. 15

JOHNNY B. SMITH  
DIANNE S. STARLING  
DB 1441 PG. 44  
PB 45 PG. 15

SERVICE RD.-D- PT 13+11.397

SERVICE RD.-D- PC 12+31.564

SERVICE RD.-D- PT 12+20.296

-Y2- POC 21+96.715

-Y2- DET- PRC 21+09.536

-Y2- POC 20+96.715

-Y2- POC 20+96.715

-Y2- POC 20+96.715

-Y2- POC 20+96.715

-Y2- POC 20+96.715

-Y2- POC 20+96.715

-Y2- POC 20+96.715

-Y2- POC 20+96.715

-Y2- POC 20+96.715

-Y2- POC 20+96.715

-Y2- POC 20+96.715

-Y2- POC 21+63.000

-Y2- POC 21+63.000

-Y2- POC 21+63.000

-Y2- POC 21+63.000

-Y2- POC 21+63.000

-Y2- POC 21+63.000

-Y2- POC 21+63.000

-Y2- POC 21+63.000

-Y2- POC 21+63.000

-Y2- POC 21+63.000

-Y2- POC 21+63.000

-Y2- POC 21+63.000

-Y2- POC 21+63.000

-Y2- POC 21+63.000

-Y2- POC 21+63.000

-Y2- POC 21+63.000

-Y2- POC 21+63.000

-Y2- POC 21+63.000

-Y2- POC 21+63.000

-Y2- POC 21+63.000

-Y2- POC 21+63.000

-Y2- POC 21+63.000

-Y2- POC 21+63.000

-Y2- POC 21+63.000

-Y2- POC 21+63.000

-Y2- POC 21+63.000

-Y2- POC 21+63.000

-Y2- POC 21+63.000

-Y2- POC 21+63.000

-Y2- POC 21+63.000

-Y2- POC 21+63.000

-Y2- POC 21+63.000

-Y2- POC 21+63.000

-Y2- POC 21+63.000

-Y2- POC 21+63.000

-Y2- POC 21+63.000

-Y2- POC 21+63.000

-Y2- POC 21+63.000

-Y2- POC 21+63.000

-Y2- POC 21+63.000

-Y2- POC 21+63.000

-Y2- POC 21+63.000

-Y2- POC 21+63.000

-Y2- POC 21+63.000

-Y2- POC 21+63.000

-Y2- POC 21+63.000

-Y2- POC 21+63.000

-Y2- POC 21+63.000

-Y2- POC 21+63.000

-Y2- POC 21+63.000

-Y2- POC 21+63.000

-Y2- POC 21+63.000

-Y2- POC 21+63.000

-Y2- POC 21+63.000

-Y2- POC 21+63.000

-Y2- POC 21+63.000

-Y2- POC 21+63.000

-Y2- POC 21+63.000

-Y2- POC 21+63.000

-Y2- POC 21+63.000

-Y2- POC 21+63.000

-Y2- POC 21+63.000

-Y2- POC 21+63.000

-Y2- POC 21+63.000

-Y2- POC 21+63.000

-Y2- POC 21+63.000

-Y2- POC 21+63.000

-Y2- POC 21+63.000

-Y2- POC 21+63.000

-Y2- POC 21+63.000

-Y2- POC 21+63.000

-Y2- POC 21+63.000

-Y2- POC 21+63.000

-Y2- POC 21+63.000

-Y2- POC 21+63.000

-Y2- POC 21+63.000

-Y2- POC 21+63.000

-Y2- POC 21+63.000

-Y2- POC 21+63.000

-Y2- POC 21+63.000

-Y2- POC 21+63.000

-Y2- POC 21+63.000

-Y2- POC 21+63.000

-Y2- POC 21+63.000

-Y2- POC 21+63.000

-Y2- POC 21+63.000

-Y2- POC 21+63.000

-Y2- POC 21+63.000

-Y2- POC 21+63.000

-Y2- POC 21+63.000

-Y2- POC 21+63.000

-Y2- POC 21+63.000

-Y2- POC 21+63.000

-Y2- POC 21+63.000

-Y2- POC 21+63.000

-Y2- POC 21+63.000

-Y2- POC 21+63.000

-Y2- POC 21+63.000

-Y2- POC 21+63.000

-Y2- POC 21+63.000

-Y2- POC 21+63.000

-Y2- POC 21+63.000

-Y2- POC 21+63.000

-Y2- POC 21+63.000

-Y2- POC 21+63.000

-Y2- POC 21+63.000

-Y2- POC 21+63.000

-Y2- POC 21+63.000

-Y2- POC 21+63.000

-Y2- POC 21+63.000

-Y2- POC 21+63.000

-Y2- POC 21+63.000

-Y2- POC 21+63.000

-Y2- POC 21+63.000

-Y2- POC 21+63.000

-Y2- POC 21+63.000

-Y2- POC 21+63.000

-Y2- POC 21+63.000

-Y2- POC 21+63.000

-Y2- POC 21+63.000

-Y2- POC 21+63.000

-Y2- POC 21+63.000

-Y2- POC 21+63.000

-Y2- POC 21+63.000

-Y2- POC 21+63.000

-Y2- POC 21+63.000

-Y2- POC 21+63.000

-Y2- POC 21+63.000

-Y2- POC 21+63.000

-Y2- POC 21+63.000

-Y2- POC 21+63.000

-Y2- POC 21+63.000

-Y2- POC 21+63.000

-Y2- POC 21+63.000

-Y2- POC 21+63.000

-Y2- POC 21+63.000

-Y2- POC 21+63.000

-Y2- POC 21+63.000

-Y2- POC 21+63.000

-Y2- POC 21+63.000

-Y2- POC 21+63.000

-Y2- POC 21+63.000

-Y2- POC 21+63.000

-Y2- POC 21+63.000

-Y2- POC 21+63.000

-Y2- POC 21+63.000

-Y2- POC 21+63.000

-Y2- POC 21+63.000

-Y2- POC 21+63.000

-Y2- POC 21+63.000

-Y2- POC 21+63.000

-Y2- POC 21+63.000

-Y2- POC 21+63.000

-Y2- POC 21+63.000

-Y2- POC 21+63.000

-Y2- POC 21+63.000

-Y2- POC 21+63.000

-Y2- POC 21+63.000

-Y2- POC 21+63.000

-Y2- POC 21+63.000

-Y2- POC 21+63.000

-Y2- POC 21+63.000

-Y2- POC 21+63.000

-Y2- POC 21+63.000

-Y2- POC 21+63.000

-Y2- POC 21+63.000

-Y2- POC 21+63.000

-Y2- POC 21+63.000

-Y2- POC 21+63.000

-Y2- POC 21+63.000

-Y2- POC 21+63.000

-Y2- POC 21+63.000

-Y2- POC 21+63.000

-Y2- POC 21+63.000

-Y2- POC 21+63.000

-Y2- POC 21+63.000

-Y2- POC 21+63.000

-Y2- POC 21+63.000

-Y2- POC 21+63.000

-Y2- POC 21+63.000

-Y2- POC 21+63.000