

6/09/05

B.M. R-2552-15
N 208,696.4610 E 651,634.783
LOCATED 48.027 LT. OF -L- STA.
27+75.439 AT AN ELEVATION 87.1560

-L- US 70 BYPASS



PROJECT REFERENCE NO. R-2552AB SHEET NO. 16

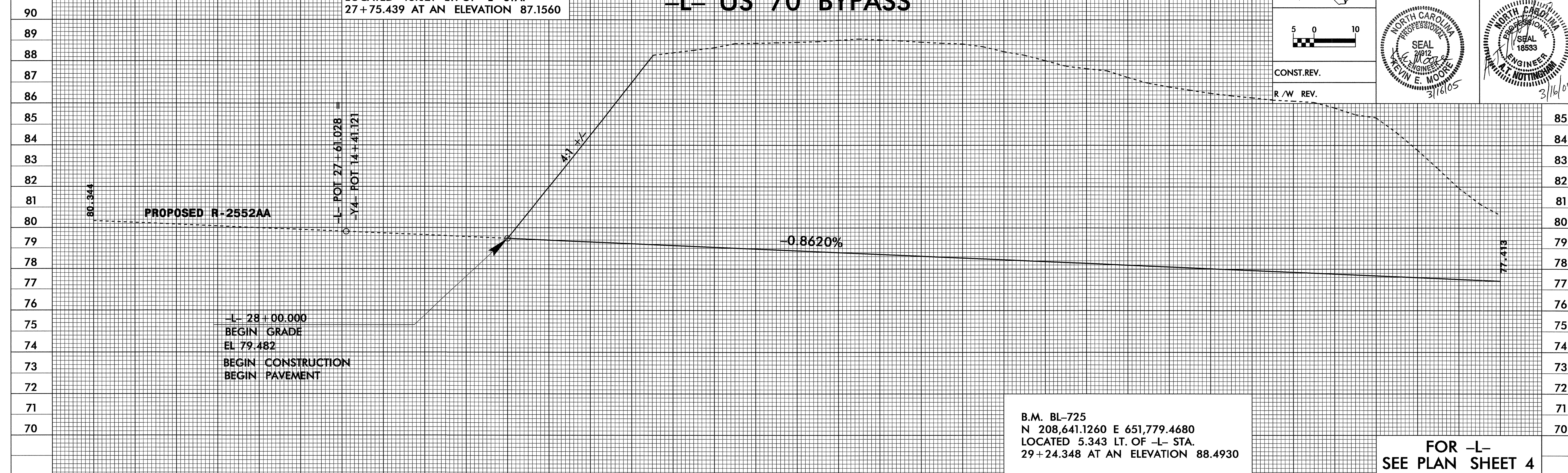
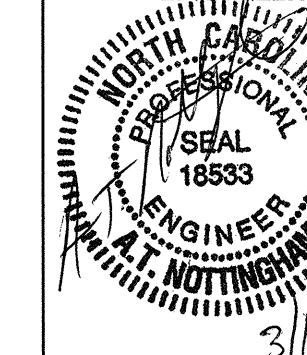
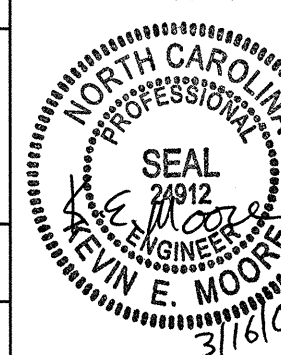
ROADWAY DESIGN ENGINEER

HYDRAULICS ENGINEER



CONST. REV.

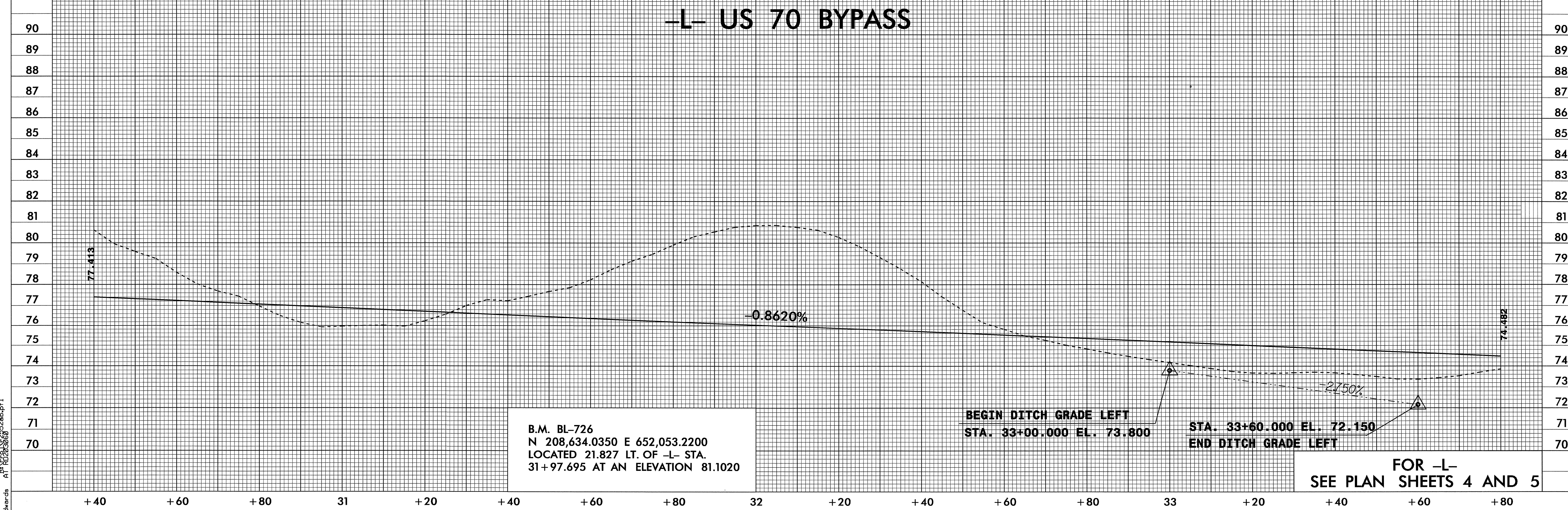
R/W REV.



27 +20 +40 +60 +80 28 +20 +40 +60 +80 29 +20 +40 +60 +80 30 +20 +40

B.M. BL-725
N 208,641.1260 E 651,779.4680
LOCATED 5.343 LT. OF -L- STA.
29+24.348 AT AN ELEVATION 88.4930

FOR -L-
SEE PLAN SHEET 4



+40 +60 +80 31 +20 +40 +60 +80 32 +20 +40 +60 +80 33 +20 +40 +60 +80

B.M. BL-726
N 208,634.0350 E 652,053.2200
LOCATED 21.827 LT. OF -L- STA.
31+97.695 AT AN ELEVATION 81.1020

BEGIN DITCH GRADE LEFT
STA. 33+00.000 EL. 73.800

STA. 33+60.000 EL. 72.150
END DITCH GRADE LEFT

FOR -L-
SEE PLAN SHEETS 4 AND 5

13-JAN-2005 11:02 AM
HEC:\chris\ds\13-2552ab\p1