

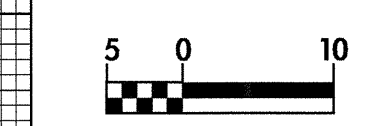
-L- US 70 BYPASS



PROJECT REFERENCE NO. R-2552AB SHEET NO. 17

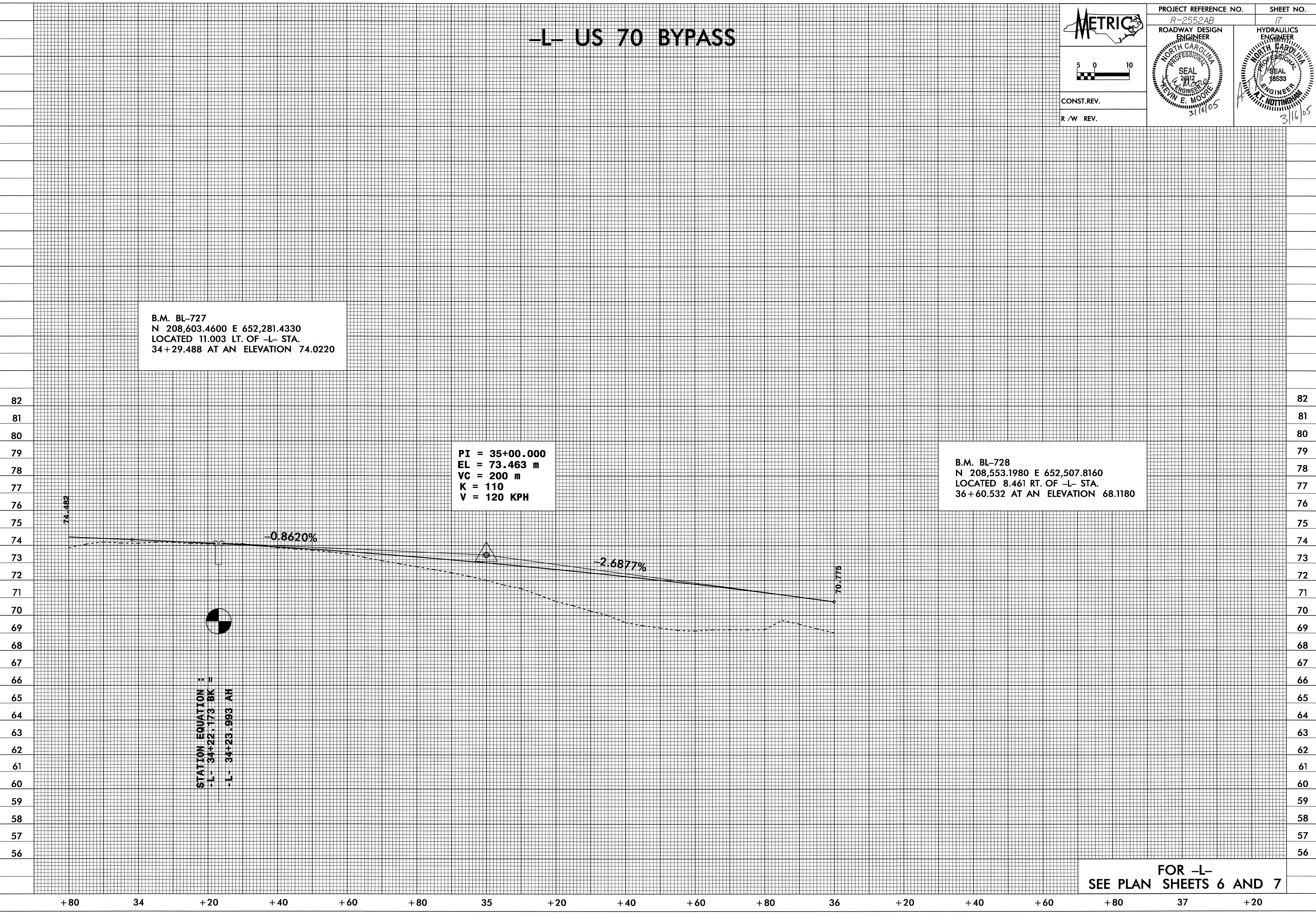
ROADWAY DESIGN ENGINEER
NORTH CAROLINA PROFESSIONAL SEAL 24812
KEVIN E. MOORE
3/16/05

HYDRAULICS ENGINEER
NORTH CAROLINA PROFESSIONAL SEAL 18533
3/16/05



CONST. REV.
R/W REV.

13-JAN-2005 11:02 HEchar-ds AT R:\2005\2552AB\682552abp1



B.M. BL-727
N 208,603.4600 E 652,281.4330
LOCATED 11.003 LT. OF -L- STA.
34+29.488 AT AN ELEVATION 74.0220

PI = 35+00.000
EL = 73.463 m
VC = 200 m
K = 110
V = 120 KPH

B.M. BL-728
N 208,553.1980 E 652,507.8160
LOCATED 8.461 RT. OF -L- STA.
36+60.532 AT AN ELEVATION 68.1180

STATION EQUATION :
-L- 34+22.173 BK =
-L- 34+23.993 AH

FOR -L-
SEE PLAN SHEETS 6 AND 7