

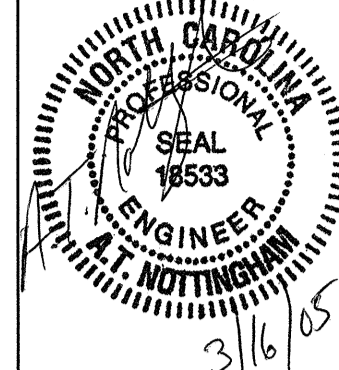
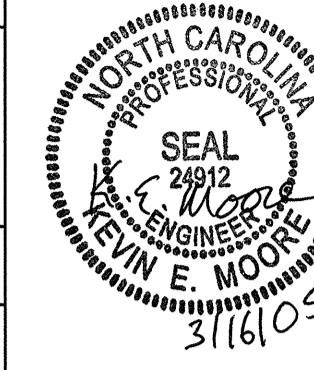
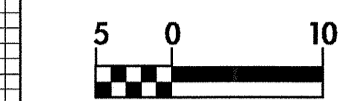
# -L- US 70 BYPASS



PROJECT REFERENCE NO. R-2552AB SHEET NO. 18

ROADWAY DESIGN ENGINEER

HYDRAULICS ENGINEER



CONST. REV.

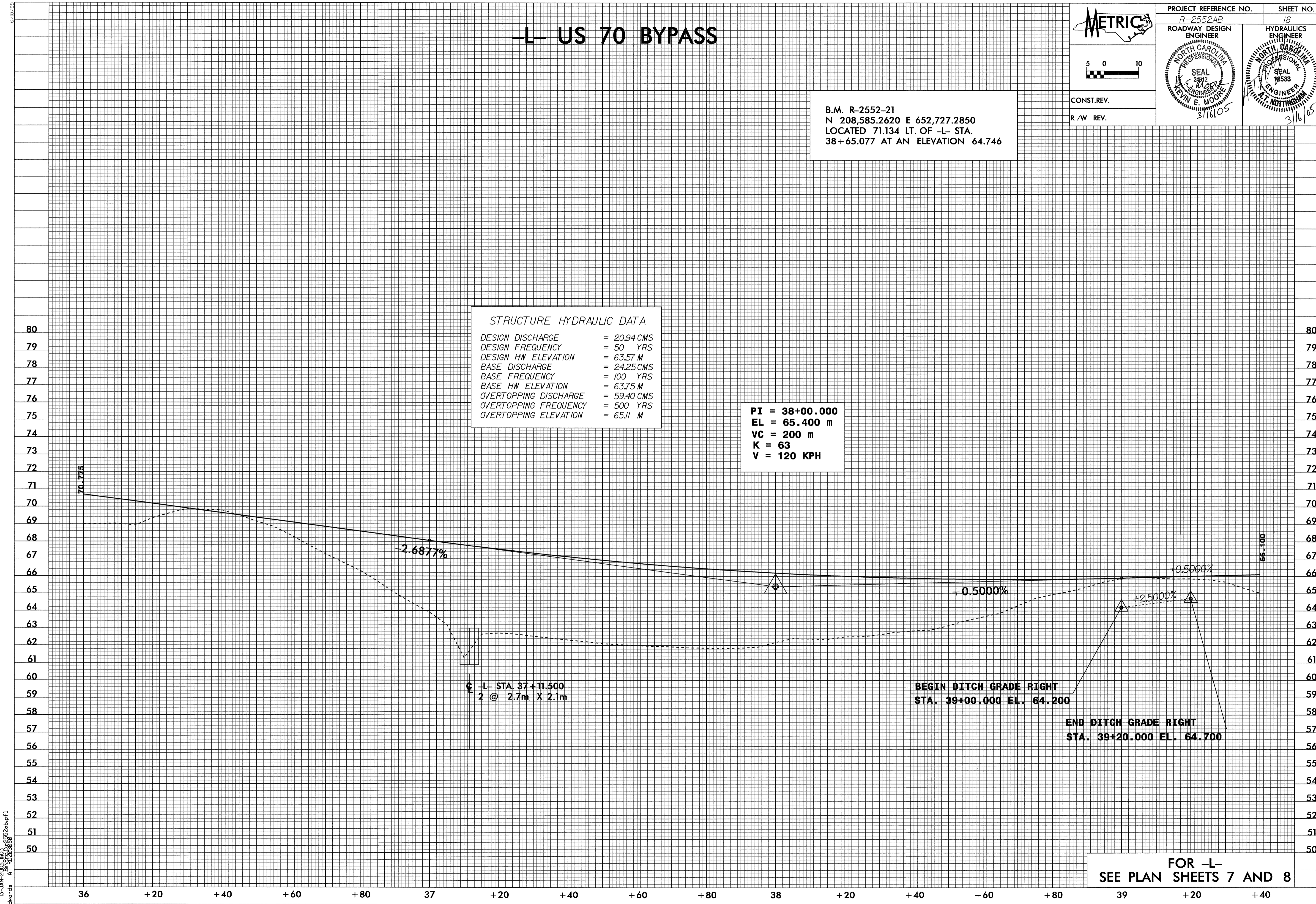
R /W REV.

B.M. R-2552-21  
 N 208,585.2620 E 652,727.2850  
 LOCATED 71.134 LT. OF -L- STA.  
 38+65.077 AT AN ELEVATION 64.746

### STRUCTURE HYDRAULIC DATA

DESIGN DISCHARGE = 20.94 CMS  
 DESIGN FREQUENCY = 50 YRS  
 DESIGN HW ELEVATION = 63.57 M  
 BASE DISCHARGE = 24.25 CMS  
 BASE FREQUENCY = 100 YRS  
 BASE HW ELEVATION = 63.75 M  
 OVERTOPPING DISCHARGE = 59.40 CMS  
 OVERTOPPING FREQUENCY = 500 YRS  
 OVERTOPPING ELEVATION = 65.11 M

PI = 38+00.000  
 EL = 65.400 m  
 VC = 200 m  
 K = 63  
 V = 120 KPH



CL -L- STA. 37+11.500  
 2 @ 2.7m X 2.1m

BEGIN DITCH GRADE RIGHT  
 STA. 39+00.000 EL. 64.200

END DITCH GRADE RIGHT  
 STA. 39+20.000 EL. 64.700

FOR -L-  
 SEE PLAN SHEETS 7 AND 8

6/10/03

13-JAN-2006 11:03 AM  
 HE:car-ds  
 R-2552-21-01