

-L- US 70 BYPASS



PROJECT REFERENCE NO. R-2552AB SHEET NO. 19

ROADWAY DESIGN ENGINEER
 NORTH CAROLINA PROFESSIONAL ENGINEER
 SEAL 29912
 KEVIN E. MOORE
 3/16/05

HYDRAULICS ENGINEER
 NORTH CAROLINA PROFESSIONAL ENGINEER
 SEAL 18833
 A. J. NOTTRIGEM
 3/16/05

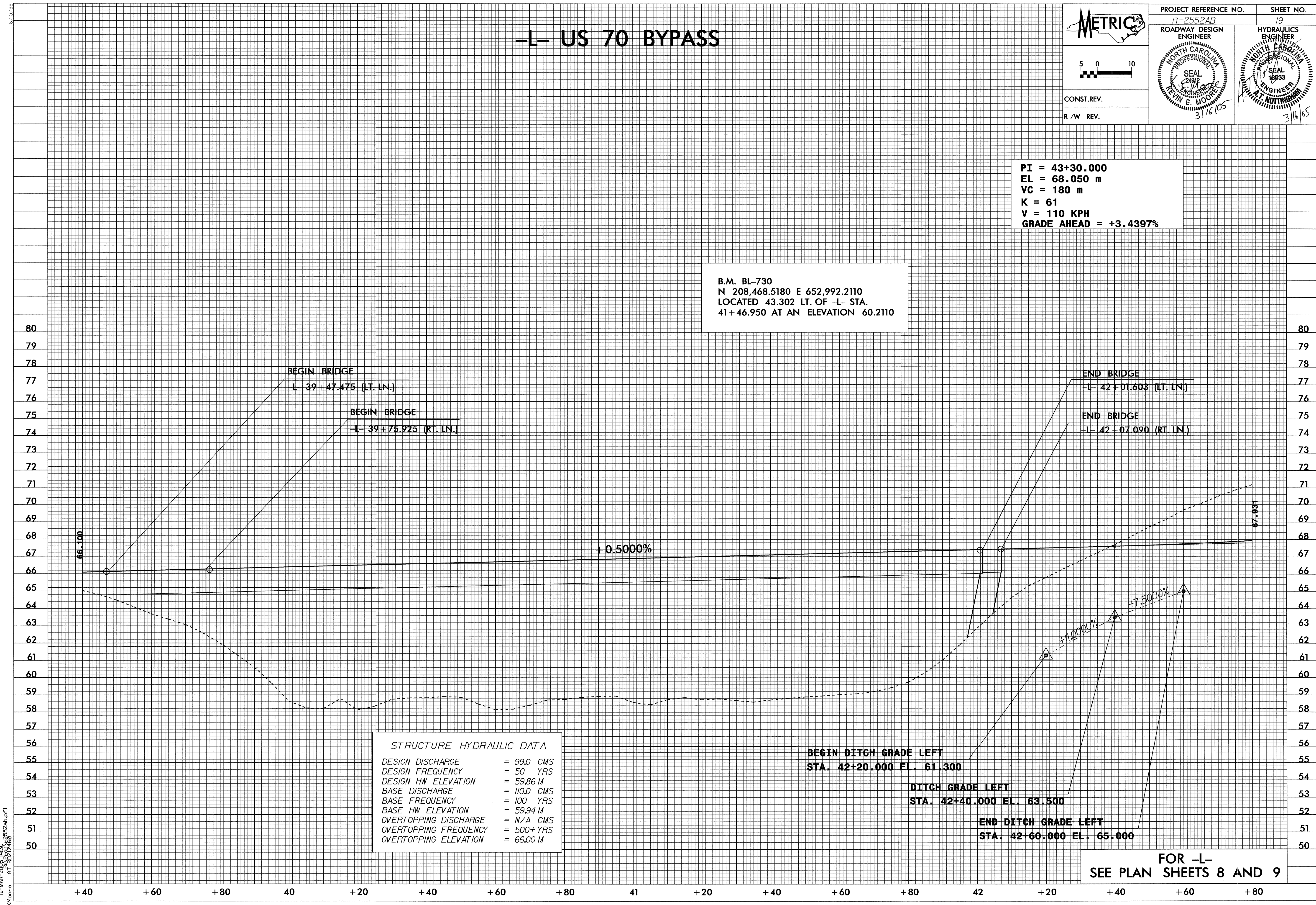


CONST. REV.

R / W REV.

PI = 43+30.000
 EL = 68.050 m
 VC = 180 m
 K = 61
 V = 110 KPH
 GRADE AHEAD = +3.4397%

B.M. BL-730
 N 208,468.5180 E 652,992.2110
 LOCATED 43.302 LT. OF -L- STA.
 41+46.950 AT AN ELEVATION 60.2110



STRUCTURE HYDRAULIC DATA	
DESIGN DISCHARGE	= 99.0 CMS
DESIGN FREQUENCY	= 50 YRS
DESIGN HW ELEVATION	= 59.86 M
BASE DISCHARGE	= 110.0 CMS
BASE FREQUENCY	= 100 YRS
BASE HW ELEVATION	= 59.94 M
OVERTOPPING DISCHARGE	= N/A CMS
OVERTOPPING FREQUENCY	= 500+ YRS
OVERTOPPING ELEVATION	= 66.00 M

BEGIN DITCH GRADE LEFT
 STA. 42+20.000 EL. 61.300

DITCH GRADE LEFT
 STA. 42+40.000 EL. 63.500

END DITCH GRADE LEFT
 STA. 42+60.000 EL. 65.000

FOR -L-
 SEE PLAN SHEETS 8 AND 9

6/10/99
 16-MAR-2005 14:50 28522b.p1
 KMoore AT 16522168