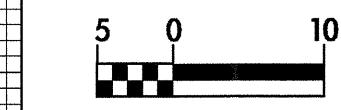


-L- US 70 BYPASS



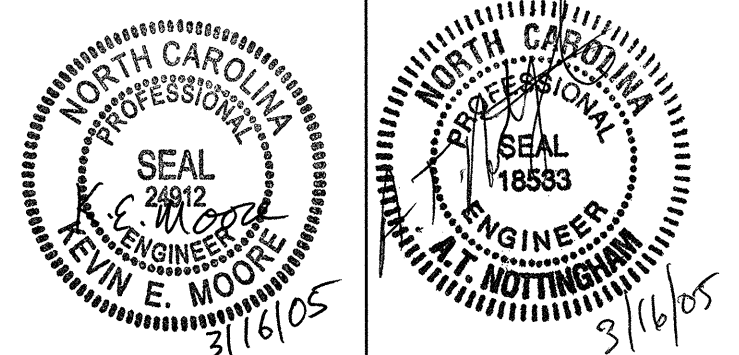
PROJECT REFERENCE NO. R-2552AB SHEET NO. 20

ROADWAY DESIGN ENGINEER HYDRAULICS ENGINEER

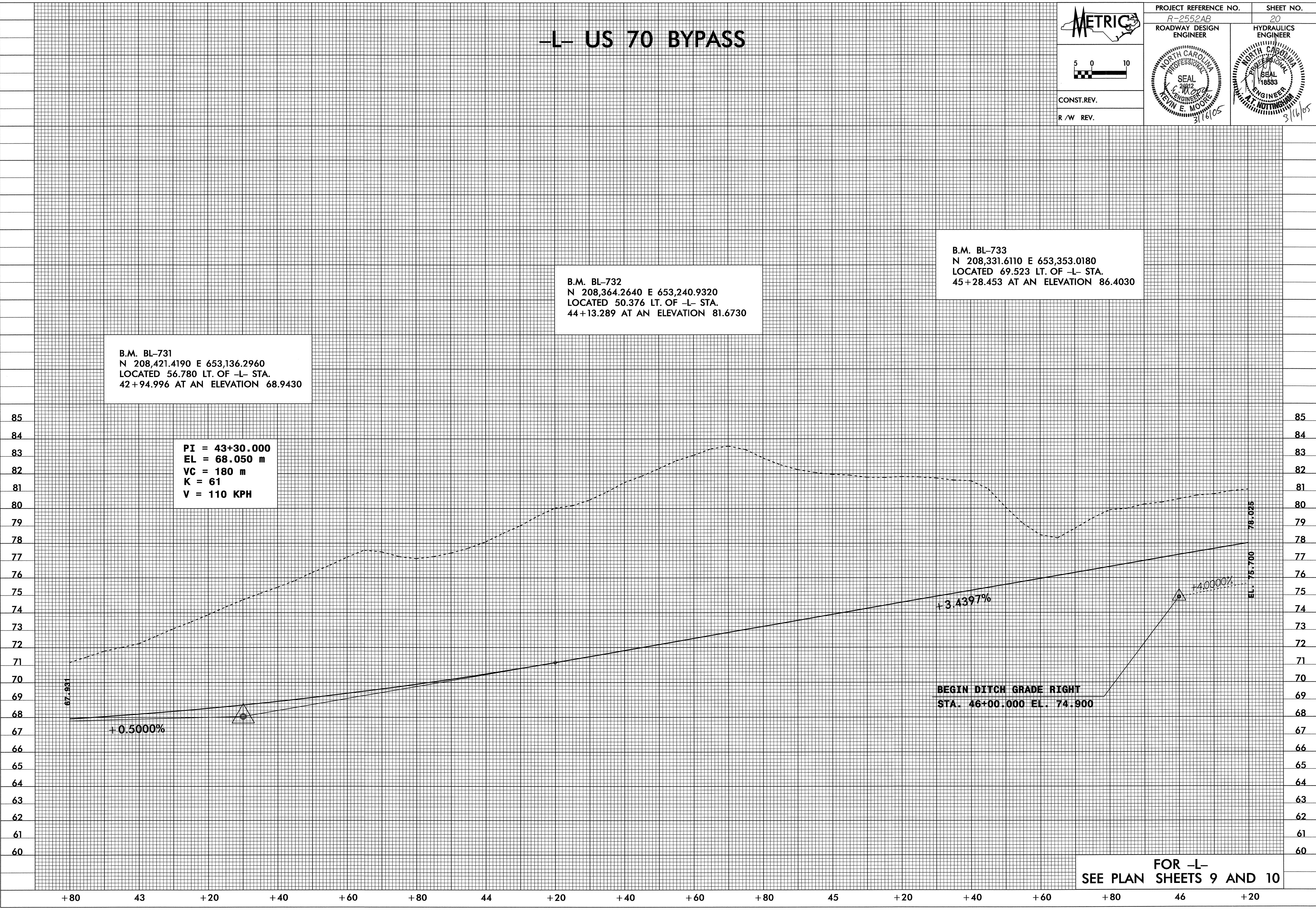


CONST. REV.

R/W REV.



6/10/99
13-JAN-2005 11:03
HE:arcds AT 11:20:36



B.M. BL-731
N 208,421.4190 E 653,136.2960
LOCATED 56.780 LT. OF -L- STA.
42+94.996 AT AN ELEVATION 68.9430

B.M. BL-732
N 208,364.2640 E 653,240.9320
LOCATED 50.376 LT. OF -L- STA.
44+13.289 AT AN ELEVATION 81.6730

B.M. BL-733
N 208,331.6110 E 653,353.0180
LOCATED 69.523 LT. OF -L- STA.
45+28.453 AT AN ELEVATION 86.4030

PI = 43+30.000
EL = 68.050 m
VC = 180 m
K = 61
V = 110 KPH

BEGIN DITCH GRADE RIGHT
STA. 46+00.000 EL. 74.900

FOR -L-
SEE PLAN SHEETS 9 AND 10