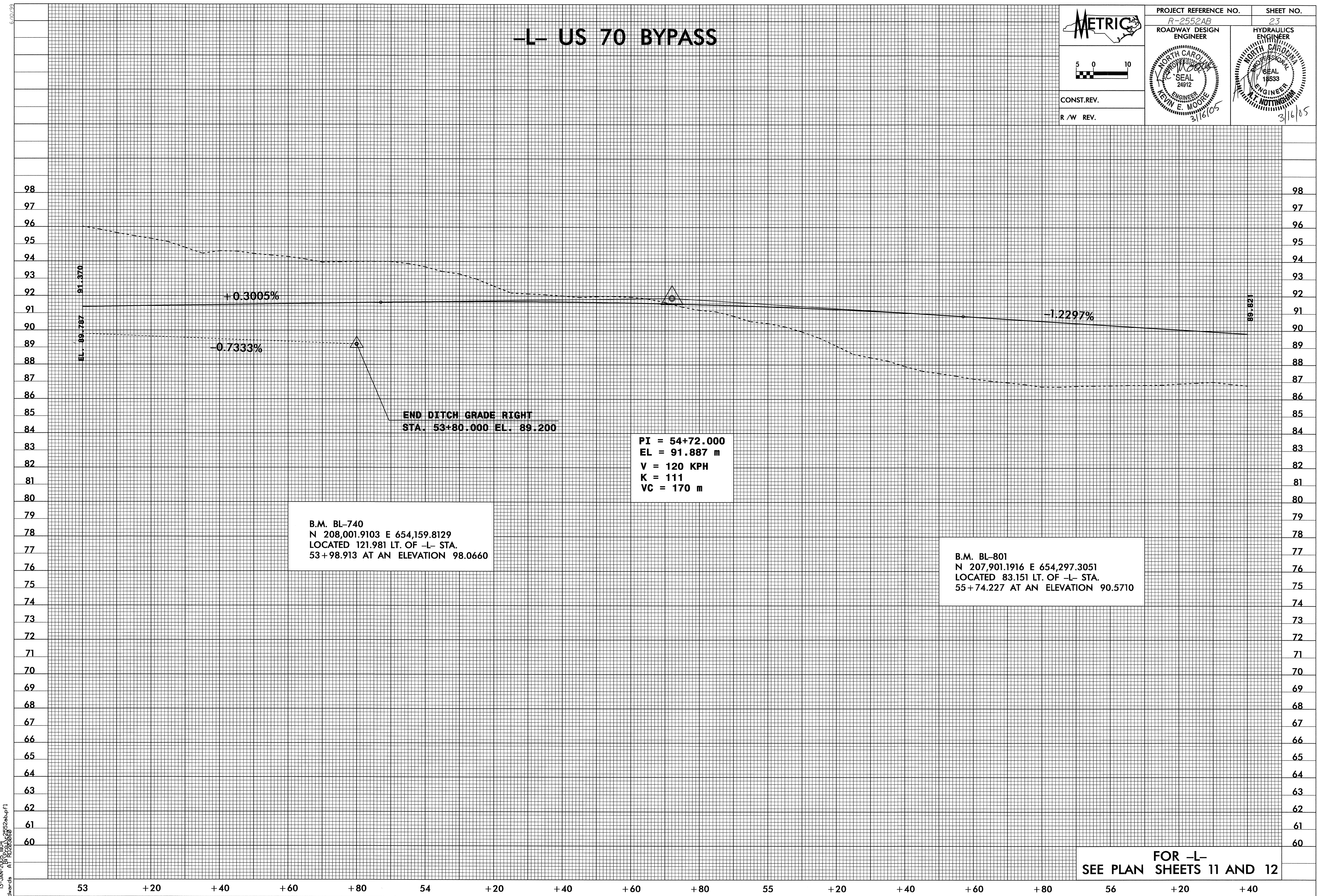


-L- US 70 BYPASS

 CONST. REV. R / W REV.	PROJECT REFERENCE NO. R-2552AB	SHEET NO. 23
	ROADWAY DESIGN ENGINEER	HYDRAULICS ENGINEER
 KEVIN E. MOORE 3/16/05		 J.L. NOTTINGHAM 3/16/05



B.M. BL-740
 N 208,001.9103 E 654,159.8129
 LOCATED 121.981 LT. OF -L- STA.
 53+98.913 AT AN ELEVATION 98.0660

PI = 54+72.000
 EL = 91.887 m
 V = 120 KPH
 K = 111
 VC = 170 m

B.M. BL-801
 N 207,901.1916 E 654,297.3051
 LOCATED 83.151 LT. OF -L- STA.
 55+74.227 AT AN ELEVATION 90.5710

FOR -L-
 SEE PLAN SHEETS 11 AND 12

6/10/05
 13-JAN-2005_1104_2552-bb.pfl
 HEAwards AP 11/20/05