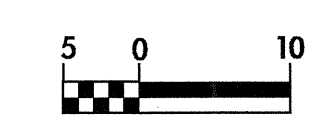




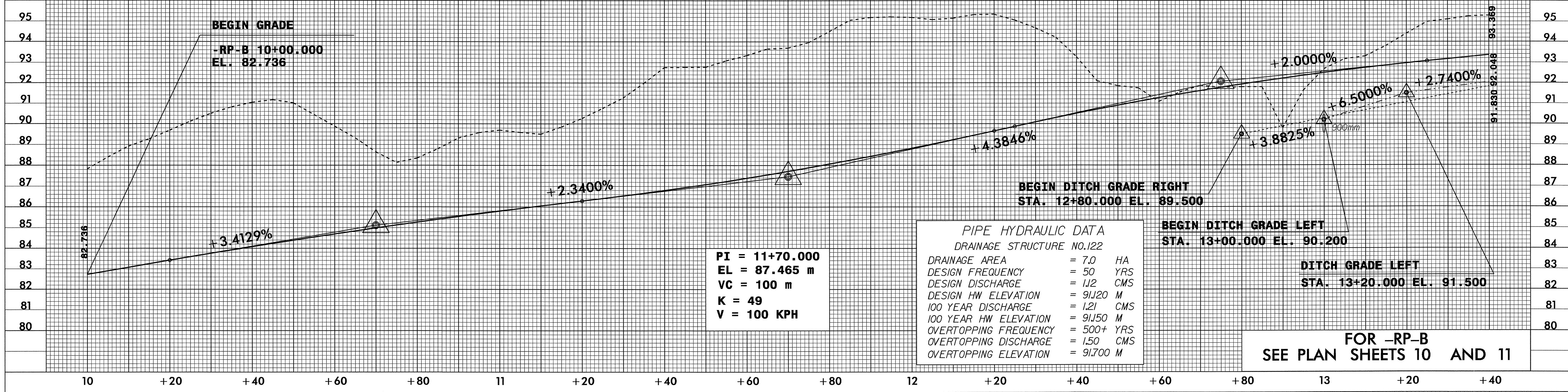
PROJECT REFERENCE NO. R-2552AB	SHEET NO. 29
ROADWAY DESIGN ENGINEER SEAL 24912 KEVIN E. MOORE	HYDRAULICS ENGINEER SEAL 18583 P. J. NOTTINGHAM
CONST. REV.	
R / W REV.	



-RP-B

PI = 10+70.000
EL = 85.125 m
VC = 100 m
K = 93
V = 110 KPH

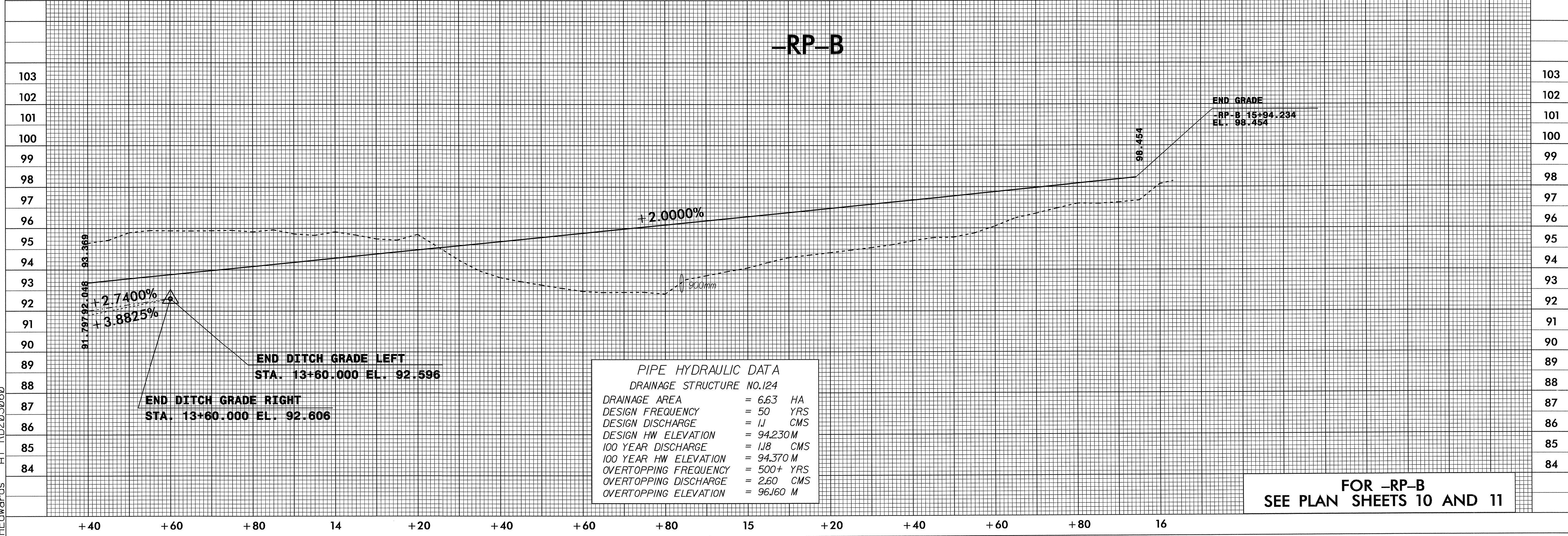
PI = 12+75.000
EL = 92.069 m
VC = 100 m
K = 42
V = 90 KPH



FOR -RP-B
SEE PLAN SHEETS 10 AND 11

-RP-B

PIPE HYDRAULIC DATA
DRAINAGE STRUCTURE NO.124
DRAINAGE AREA = 6.63 HA
DESIGN FREQUENCY = 50 YRS
DESIGN DISCHARGE = 11 CMS
DESIGN HW ELEVATION = 94.230 M
100 YEAR DISCHARGE = 118 CMS
100 YEAR HW ELEVATION = 94.370 M
OVERTOPPING FREQUENCY = 500+ YRS
OVERTOPPING DISCHARGE = 2.60 CMS
OVERTOPPING ELEVATION = 96.160 M



FOR -RP-B
SEE PLAN SHEETS 10 AND 11

3-JAN-2005 11:07
 R:\Projects\2552ab\01
 Headwards AT RD203060