

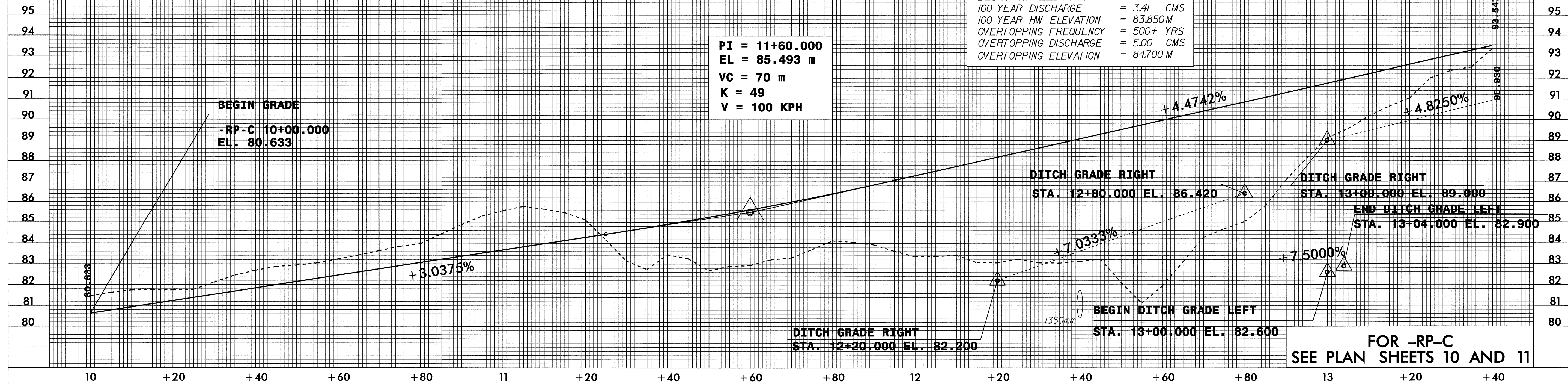
6/09/05

-RP-C

	PROJECT REFERENCE NO.	SHEET NO.
	R-2552AB	30
	ROADWAY DESIGN ENGINEER	HYDRAULICS ENGINEER
CONST. REV.		
R / W REV.		

PIPE HYDRAULIC DATA
DRAINAGE STRUCTURE NO.130

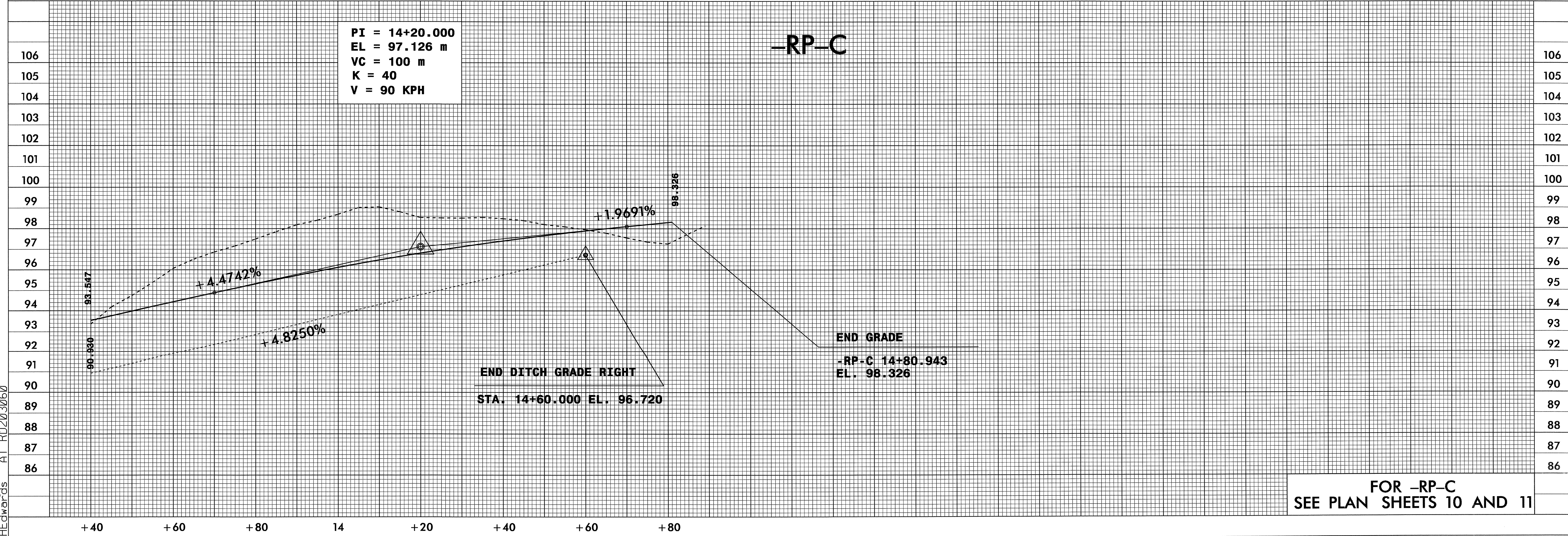
DRAINAGE AREA	= 17.4	HA
DESIGN FREQUENCY	= 50	YRS
DESIGN DISCHARGE	= 3.16	CMS
DESIGN HW ELEVATION	= 83.690M	
100 YEAR DISCHARGE	= 3.41	CMS
100 YEAR HW ELEVATION	= 83.850M	
OVERTOPPING FREQUENCY	= 500+	YRS
OVERTOPPING DISCHARGE	= 5.00	CMS
OVERTOPPING ELEVATION	= 84.700	M



FOR -RP-C
SEE PLAN SHEETS 10 AND 11

-RP-C

PI	= 14+20.000
EL	= 97.126 m
VC	= 100 m
K	= 40
V	= 90 KPH



FOR -RP-C
SEE PLAN SHEETS 10 AND 11

13-JAN-2005 11:08
R:\Projects\2552\epf\HEwards At Road\3060