

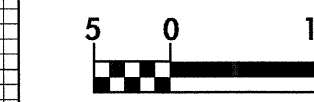
6/09/99

# SERVICE RD.-D-



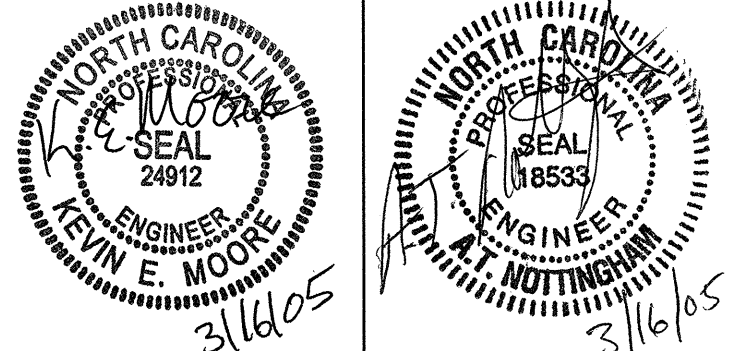
PROJECT REFERENCE NO. R-2552AB SHEET NO. 33

ROADWAY DESIGN ENGINEER HYDRAULICS ENGINEER



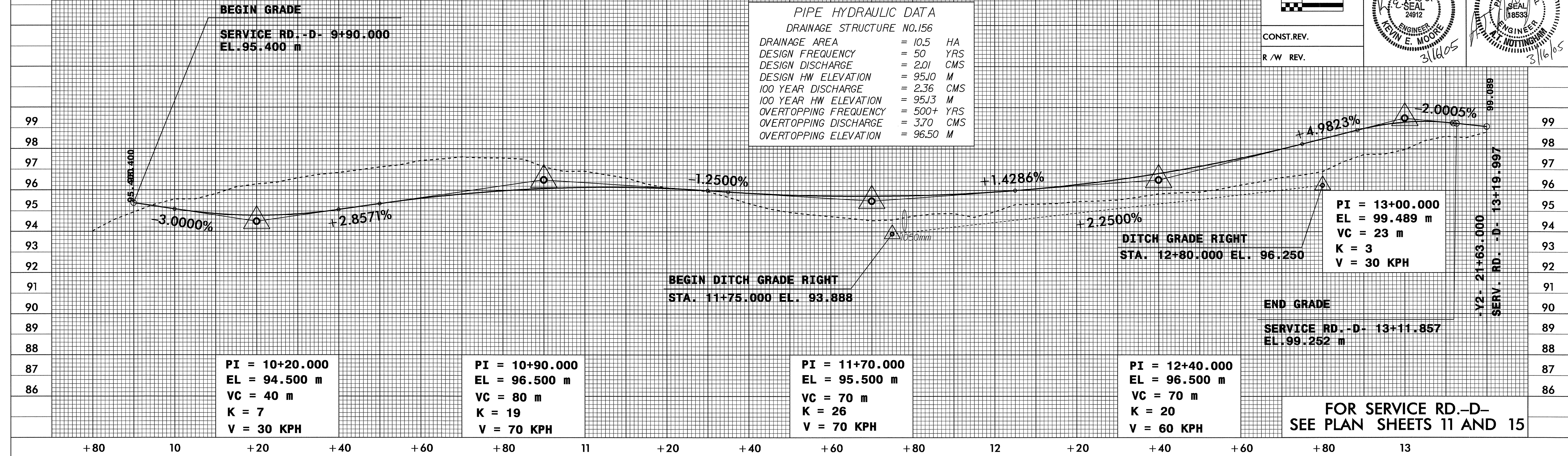
CONST.REV.

R /W REV.

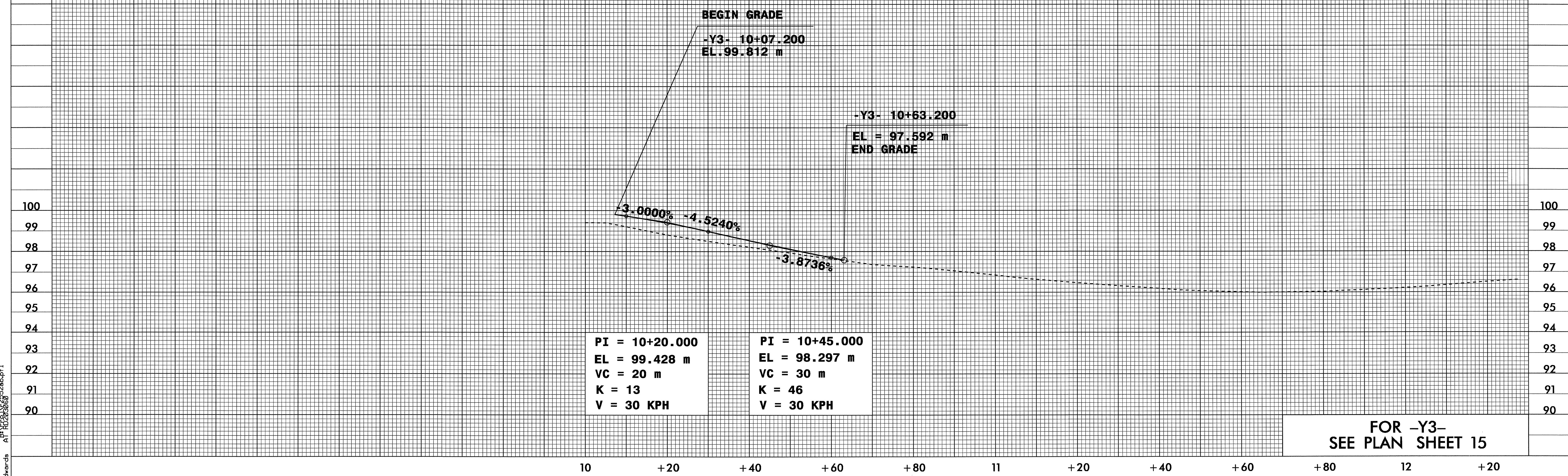


**PIPE HYDRAULIC DATA**  
DRAINAGE STRUCTURE NO.156

DRAINAGE AREA	= 10.5	HA
DESIGN FREQUENCY	= 50	YRS
DESIGN DISCHARGE	= 2.01	CMS
DESIGN HW ELEVATION	= 95.10	M
100 YEAR DISCHARGE	= 2.36	CMS
100 YEAR HW ELEVATION	= 95.13	M
OVERTOPPING FREQUENCY	= 500+	YRS
OVERTOPPING DISCHARGE	= 3.70	CMS
OVERTOPPING ELEVATION	= 96.50	M



# GOVERNMENT RD. -Y3-



13-JAN-2005 11:03 HEchwarda AT 10:20:36 2552ab.p1