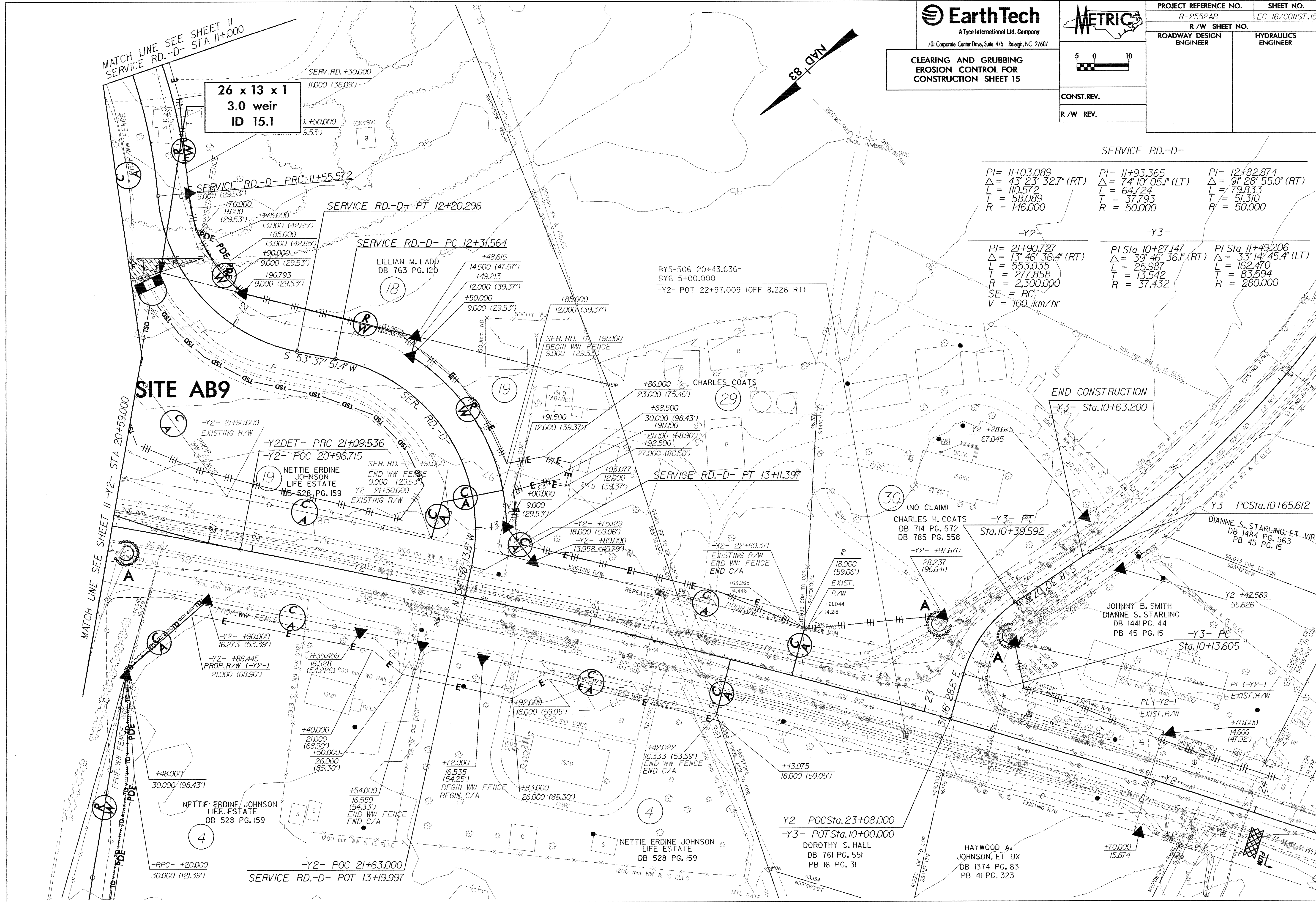


PROJECT REFERENCE NO. R-2552AB		SHEET NO. EC-16/CONST.15
R/W SHEET NO.		
ROADWAY DESIGN ENGINEER	HYDRAULICS ENGINEER	
CONST. REV.		
R/W REV.		

**CLEARING AND GRUBBING  
 EROSION CONTROL FOR  
 CONSTRUCTION SHEET 15**



SERVICE RD.-D-

PI = 11+03.089 $\Delta = 43^\circ 23' 32.7''$ (RT) L = 110.572 T = 58.089 R = 146.000	PI = 11+93.365 $\Delta = 74^\circ 10' 05.1''$ (LT) L = 64.724 T = 37.793 R = 50.000	PI = 12+82.874 $\Delta = 9^\circ 28' 55.0''$ (RT) L = 79.833 T = 51.310 R = 50.000
---	---	--

-Y2- PI = 21+90.727 $\Delta = 13^\circ 46' 36.4''$ (RT) L = 553.035 T = 277.858 R = 2,300.000 SE = RC V = 100 km/hr	-Y3- PI Sta 10+27.147 $\Delta = 39^\circ 46' 36.1''$ (RT) L = 25.987 T = 13.542 R = 37.432	PI Sta 11+49.206 $\Delta = 33^\circ 14' 45.4''$ (LT) L = 162.470 T = 83.594 R = 280.000
--	---	---

MATCH LINE SEE SHEET II  
 SERVICE RD.-D- STA II+000

**26 x 13 x 1  
 3.0 weir  
 ID 15.1**

**SITE AB9**

MATCH LINE SEE SHEET II -Y2- STA 20+59.000

-Y2- 21+90.000  
 EXISTING R/W

-Y2DET- PRC 21+09.536  
 -Y2- POC 20+96.715

NETTIE ERDINE JOHNSON LIFE ESTATE  
 DB 528 PG. 159

-Y2- +90.000  
 16.273 (53.39')

-Y2- +86.445  
 PROP. R/W (-Y2-)  
 21.000 (68.90')

NETTIE ERDINE JOHNSON LIFE ESTATE  
 DB 528 PG. 159

-RPC- +20.000  
 30.000 (121.39')

-Y2- POC 21+63.000  
 SERVICE RD.-D- POT 13+19.997

SERVICE RD.-D- PT 12+20.296

SERVICE RD.-D- PC 12+31.564

LILLIAN M. LADD  
 DB 763 PG. 120

BY5-506 20+43.636=  
 BY6 5+00.000  
 -Y2- POT 22+97.009 (OFF 8.226 RT)

SERV. RD.-D- +91.000  
 BEGIN WW FENCE  
 9.000 (29.53')

CHARLES COATS  
 DB 714 PG. 572  
 DB 785 PG. 558

SERVICE RD.-D- PT 13+11.397

CHARLES H. COATS  
 DB 714 PG. 572  
 DB 785 PG. 558

-Y3- PT  
 Sta. 10+39.592

END CONSTRUCTION  
 -Y3- Sta. 10+63.200

-Y3- PCSta. 10+65.612  
 DIANNE S. STARLING, ET VIR  
 DB 1484 PG. 563  
 PB 45 PG. 15

JOHNNY B. SMITH  
 DIANNE S. STARLING  
 DB 1441 PG. 44  
 PB 45 PG. 15

-Y3- PC  
 Sta. 10+13.605

PL (-Y2-)  
 EXIST. R/W

PL (-Y2-)  
 EXIST. R/W

-Y2- POCSta. 23+08.000  
 -Y3- POTSta. 10+00.000

DOROTHY S. HALL  
 DB 761 PG. 551  
 PB 16 PG. 31

HAYWOOD A. JOHNSON, ET UX  
 DB 1374 PG. 83  
 PB 41 PG. 323