

**GRADING AND DRAINAGE  
EROSION CONTROL FOR  
CONSTRUCTION SHEET 9**

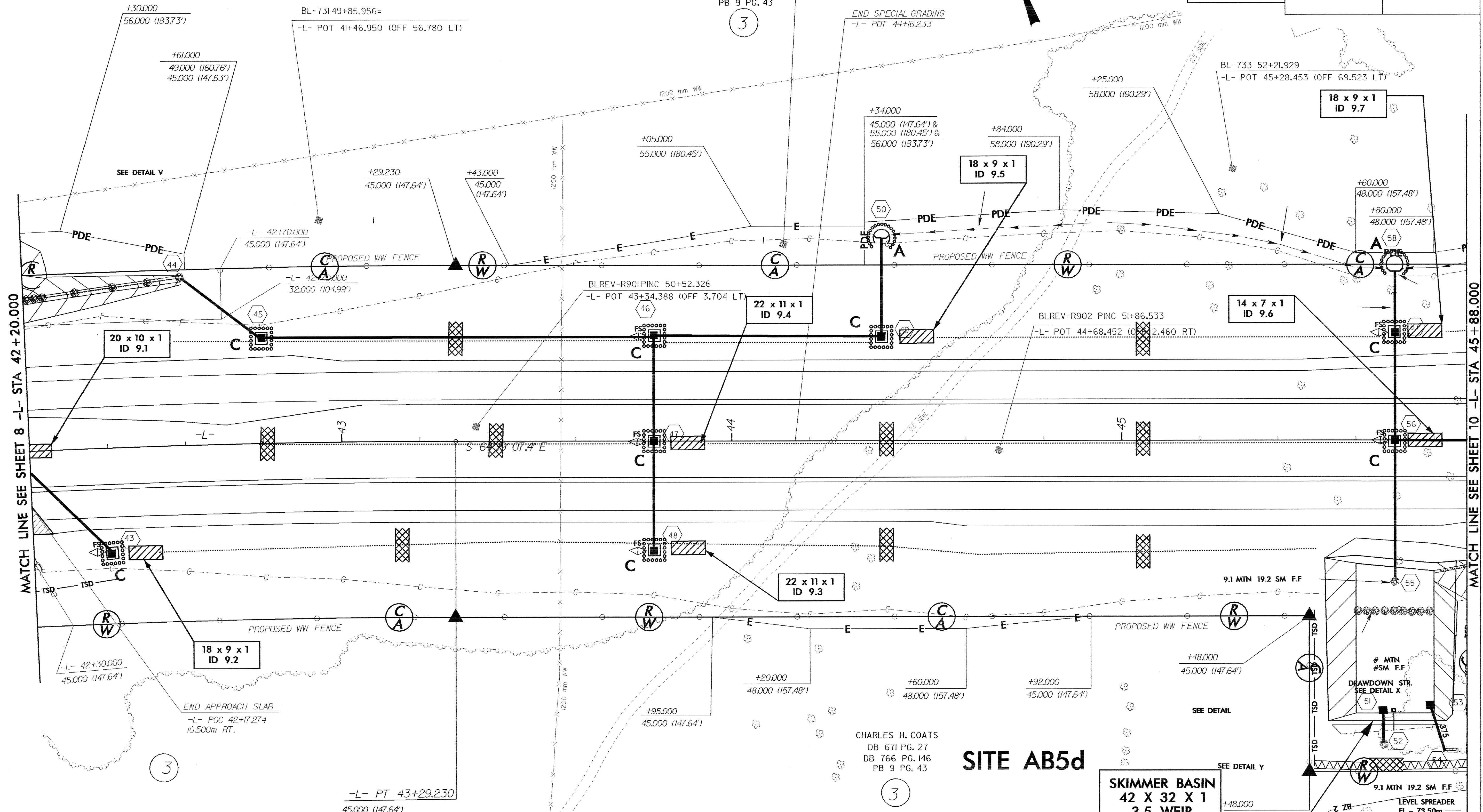
CONST. REV.  
R/W REV.

PROJECT REFERENCE NO. R-2552AB	SHEET NO. EC-22/CONST.9
R/W SHEET NO.	
ROADWAY DESIGN ENGINEER	HYDRAULICS ENGINEER

-L-  
 $PI = 38+81.623$   
 $\Delta = 20' 44" 47.5" (RT)$   
 $L = 905.237$   
 $T = 457.630$   
 $R = 2,500.000$   
 $SE = .03$   
 $V_{des.} = 110 \text{ km/hr}$

CHARLES H. COATS  
 DB 671 PG. 27  
 DB 766 PG. 146  
 PB 9 PG. 43

END SPECIAL GRADING  
 -L- POT 44+16.233



**SITE AB5d**

**CONSTRUCT SKIMMER BASIN TO ALLOW FOR  
CONVERSION TO HAZARDOUS SPILL BASIN  
AFTER CONSTRUCTION IS COMPLETE.**

**SKIMMER BASIN  
42 X 32 X 1  
3.5 WEIR  
50mm SKIMMER  
W/BAFFLES  
ID 9.7**