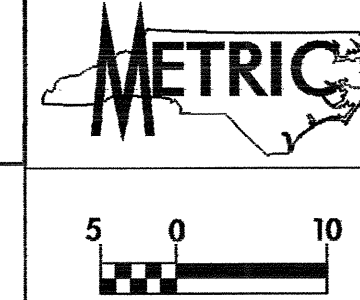
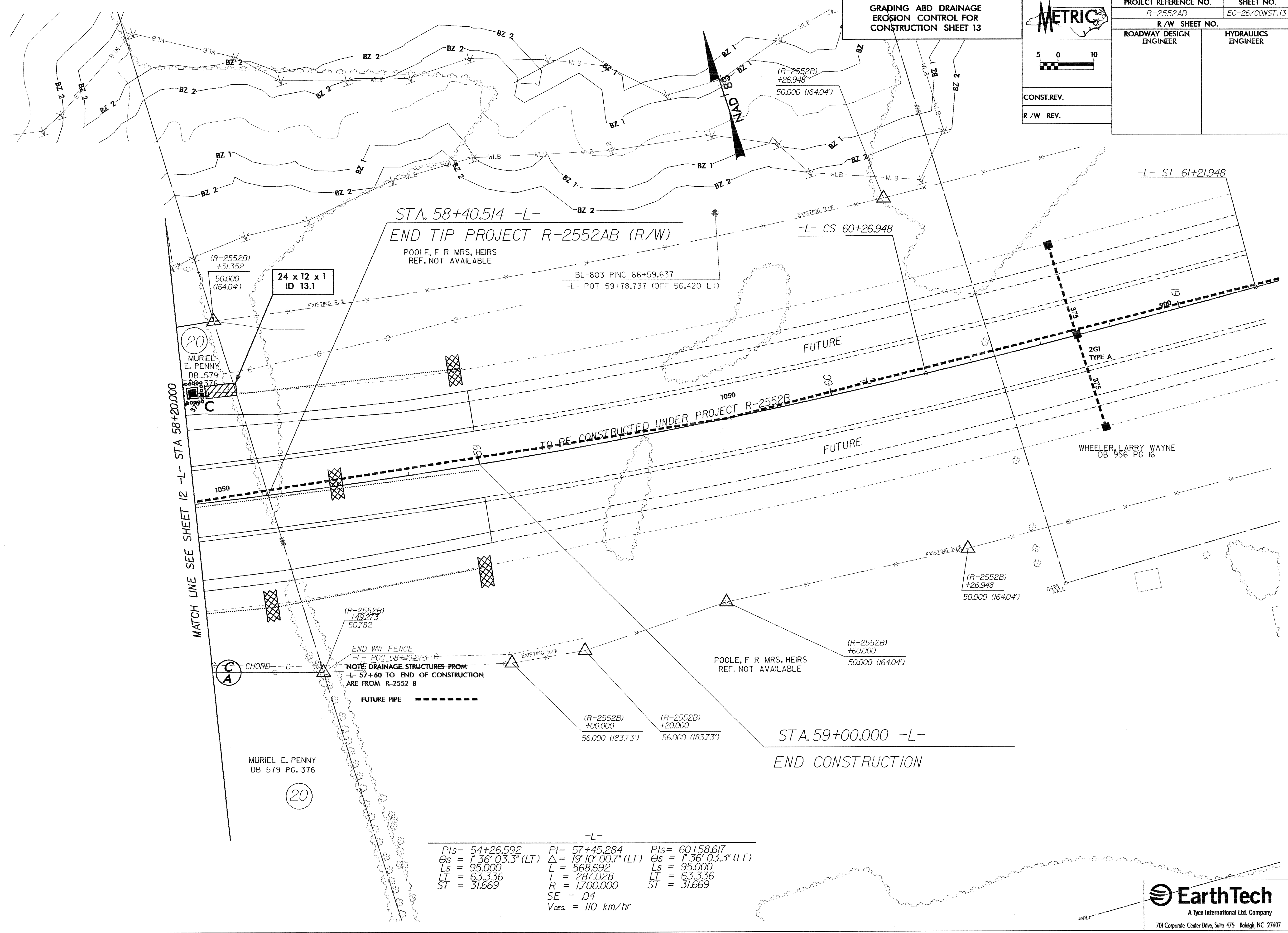


**GRADING AND DRAINAGE
EROSION CONTROL FOR
CONSTRUCTION SHEET 13**



PROJECT REFERENCE NO. R-2552AB	SHEET NO. EC-26/CONST.13
R/W SHEET NO.	HYDRAULICS ENGINEER
ROADWAY DESIGN ENGINEER	
CONST. REV.	
R/W REV.	



STA. 58+40.514 -L-
END TIP PROJECT R-2552AB (R/W)
POOLE, F R MRS, HEIRS
REF. NOT AVAILABLE

-L- ST 61+21.948

-L- CS 60+26.948

BL-803 PINC 66+59.637
-L- POT 59+78.737 (OFF 56.420 LT)

MATCH LINE SEE SHEET 12 -L- STA 58+20.000

24 x 12 x 1
ID 13.1

(R-2552B)
+31.352
50.000 (164.04')

(20)
MURIEL E. PENNY
DB 579
PG 376

WHEELER, LARRY WAYNE
DB 956 PG 16

(R-2552B)
+49.273
50.782
END WW FENCE
-L- POC 58+49.273 -C
NOTE: DRAINAGE STRUCTURES FROM
-L- 57+60 TO END OF CONSTRUCTION
ARE FROM R-2552 B

MURIEL E. PENNY
DB 579 PG. 376

(20)

(R-2552B)
+60.000
50.000 (164.04')

STA. 59+00.000 -L-
END CONSTRUCTION

-L-

PIs = 54+26.592	PI = 57+45.284	PIs = 60+58.617
Os = 1° 36' 03.3" (LT)	Δ = 19° 10' 00.7" (LT)	Os = 1° 36' 03.3" (LT)
Ls = 95.000	L = 568.692	Ls = 95.000
LT = 63.336	T = 287.028	LT = 63.336
ST = 31.669	R = 1,700.000	ST = 31.669
	SE = .04	
	V _{DES.} = 110 km/hr	