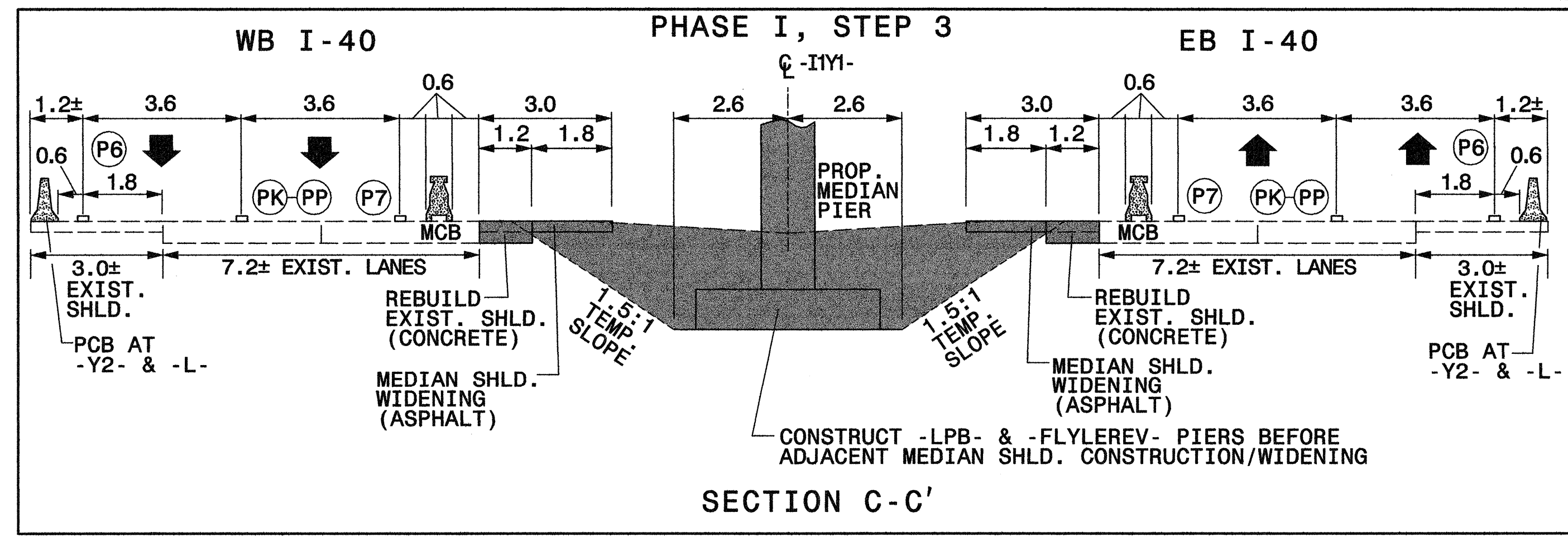


MATCHLINE STA. 10+80 -FLYLWREV-
SEE SHEET TCP-5



PROJ. REFERENCE NO. R-2552AA&AB SHEET NO. TCP-4

Plans prepared by:
KO & ASSOCIATES, P.C.
Consulting Engineers
1011 SCHAUB DR., SUITE #202
RALEIGH, N.C. 27606
For Division of Highways



(PHASE I, STEP 2 CONTINUED FROM TCP-3)

AREA 4

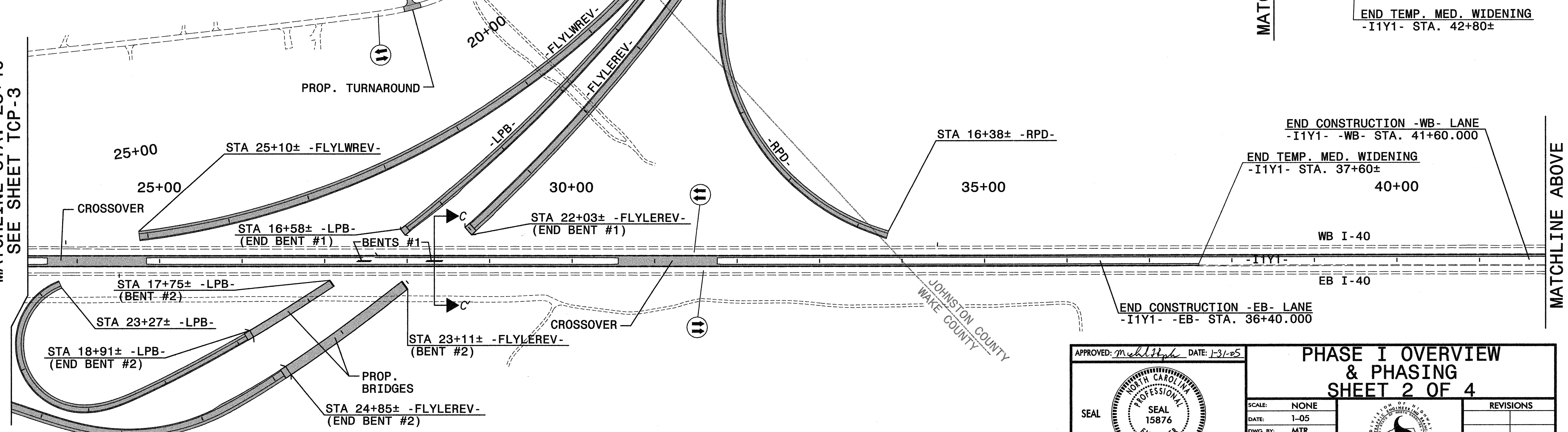
AWAY FROM TRAFFIC, BEGIN CONSTRUCTION OF PROPOSED US 70 BYPASS BRIDGES OVER SWIFT CREEK AND AUSTIN POND (SEE SHEETS TCP-5 & 6).

AWAY FROM TRAFFIC, BEGIN PROPOSED CONSTRUCTION OF THE FOLLOWING UP TO BUT NOT INCLUDING THE FINAL LAYER OF SURFACE COURSE (SEE SHEETS TCP-3 THRU 6):

- LREV- STA 11+05± TO -L- STA 20+40±
- L- STA 22+40± TO STA 27+30±
- L- STA 27+90± TO STA 49+00±
- L- STA 53+40± TO STA 59+00±
- FLYLWREV- STA 10+00± TO STA 13+40±
- FLYLWREV- STA 15+40± TO STA 25+10±
- FLYLEREV- STA 10+00± TO STA 13+40±
- FLYLEREV- STA 15+40± TO STA 22+03± (END BENT #1)
- FLYLEREV- STA 24+85± (END BENT #2) TO STA 32+60±
- LPB- STA 10+00± TO STA 16+58± (END BENT #1)
- LPB- STA 18+91± (END BENT #2) TO STA 23+27±
- RPD- STA 10+00± TO STA 16+38±
- RP-A FROM -L- TO STA 14+70±
- RP-B FROM STA 12+00± TO STA 15+85±
- RP-C FROM -L- TO STA 14+70±
- RP-D FROM -L- TO STA 14+00±

(PHASE I CONTINUED ON TCP-6)

MATCHLINE STA. 23+40
SEE SHEET TCP-3



APPROVED: *meh...* DATE: 1-31-05

SEAL
NORTH CAROLINA
PROFESSIONAL
ENGINEER
SEAL
15876
MICHAEL T. RZEPA

<p>PHASE I OVERVIEW & PHASING SHEET 2 OF 4</p>		REVISIONS	
SCALE: NONE	DATE: 1-05		
DWG. BY: MTR	DESIGN BY: MTR		
REVIEWED BY: MSA			

DATE\$
FILE\$