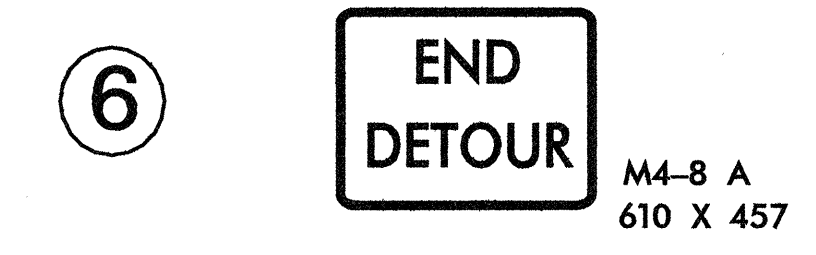
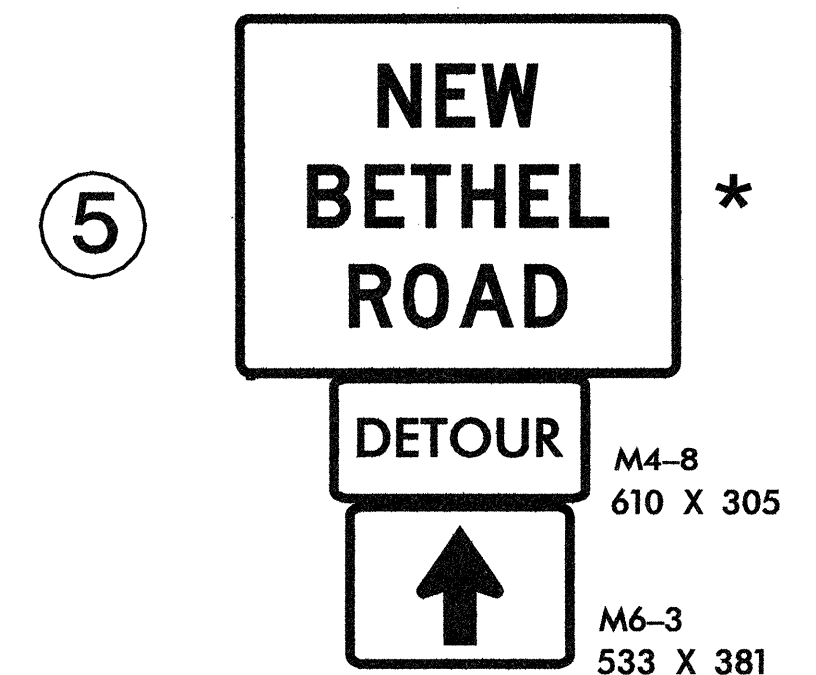
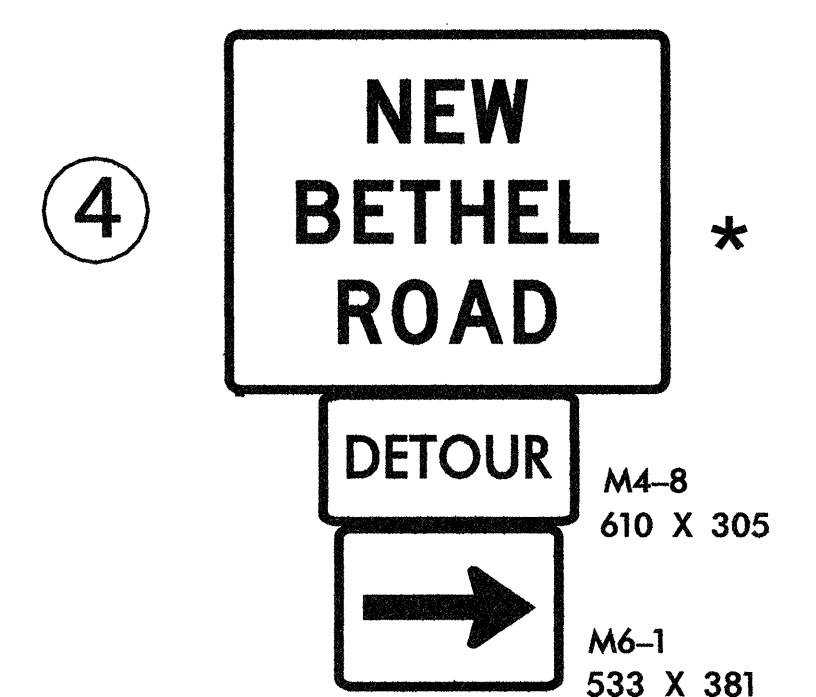
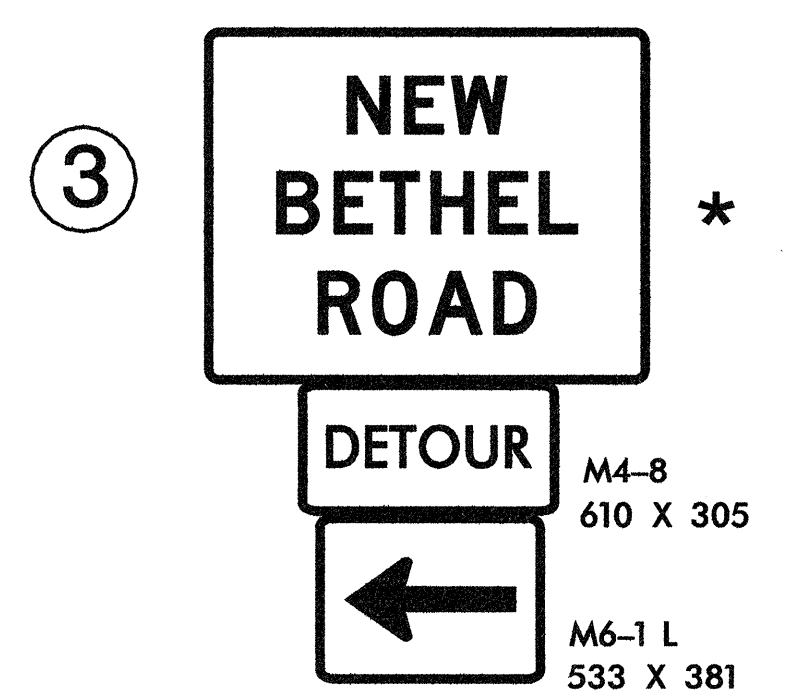
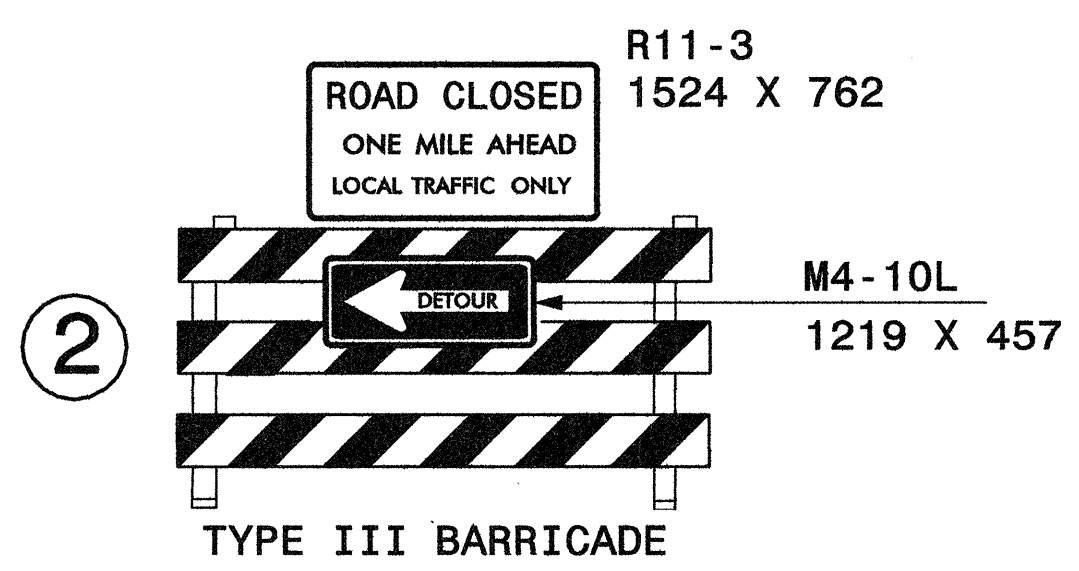
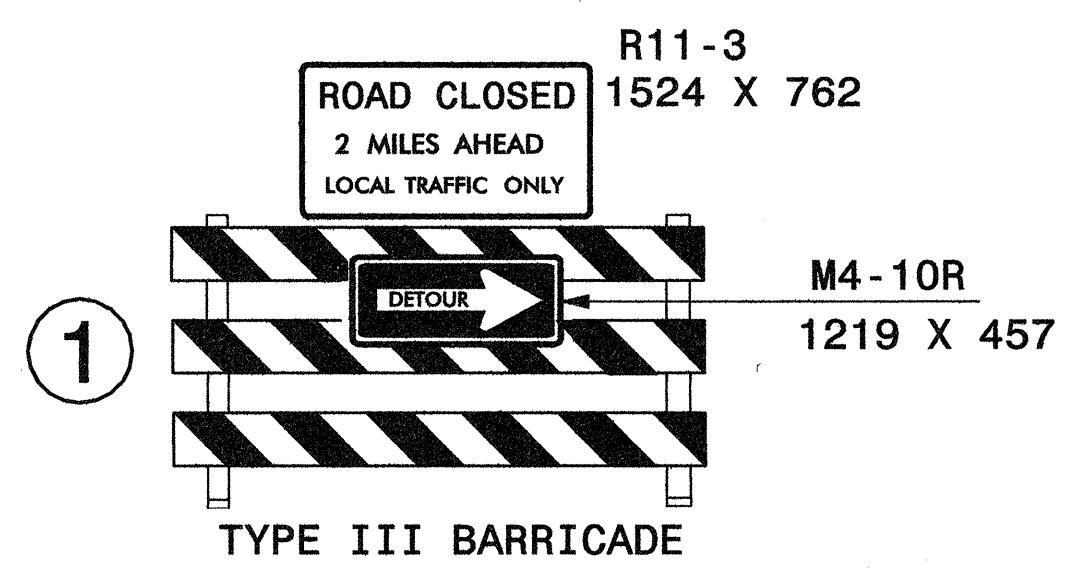
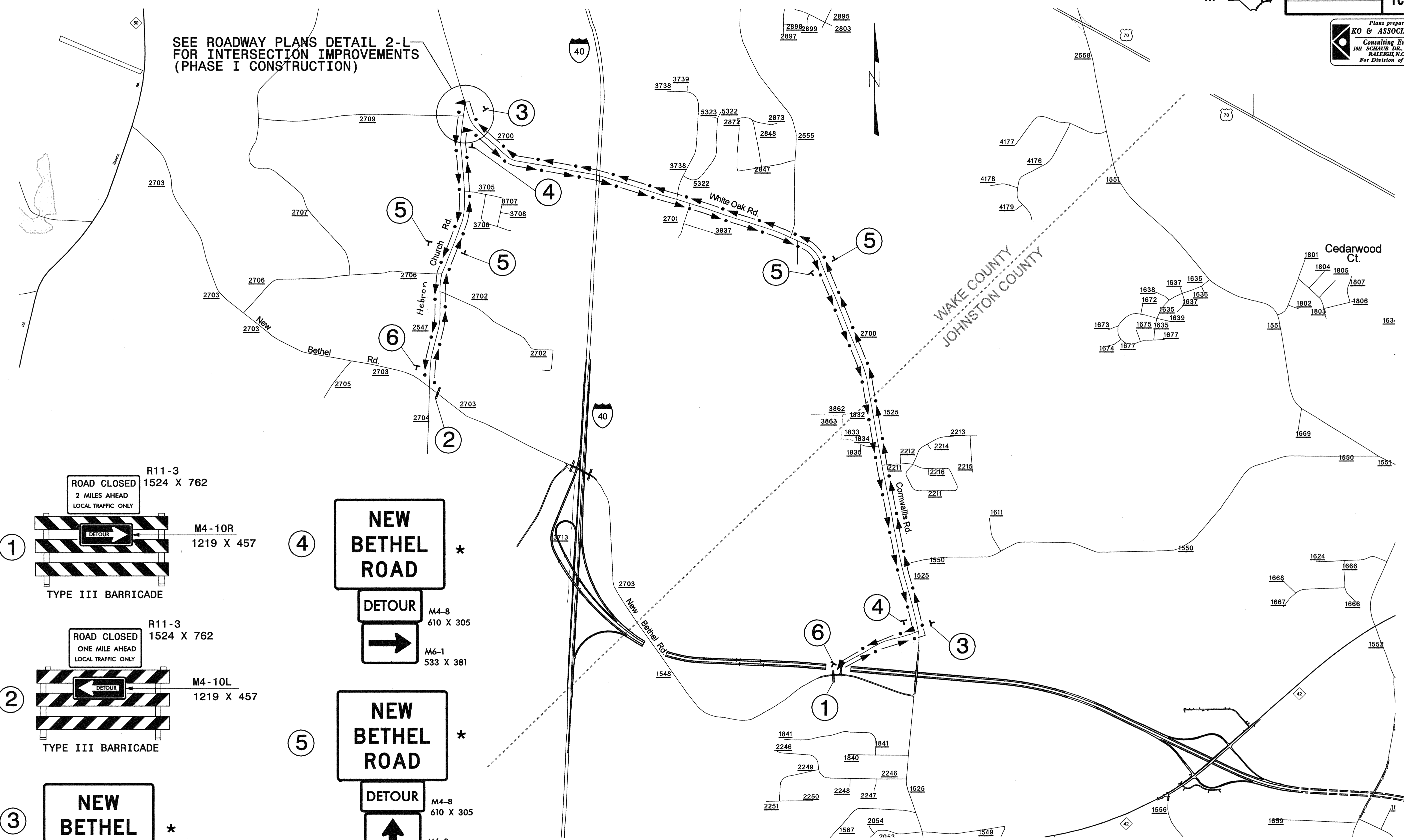




Plans prepared by:
KO & ASSOCIATES, P.C.
Consulting Engineers
1011 SCHAUH DR., SUITE #202
RALEIGH, N.C. 27606
For Division of Highways

SEE ROADWAY PLANS DETAIL 2-L
FOR INTERSECTION IMPROVEMENTS
(PHASE I CONSTRUCTION)



* SEE TCP-44 FOR
"NEW BETHEL ROAD"
SIGN DESIGN



APPROVED: *Michael T. Repp* DATE: 1-31-05

SEAL

NORTH CAROLINA
PROFESSIONAL
ENGINEER
MICHAEL T. REPP
15876

DETOUR FOR
NEW BETHEL RD. CLOSURE

SCALE: NONE
DATE: 1-05
DWG. BY: MTR
DESIGN BY: MTR
REVIEWED BY: MSA

REVISIONS

NO.	DESCRIPTION

CARD FILE

FILES \$
DATES \$