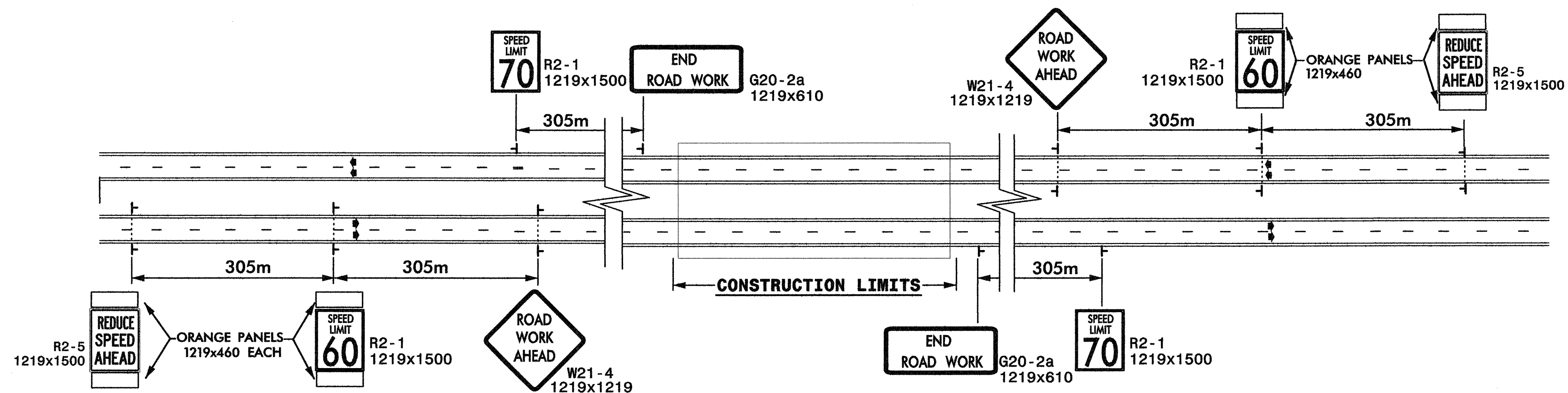


DETAIL A

SPEED REDUCTION DURING NON-LANE CLOSURES

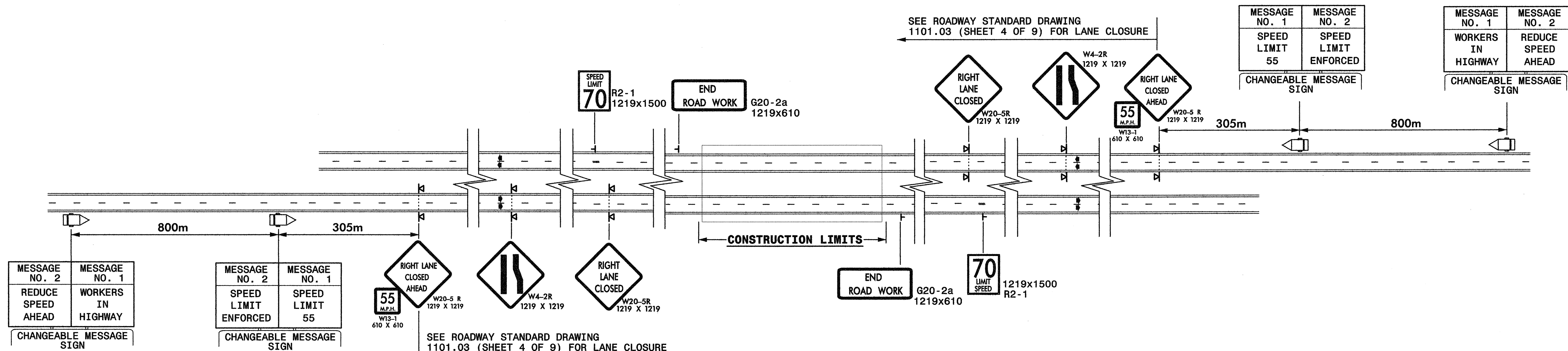
PROJ. REFERENCE NO. R-2552AA&AB	SHEET NO. TCP-39
------------------------------------	---------------------



STATE OF NORTH CAROLINA  
DEPT. OF TRANSPORTATION  
DIVISION OF HIGHWAYS  
RALEIGH, N.C.

DETAIL B

SPEED REDUCTION DURING LANE CLOSURES



GENERAL NOTES

- FOR UNDIVIDED AND TWO LANE-TWO WAY ROADWAYS, SIGNS ARE REQUIRED ONLY ON THE RIGHT SIDE OF THE ROADWAY.
- USE DETAIL A FOR SPEED REDUCTION DURING NON-LANE CLOSURES ON I-40.
- USE DETAIL B FOR SPEED REDUCTION DURING LANE CLOSURES ON I-40. WHEN USING DETAIL B, COVER SPEED REDUCTION AND SPEED PANELS IN DETAIL A.
- SEE SHEET TCP-37 AND TCP-38 FOR ALL OTHER WORK ZONE SIGNS SIZE AND SPACING OTHER THAN THE "REDUCE SPEED AHEAD" SIGN.

DETAIL DRAWING FOR  
WORK ZONE SIGNS  
"REDUCE SPEED AHEAD SIGN"

SHEET 1 OF 1

APPROVED: <i>MTR</i> DATE: 1-1-05	<p>DETAIL DRAWING FOR WORK ZONE SIGNS</p>	
SCALE: NONE		REVISIONS
DATE: 1-05		7-98 100
DWG. BY: MTR		10-98 500
DESIGN BY: MTR		12-99 0304
REVIEWED BY:	CADD FILE	