

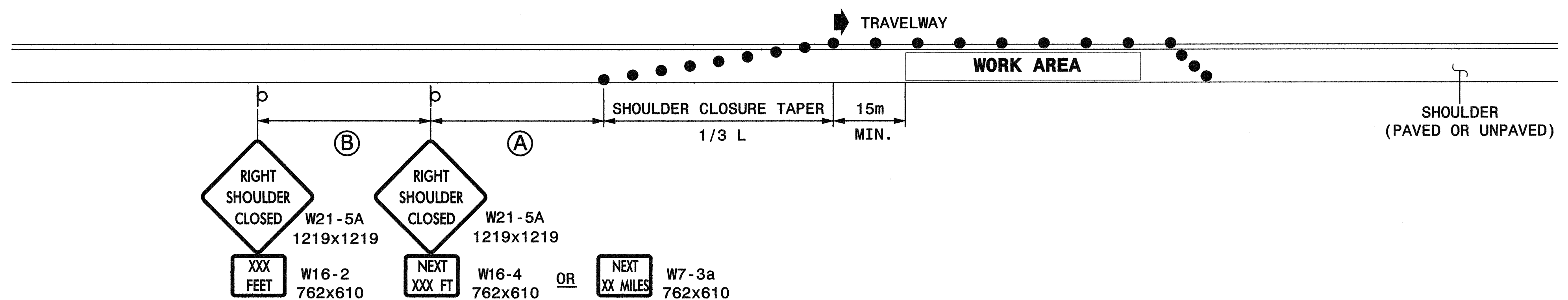


STATE OF NORTH CAROLINA  
DEPT. OF TRANSPORTATION  
DIVISION OF HIGHWAYS  
RALEIGH, N.C.

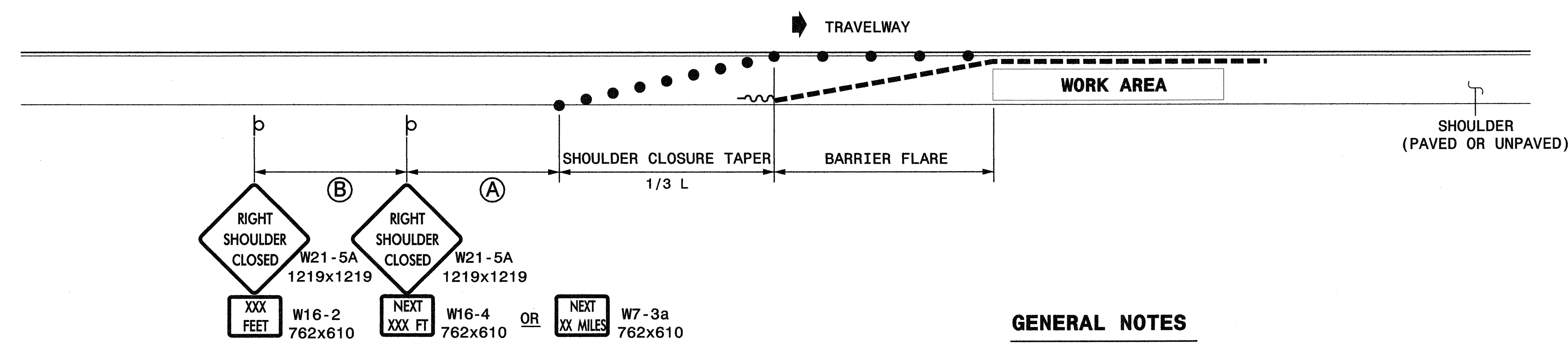
1-05

METRIC STANDARD DRAWING FOR  
TEMPORARY SHOULDER CLOSURES

### SHOULDER CLOSURES UTILIZING DRUMS



### SHOULDER CLOSURES UTILIZING TEMPORARY BARRIER



#### GENERAL NOTES

- PLACE SHOULDER CLOSURE SIGNS ON THE SAME SIDE AS THE SHOULDER THAT IS CLOSED.
- PLACE DRUMS IN THE SHOULDER TAPER AT THE MAXIMUM SPACING EQUAL IN METERS TO 1/3rd THE POSTED SPEED LIMIT (mph). THE MAXIMUM SPACING OF DRUMS ALONG THE WORK AREA AND BARRIER FLARE IS EQUAL IN METERS TO 2/3rds THE POSTED SPEED LIMIT (mph).
- FLARE THE APPROACH END OF PORTABLE CONCRETE BARRIER BEYOND THE SHOULDER AND USE A CRASH CUSHION FOR PROTECTION IF THE EXPOSED END OF THE BARRIER IS WITHIN THE "CLEAR ZONE".
- USE STATIONARY SIGNS FOR LONG TERM OPERATIONS (LONGER THAN 3 DAYS).
- REFER TO STD. 1101.11 SHEETS 1, 3, & 4, FOR "L" DISTANCE, BARRIER FLARE RATES, AND SIGN SPACING.

#### LEGEND

- ~ TEMPORARY CRASH CUSHION
- - - PORTABLE CONCRETE BARRIER
- DRUM
- ⊥ STATIONARY OR PORTABLE SIGN
- ➔ DIRECTION OF TRAFFIC FLOW

SHEET 1 OF 1  
**1101D04**

SHEET 1 OF 1  
**1101D04**

STATE OF NORTH CAROLINA  
DEPT. OF TRANSPORTATION  
DIVISION OF HIGHWAYS  
RALEIGH, N.C.

METRIC STANDARD DRAWING FOR  
TEMPORARY SHOULDER CLOSURES

APPROVED: <i>Michael Stephens</i> DATE: 1-31-05	<b>REPLACEMENT DETAIL FOR RSD 1101.04</b>	
	SCALE: NONE	
	DATE: 11/04	
	DWG. BY: MMM	
	DESIGN BY: MMM	
REVIEWED BY: MMM	REVISIONS	