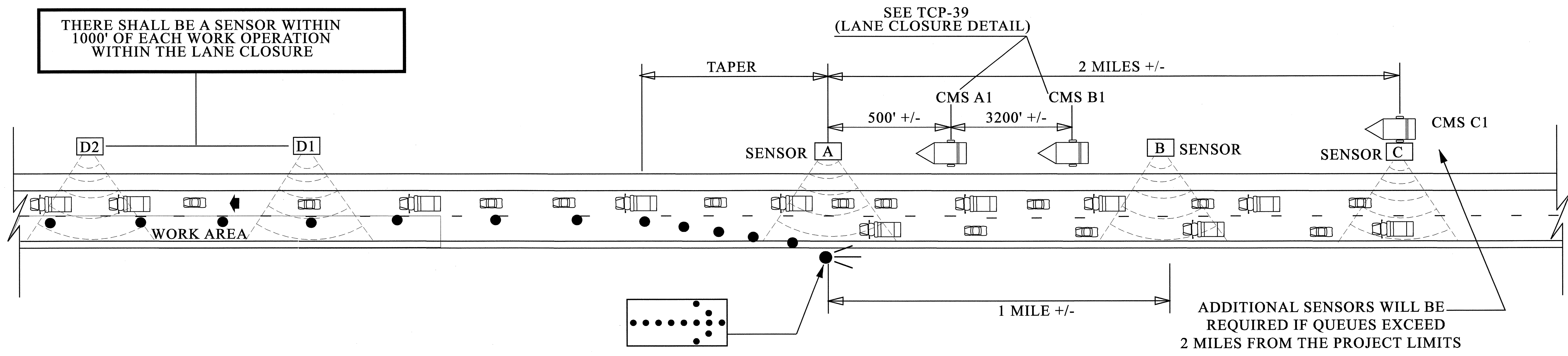


# SMART WORK ZONE SET-UP FOR EB & WB I-40

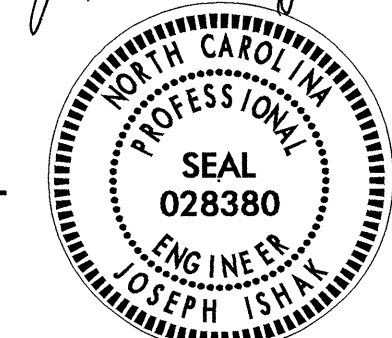
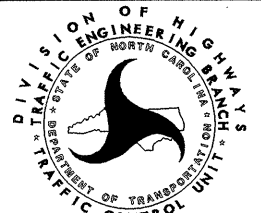
THERE SHALL BE A SENSOR WITHIN 1000' OF EACH WORK OPERATION WITHIN THE LANE CLOSURE



## NOTES:

- SEE TCP-47 FOR CMS C1 MESSAGING
- SEE TCP-39 FOR CMS A1 AND B1 MESSAGING
- THE SAME SIGNING WILL APPLY FOR BOTH LEFT AND RIGHT LANE CLOSURES.
- THE SAME SIGNING WILL APPLY FOR BOTH DIRECTIONS ON I-40
- CMSs A1 AND B1 ARE MANUALLY ACTIVATED AND ARE NOT A PART OF THE SMART WORK ZONE SYSTEM
- ACTIVATE CMSs A1 AND B1 ONLY WHEN LANE CLOSURES AND SPEED REDUCTION ARE IN EFFECT ON EITHER DIRECTION OF I-40
- COVER EXISTING SPEED LIMIT SIGNS WHEN CMSs A1 AND B1 ARE ACTIVATED
- DELAYS AND OR QUEUE LENGTH TO BE CALCULATED BY COMPUTER SOFTWARE

03-MAR-2005 16:02  
\\ets-cgts01\TCU\Tcu\59group-j\ishak\2552aasmart\wz\finalsmart\work zone on r-2552.dgn  
malawandos AT TELC24250

APPROVED: <i>Joseph Istaitieh</i> DATE: 3/4/05 	<b>SMART WORK ZONE SET-UP FOR EAST AND WESTBOUND I-40 DETAIL 1 OF 2</b>	<table border="1" style="width: 100%; border-collapse: collapse;"> <thead> <tr> <th colspan="2">REVISIONS</th> </tr> </thead> <tbody> <tr><td> </td><td> </td></tr> <tr><td> </td><td> </td></tr> <tr><td> </td><td> </td></tr> <tr><td> </td><td> </td></tr> </tbody> </table>	REVISIONS										
REVISIONS													
<table border="1" style="width: 100%; border-collapse: collapse;"> <tr><td>SCALE:</td><td>NONE</td></tr> <tr><td>DATE:</td><td>2/05</td></tr> <tr><td>DWG. BY:</td><td>J1</td></tr> <tr><td>DESIGN BY:</td><td>J1</td></tr> <tr><td>REVIEWED BY:</td><td>J1</td></tr> </table>	SCALE:	NONE	DATE:	2/05	DWG. BY:	J1	DESIGN BY:	J1	REVIEWED BY:	J1		<table border="1" style="width: 100%; border-collapse: collapse;"> <tr><td>CADD FILE</td></tr> </table>	CADD FILE
SCALE:	NONE												
DATE:	2/05												
DWG. BY:	J1												
DESIGN BY:	J1												
REVIEWED BY:	J1												
CADD FILE													