

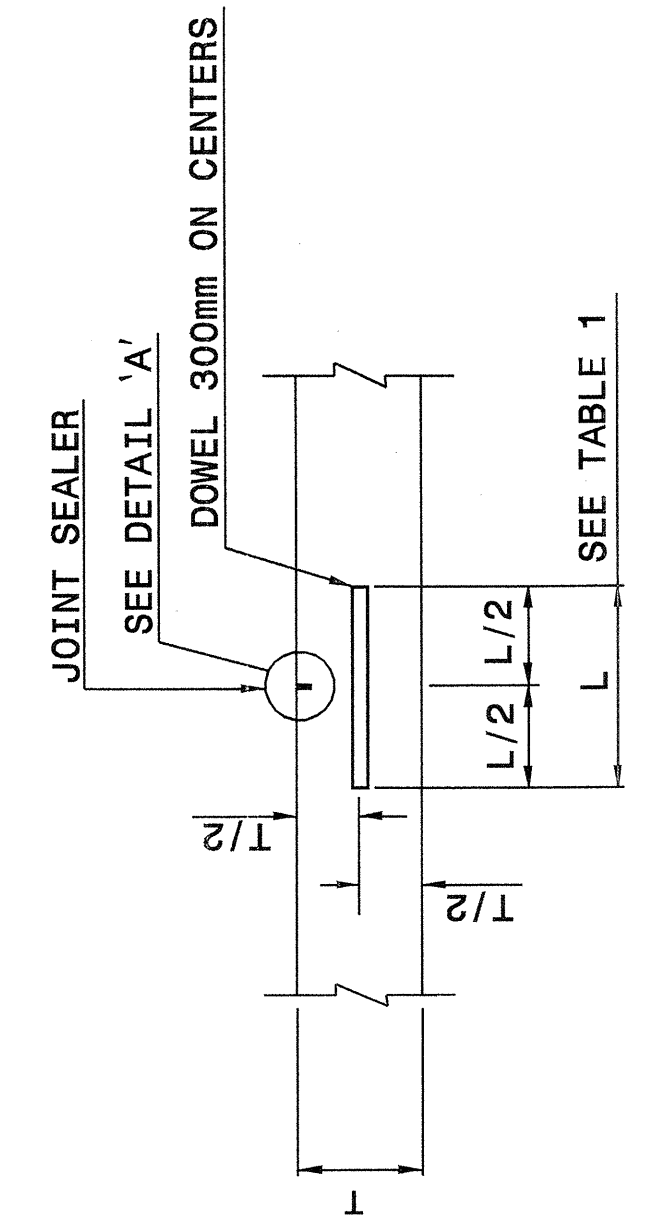


28-QCT-2004 13:49
 W:\Special Details\Drawings\Standards\02: Stds to Special Details\Metric\70001\0700a01m.dgn
 ericward A:\DSC12260

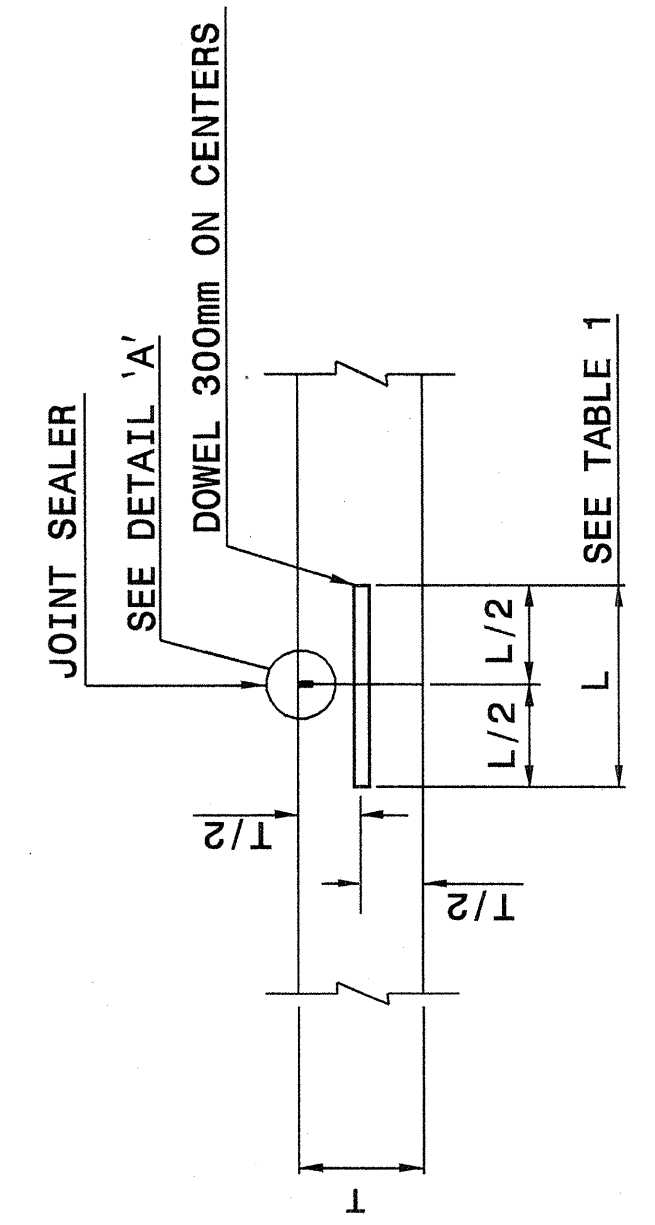
STATE OF NORTH CAROLINA
 DEPT. OF TRANSPORTATION
 DIVISION OF HIGHWAYS
 RALEIGH, N.C.

METRIC DETAIL DRAWING FOR
CONCRETE PAVEMENT JOINTS
 CONSTRUCTION AND CONTRACTION JOINTS

SHEET 1 OF 2
700D01



TRANSVERSE CONTRACTION JOINT



PLANNED TRANSVERSE CONSTRUCTION JOINT

- GENERAL NOTES:
- FORM TRANSVERSE CONTRACTION JOINTS BY SAWING WITH APPROVED EQUIPMENT.
 - SPACE TRANSVERSE CONTRACTION JOINTS AT INTERVALS OF 4.5m.
 - USE A DOWEL ASSEMBLY OR OTHER APPROVED DOWEL INSERTION TECHNIQUE IN ALL TRANSVERSE CONTRACTION JOINTS.
 - DOWEL ASSEMBLIES ARE COVERED IN DETAIL 700D03.
 - 20mm PER METER IS THE ALIGNMENT TOLERANCE FOR PLACEMENT OF DOWELS.
 - 6mm IS THE LOCATION TOLERANCE FOR DOWELS OR TIE BARS.
 - 3mm IS THE TOLERANCE IN DEPTH OF SAWING PAVEMENT JOINTS.
 - PROVIDE SMOOTH DOWEL BARS. PROVIDE DEFORMED TIE BARS.
 - SEAL ALL JOINTS WITH RUBBER ASPHALT JOINT SEALER IN THE PRESENCE OF THE ENGINEER.

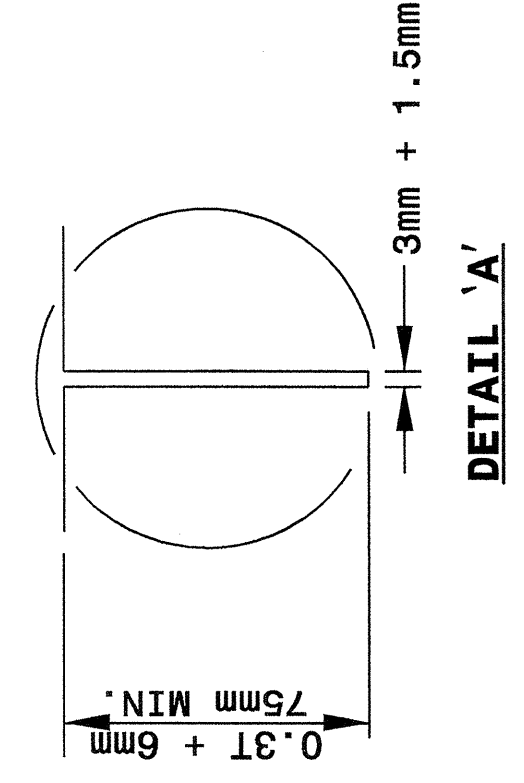


TABLE I - DOWEL BARS

SLAB THICKNESS	DOWEL BAR "D"	DOWEL LENGTH "L"
209mm OR LESS	25	350
210mm TO 249mm	29	400
250mm TO 279mm	32	450
280mm TO 299mm	35	450
300mm & ABOVE	38	450

Note:
 This drawing is dimensioned in millimeters unless otherwise depicted within the drawing.

STATE OF NORTH CAROLINA
 DEPT. OF TRANSPORTATION
 DIVISION OF HIGHWAYS
 RALEIGH, N.C.

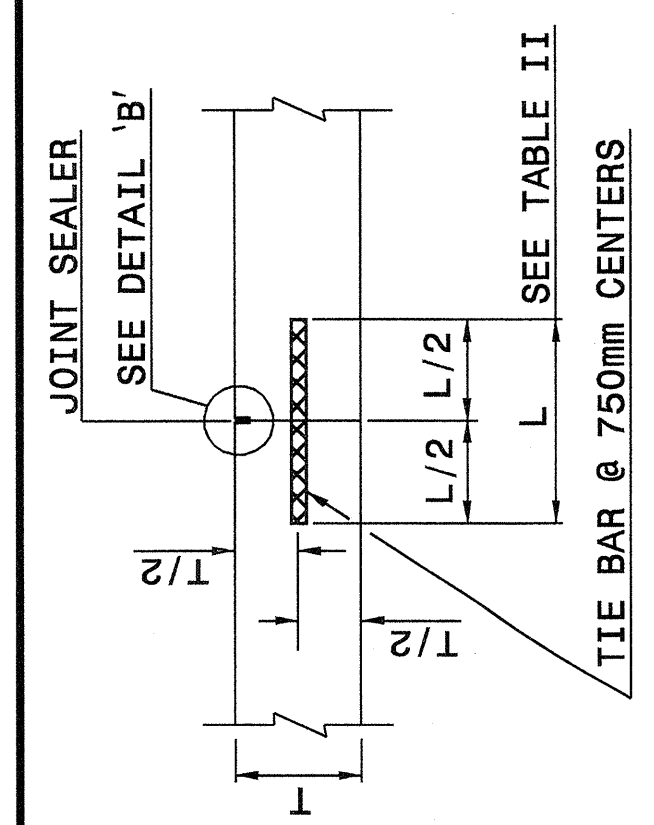
METRIC DETAIL DRAWING FOR
CONCRETE PAVEMENT JOINTS
 CONSTRUCTION AND CONTRACTION JOINTS

SHEET 1 OF 2
700D01

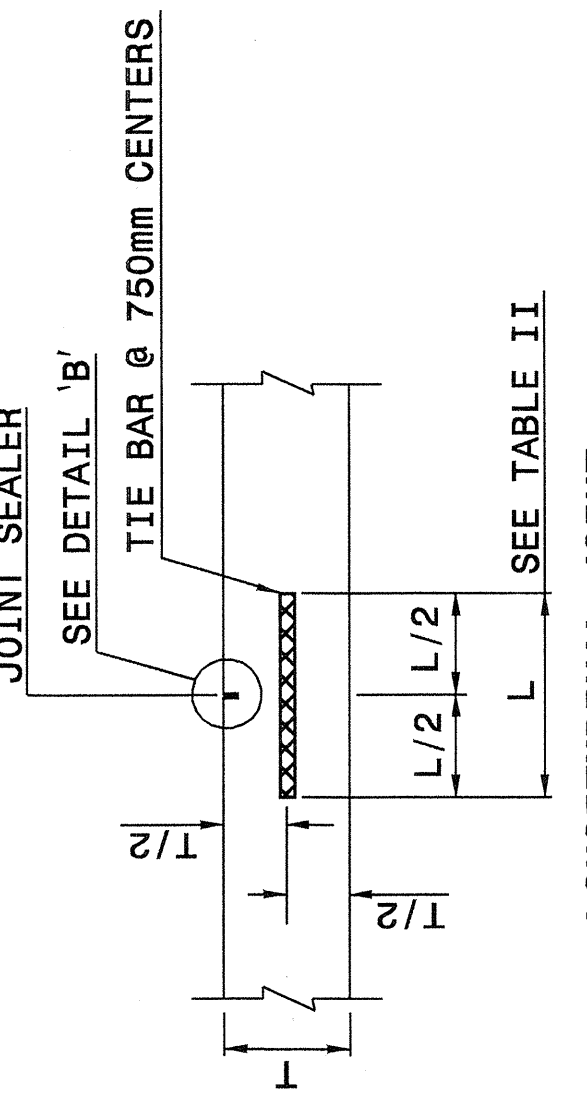
STATE OF NORTH CAROLINA
 DEPT. OF TRANSPORTATION
 DIVISION OF HIGHWAYS
 RALEIGH, N.C.

METRIC DETAIL DRAWING FOR
CONCRETE PAVEMENT JOINTS
 CONSTRUCTION AND CONTRACTION JOINTS

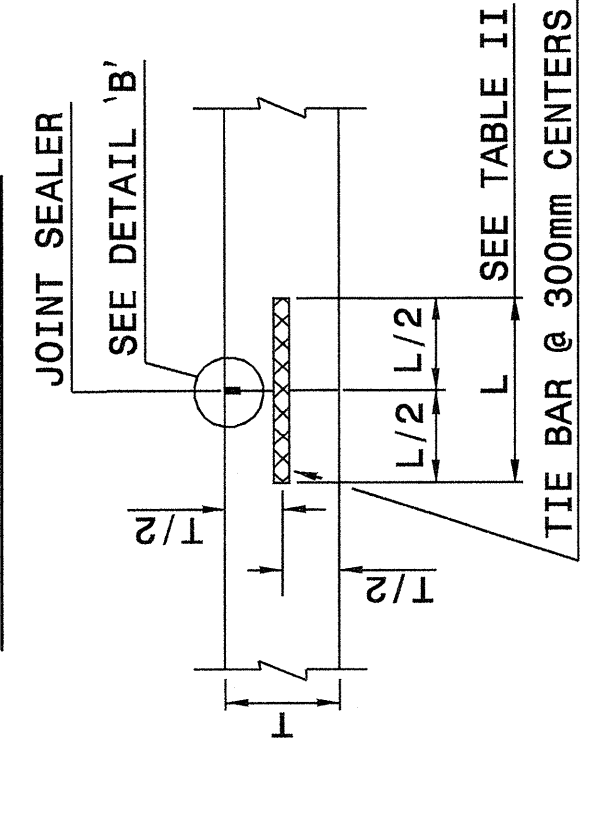
SHEET 2 OF 2
700D01



LONGITUDINAL CONSTRUCTION JOINT



LONGITUDINAL JOINT



EMERGENCY TRANSVERSE CONSTRUCTION JOINT

Note:
 This drawing is dimensioned in millimeters unless otherwise depicted within the drawing.

- GENERAL NOTES:
- CONSTRUCT TRANSVERSE CONSTRUCTION JOINTS AT THE END OF EACH DAY'S OPERATION (PLANNED JOINT) OR WHEN THE PLACING OF CONCRETE IS SUSPENDED FOR MORE THAN 30 MINUTES (EMERGENCY JOINT).
 - USE AN APPROVED HEADER AT EMERGENCY JOINTS STD. DWG. 700.04 AND DESIGNED TO PERMIT THE PLACEMENT OF AND CORRECTLY HOLD IN PLACE TIE BARS.
 - LOCATE PLANNED TRANSVERSE CONSTRUCTION JOINTS AT THE SPACING REQUIRED FOR CONTRACTION JOINTS. USE AN APPROVED METHOD OF INSTALLING DOWELS IN ALL PLANNED TRANSVERSE CONSTRUCTION JOINTS.
 - DO NOT LOCATE EMERGENCY TRANSVERSE CONSTRUCTION JOINTS LESS THAN 1.8m FROM ANY CONTRACTION JOINT OR PLANNED CONSTRUCTION JOINT.
 - DO NOT PLACE TIE BARS IN LONGITUDINAL JOINTS WITHIN 400mm OF A TRANSVERSE JOINT.
 - SEAL ALL JOINTS WITH RUBBER ASPHALT JOINT SEALER IN THE PRESENCE OF THE ENGINEER.

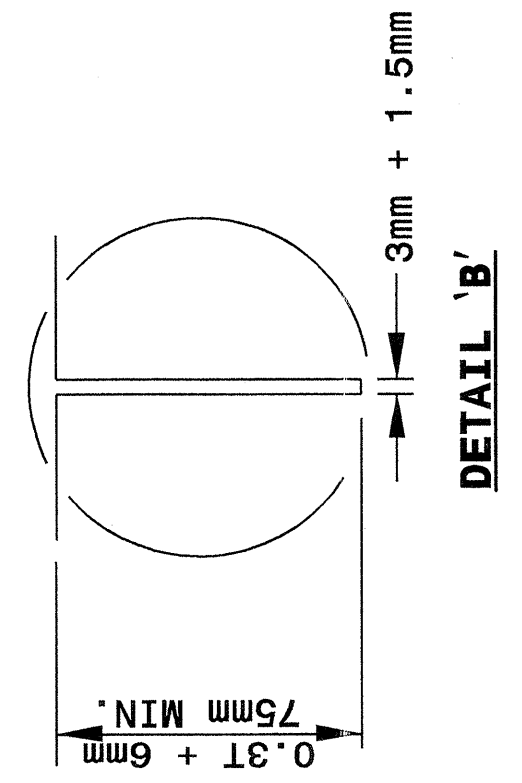


TABLE II - TIE BARS

SLAB THICKNESS	TIE BAR DIA. "D"	TIE BAR LENGTH "L"
220mm OR LESS	13	750
230mm OR ABOVE	16	750

PROJECT SERVICES UNIT
 STANDARDS AND SPECIAL DESIGN
 Office 919-250-4128 FAX 919-250-4119

SEE PLATE FOR TITLE

ORIGINAL BY: 2002 STANDARDS DATE: 01-15-02
 MODIFIED BY: E.E. WARD DATE: 09-15-04
 CHECKED BY: Pauls Date DATE: 11/18/04
 FILE SPEC.: stds/02stdstodetails/metric/700d01.dgn

