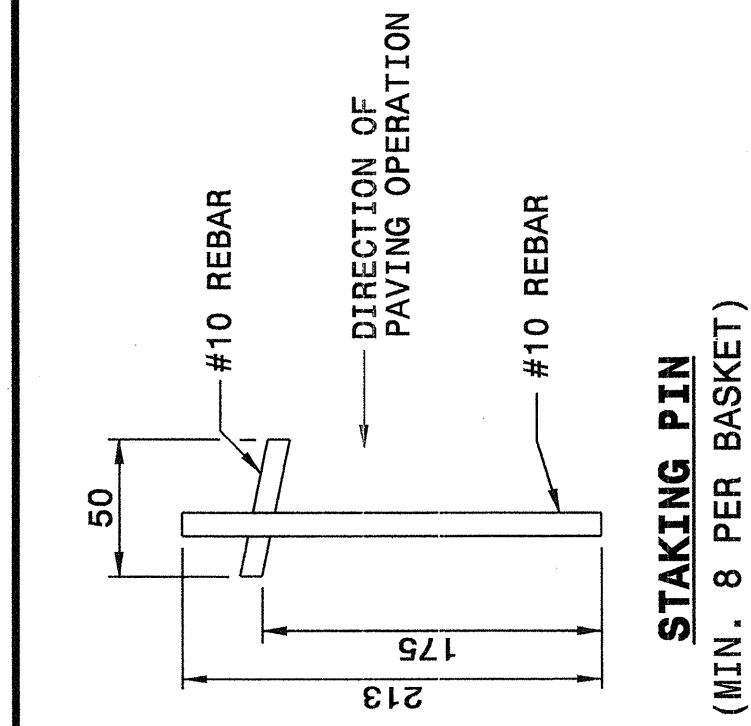


12-NOV-2004 14:08
 W:\Spc\Detail\Veri\forward\stda\02\stds to Special Details\metric\700003\0700d03m.dgn
 erforward AT 05212260

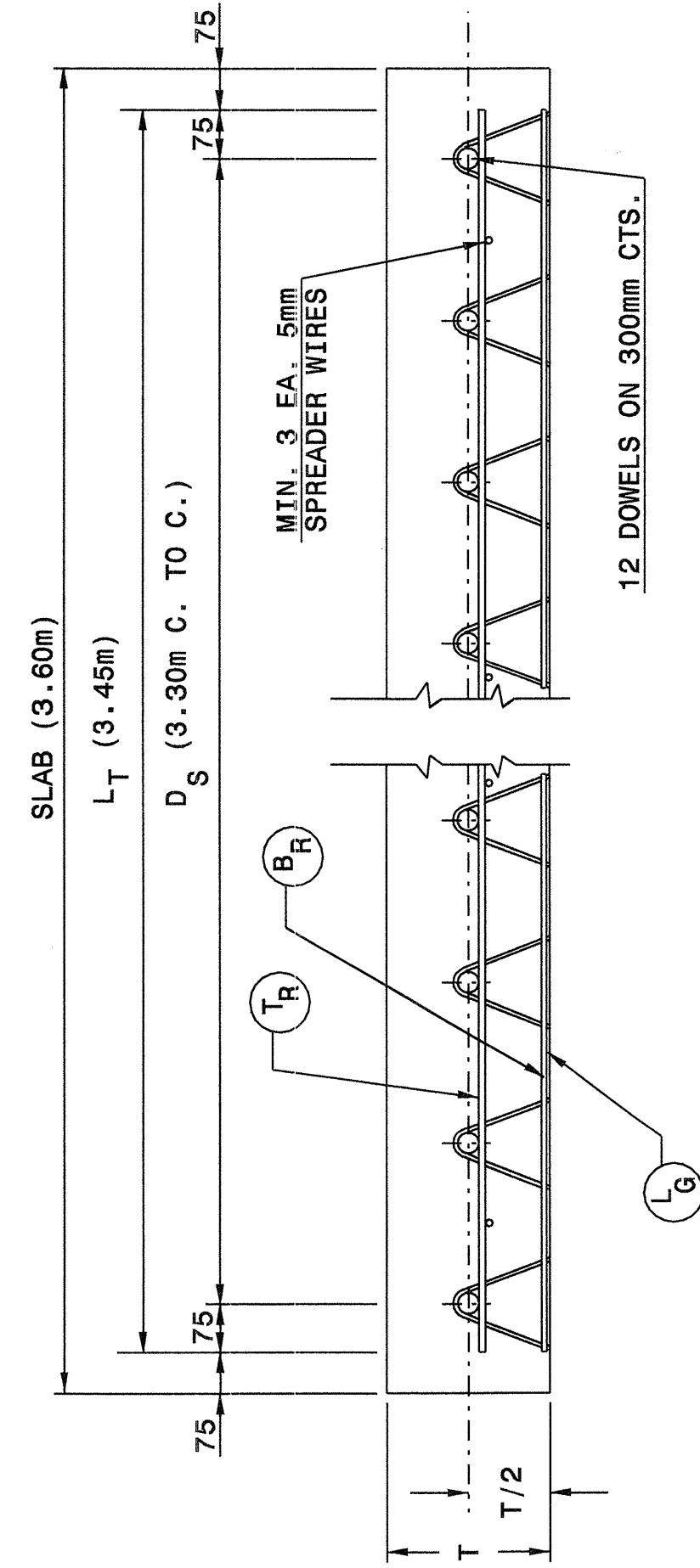
STATE OF
 NORTH CAROLINA
 DEPT. OF TRANSPORTATION
 DIVISION OF HIGHWAYS
 RALEIGH, N. C.

METRIC DETAIL DRAWING FOR
DOWEL ASSEMBLY

SHEET 1 OF 2
700D03



SLAB THICKNESS	"V" LEG ONLY WIRE GAGE		
	T _R	B _R	L _G
200mm OR LESS	7	7	7
210mm - 250mm	8	7	7
265mm & ABOVE	8	8	8



TYPICAL UNIT DIMENSIONS

STATE OF
 NORTH CAROLINA
 DEPT. OF TRANSPORTATION
 DIVISION OF HIGHWAYS
 RALEIGH, N. C.

METRIC DETAIL DRAWING FOR
DOWEL ASSEMBLY

SHEET 1 OF 2
700D03

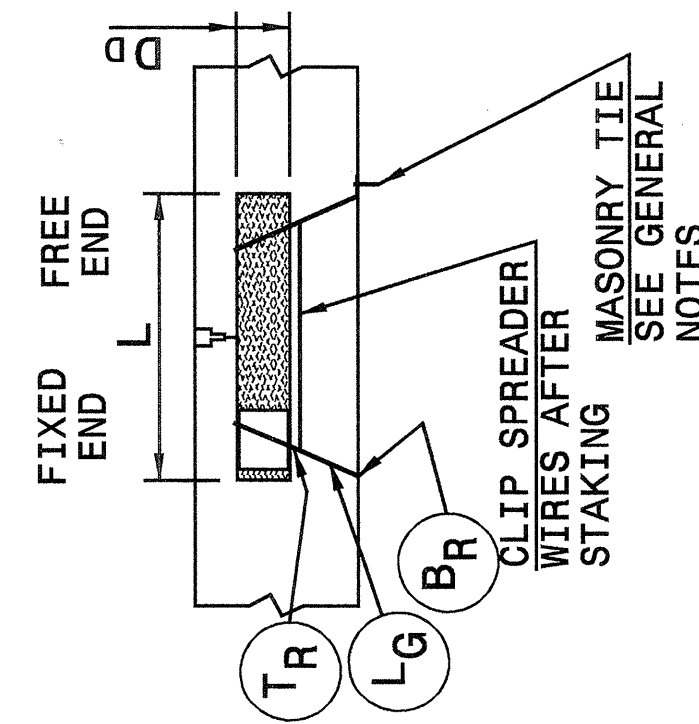
GENERAL NOTES:
 -USE RIGID CONSTRUCTED DOWEL ASSEMBLY CAPABLE OF HOLDING THE DOWEL BAR IN PROPER POSITION DURING PLACEMENT OF CONCRETE AND DESIGNED AS TO PERMIT UNRESTRICTED MOVEMENT OF THE SLAB.
 -USE DOWEL ASSEMBLY APPROVED BY THE ENGINEER PRIOR TO USE.
 -USE DOWEL ASSEMBLIES MANUFACTURED WITH DOWELS ALTERNATELY WELDED TO FRAME MEMBERS.
 -USE STAKING PIN OR APPROVED ALTERNATE.
 -SAW CUT EPOXY COATED DOWELS WITH ONE END BUFFED 19mm x CIRCUMFERENCE TO FACILITATE WELDING OF THE DOWEL TO THE ASSEMBLY FRAME. TOUCH UP OF THE BUFFED AREA WILL NOT BE REQUIRED.
 -RESISTANCE WELD FRAME MEMBERS; DOWELS AND SPREADER WIRES MAY BE ARC WELDED. WELD IN ACCORDANCE WITH AWS WELDING CODE
 -FULLY DIP THE DOWEL ASSEMBLIES TO ASSURE A COMPLETE COATING OF WAX.
 -SEE DETAIL 700D01 FOR DOWEL BAR SIZES.

Note:
 This drawing is dimensioned in millimeters unless otherwise depicted within the drawing.

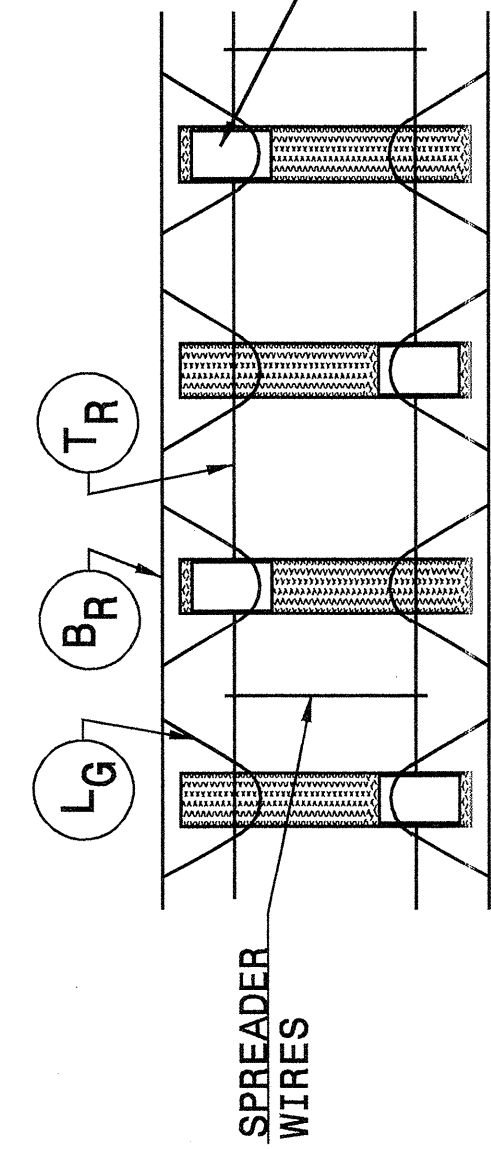
STATE OF
 NORTH CAROLINA
 DEPT. OF TRANSPORTATION
 DIVISION OF HIGHWAYS
 RALEIGH, N. C.

METRIC DETAIL DRAWING FOR
DOWEL ASSEMBLY

SHEET 2 OF 2
700D03

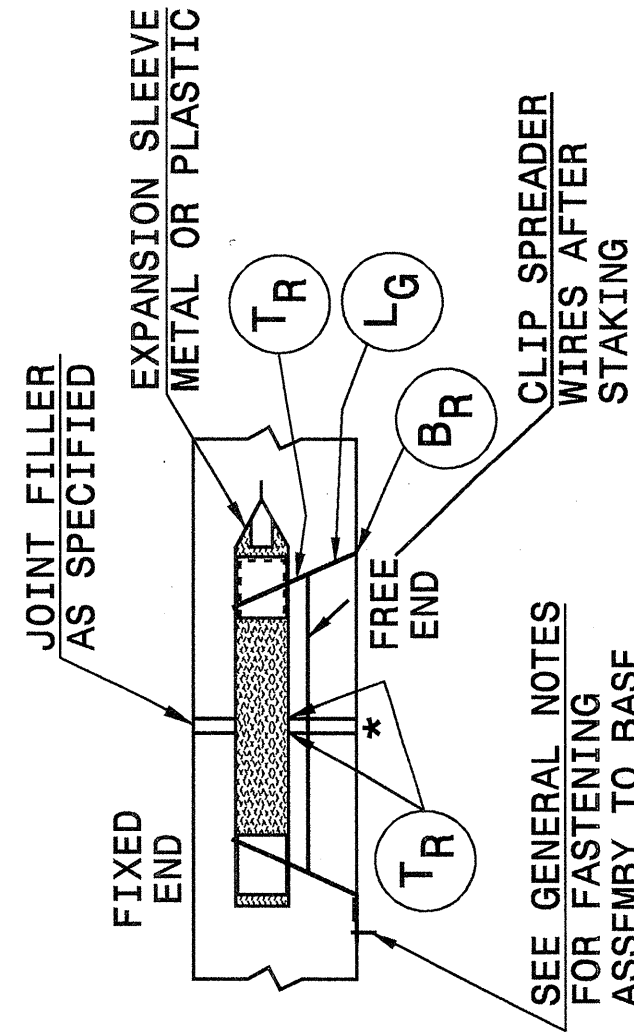


SECTION - CONTRACTION

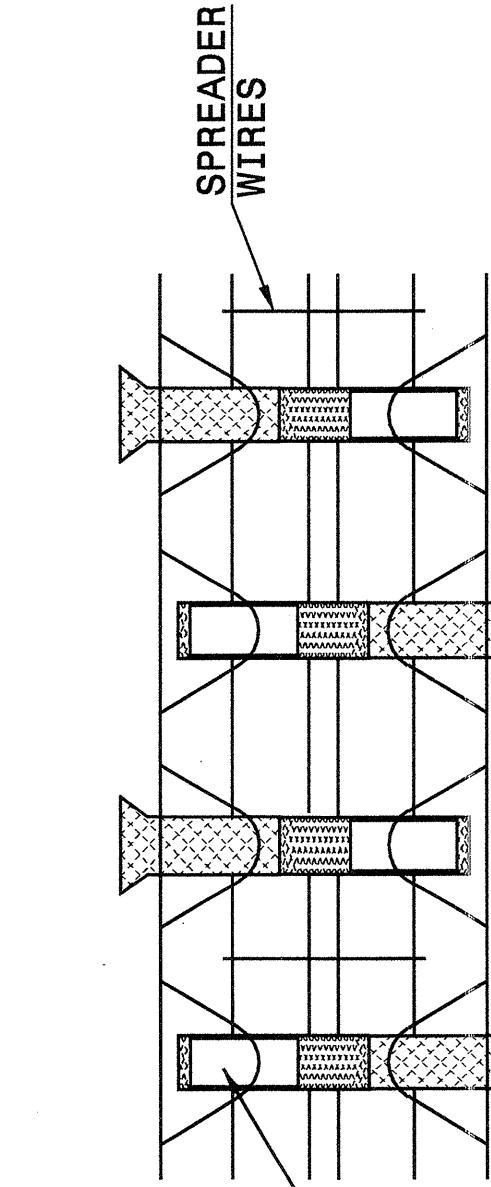


PARTIAL PLAN CONTRACTION

NORMAL

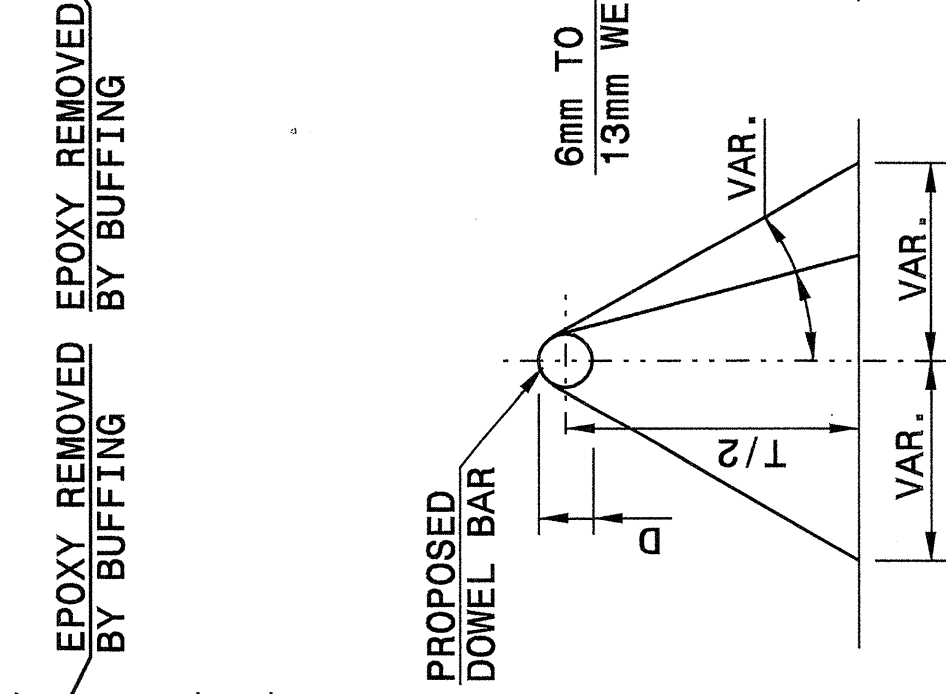


SECTION - EXPANSION



PARTIAL PLAN EXPANSION

NORMAL



CROSS SECTIONAL VIEWS

Note:
 This drawing is dimensioned in millimeters unless otherwise depicted within the drawing.

STATE OF
 NORTH CAROLINA
 DEPT. OF TRANSPORTATION
 DIVISION OF HIGHWAYS
 RALEIGH, N. C.

METRIC DETAIL DRAWING FOR
DOWEL ASSEMBLY

SHEET 2 OF 2
700D03

PROJECT SERVICES UNIT
 STANDARDS AND SPECIAL DESIGN
 Office 919-250-4128 FAX 919-250-4119

SEE PLATE FOR TITLE

ORIGINAL BY: 2002 STANDARDS DATE: 01-15-02
 MODIFIED BY: E.E. WARD DATE: 09-09-04
 CHECKED BY: *[Signature]* DATE: 11/15/04
 FILE SPEC.: stds/02stdstodetails/metric/700d03.dgn

