

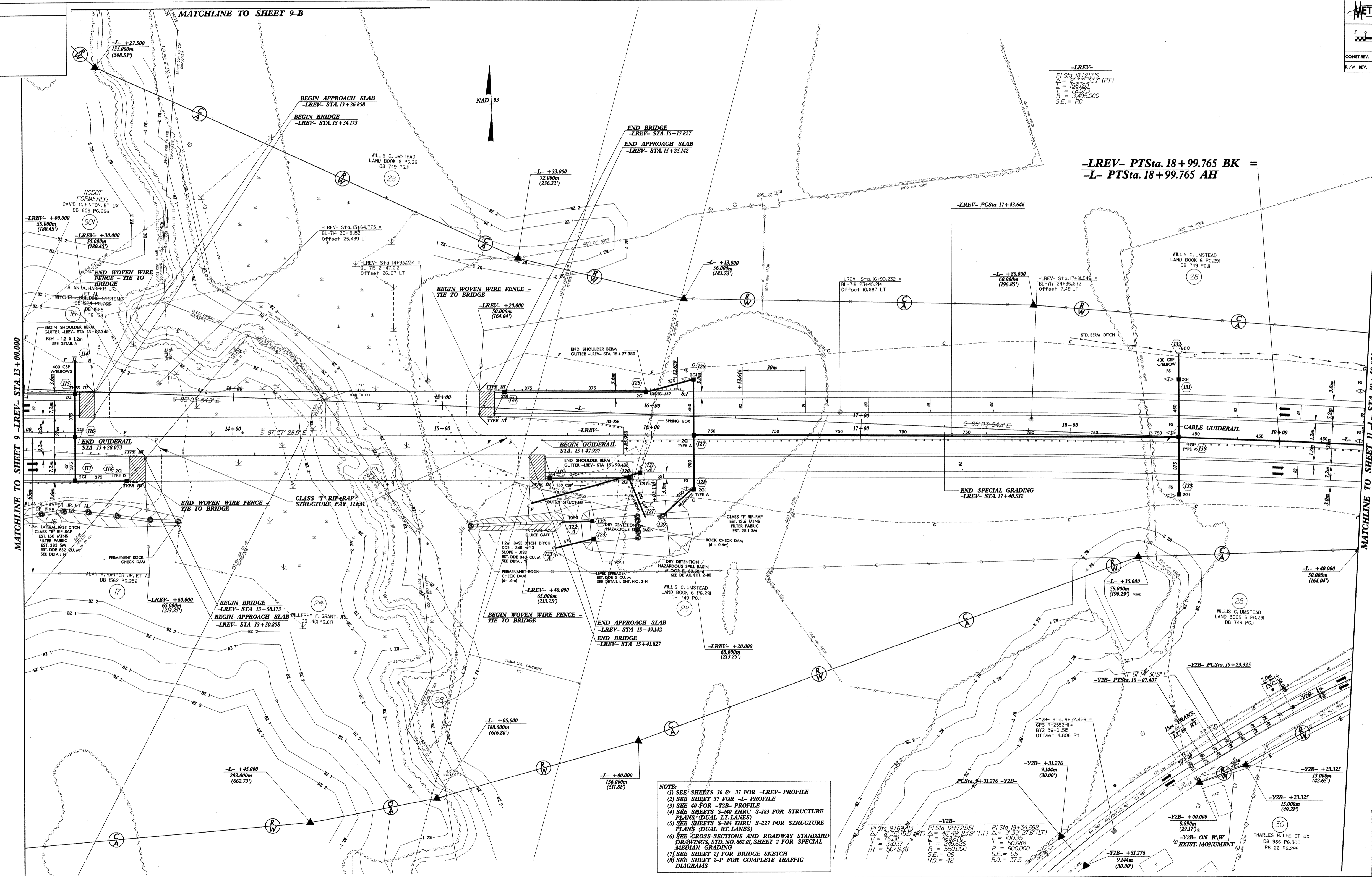
REVISIONS

MATCHLINE TO SHEET 9-B

PROJECT REFERENCE NO. R-255244
 SHEET NO. 10
 ROADWAY DESIGN ENGINEER
 HYDRAULICS ENGINEER
 CONST. REV.
 R./W. REV.

-LREV-
 PI Sta. 18+27.79
 $\Delta = 2^{\circ} 33' 33.7''$ (RT)
 $L = 155.00m$
 $P = 75.00m$
 $R = 550.00m$
 S.E. = RC

-LREV- PTSta. 18+99.765 BK =
 -L- PTSta. 18+99.765 AH



MATCHLINE TO SHEET 9 -LREV- STA. 13+00.000

MATCHLINE TO SHEET II -L- STA. 19+40.000

NOTE:
 (1) SEE SHEETS 36 & 37 FOR -LREV- PROFILE
 (2) SEE SHEET 37 FOR -L- PROFILE
 (3) SEE 40 FOR -Y2B- PROFILE
 (4) SEE SHEETS S-140 THRU S-183 FOR STRUCTURE PLANS (DUAL LT LANES)
 (5) SEE SHEETS S-184 THRU S-227 FOR STRUCTURE PLANS (DUAL RT LANES)
 (6) SEE CROSS-SECTIONS AND ROADWAY STANDARD DRAWINGS, STD. NO. 862.01, SHEET 2 FOR SPECIAL MEDIAN GRADING
 (7) SEE SHEET 17 FOR BRIDGE SKETCH
 (8) SEE SHEET 2-P FOR COMPLETE TRAFFIC DIAGRAMS

-Y2B-
 PI Sta. 9+46.843
 $\Delta = 8^{\circ} 35' 15.8''$ (RT)
 $L = 76.31m$
 $P = 39.17m$
 $R = 507.93m$

PI Sta. 12+72.951
 $\Delta = 4^{\circ} 49' 23.9''$ (RT)
 $L = 46.870m$
 $P = 24.856m$
 $R = 550.00m$
 R.D. = 42

PI Sta. 18+54.862
 $\Delta = 5^{\circ} 39' 27.6''$ (LT)
 $L = 107.74m$
 $P = 53.258m$
 $R = 600.00m$
 S.E. = OS
 R.D. = 37.5

LOCATION:
 TWP. NO.: COUNTY:
 DESIGNED BY: DATE:
 CHECKED BY: DATE: