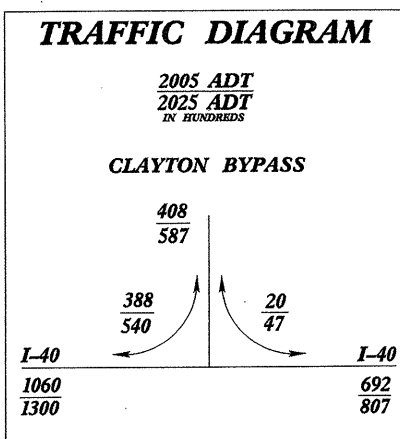


REVISIONS

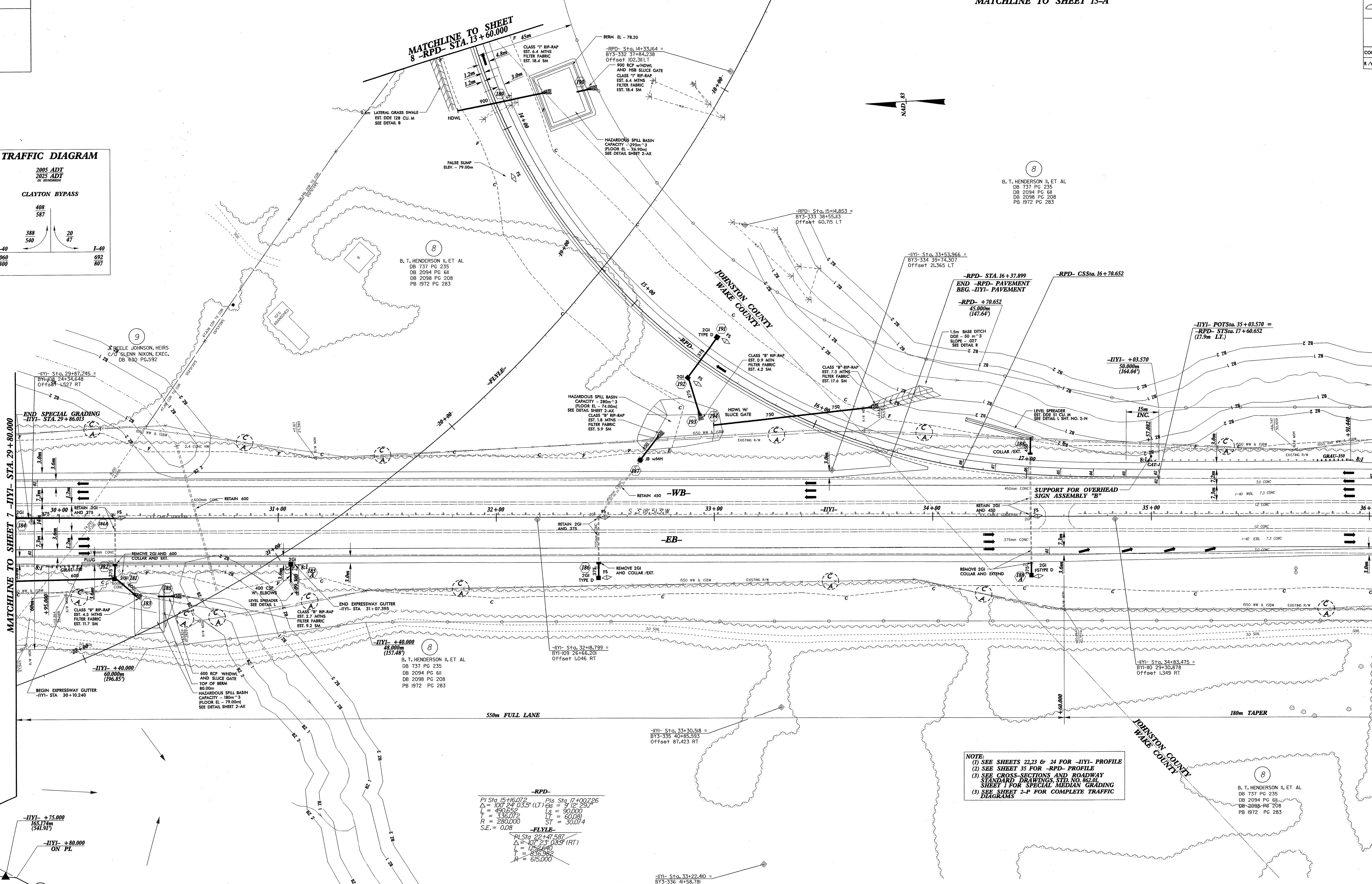
MATCHLINE TO SHEET 15-A

PROJECT REFERENCE NO. R-255244
 SHEET NO. 14
 R/W SHEET NO. 10.11.14
 ROADWAY DESIGN ENGINEER
 HYDRAULICS ENGINEER
 CONST. REV. 1/17/15
 R/W REV. 3/17/15



MATCHLINE TO SHEET 7 -I/I- STA. 29+80.000

MATCHLINE TO SHEET 15 -I/I- STA. 36+10.000



NOTE:
 (1) SEE SHEETS 22.23 & 24 FOR -I/I- PROFILE
 (2) SEE SHEET 35 FOR -R/P- PROFILE
 (3) SEE CROSS SECTIONS AND ROADWAY STANDARD DRAWINGS SET NO. 863.01
 SHEET 1 FOR SPECIAL MEDIAN GRADING DIAGRAMS
 (4) SEE SHEET 2-P FOR COMPLETE TRAFFIC DIAGRAMS

-R/P-
 P1 Sta. 15+16.072 P1s Sta. 17+98.726
 A = 109.28 0.335 (LT) P2 = 3 P2 Sta. 17+98.726
 L = 480.622 Ls = 90.000
 T = 330.072 Lt = 60.000
 R = 280.000 ST = 3007.4
 S.E. = 0.08

-I/I-
 P1 Sta. 29+47.507
 A = 117.23 0.339 (RT)
 L = 126.560
 T = 126.560
 R = 615.000

LOCATION:
 TWP. NO.: COUNTY:
 DESIGNED BY: DATE:
 CHECKED BY: DATE: