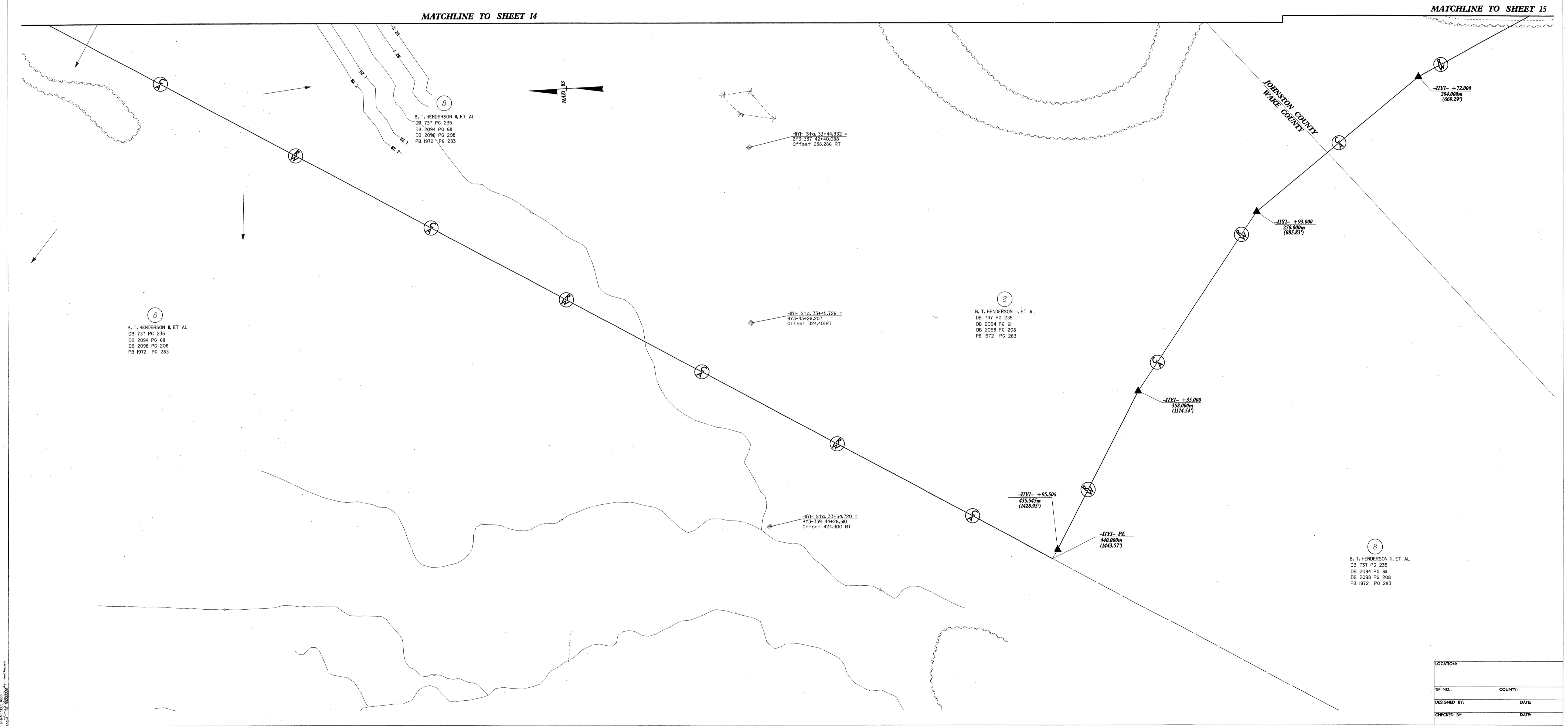


NO.	REVISIONS

	PROJECT REFERENCE NO.	SHEET NO.
	R-2552A4	16-A
	R.O.W. SHEET NO.	16-24
	ROADWAY DESIGN ENGINEER	
CONST. REV.		
R./W. REV.		

THIS SHEET IS FOR RIGHT OF WAY ACQUISITION ONLY.



8
B. T. HENDERSON II, ET AL
DB 737 PG 235
DB 2094 PG 68
DB 2098 PG 208
PB 1972 PG 283

8
B. T. HENDERSON II, ET AL
DB 737 PG 235
DB 2094 PG 68
DB 2098 PG 208
PB 1972 PG 283

8
B. T. HENDERSON II, ET AL
DB 737 PG 235
DB 2094 PG 68
DB 2098 PG 208
PB 1972 PG 283

8
B. T. HENDERSON II, ET AL
DB 737 PG 235
DB 2094 PG 68
DB 2098 PG 208
PB 1972 PG 283

LOCATION:	
TIP NO.:	COUNTY:
DESIGNED BY:	DATE:
CHECKED BY:	DATE:

17 MAR 2006 09:53 AM
 J:\Projects\2552A4\16-A.dwg
 BTH2552A4.dwg
 B.T. Henderson II, et al

RD223230 Thursday March 17 2006 Interim 14.m JLT/teague rd/0606c34