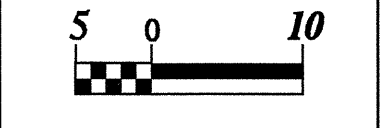


07/26/05

★ BM # R-2552-7 EL 85.746  
1.706m LT -IYI- STA 24+48.548

LEFT DITCH -----  
RIGHT DITCH -----

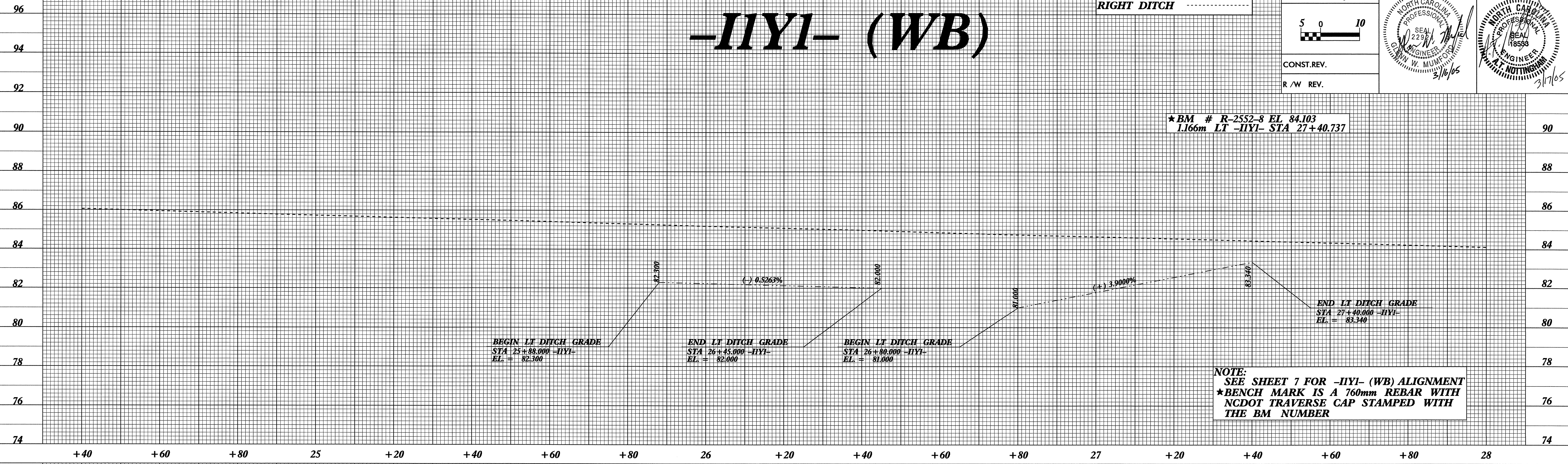


CONST. REV.  
R /W REV.

PROJECT REFERENCE NO. <b>R-2552A4</b>	SHEET NO. <b>21</b>
ROADWAY DESIGN ENGINEER	HYDRAULICS ENGINEER

# -IYI- (WB)

★ BM # R-2552-8 EL 84.103  
1.166m LT -IYI- STA 27+40.737

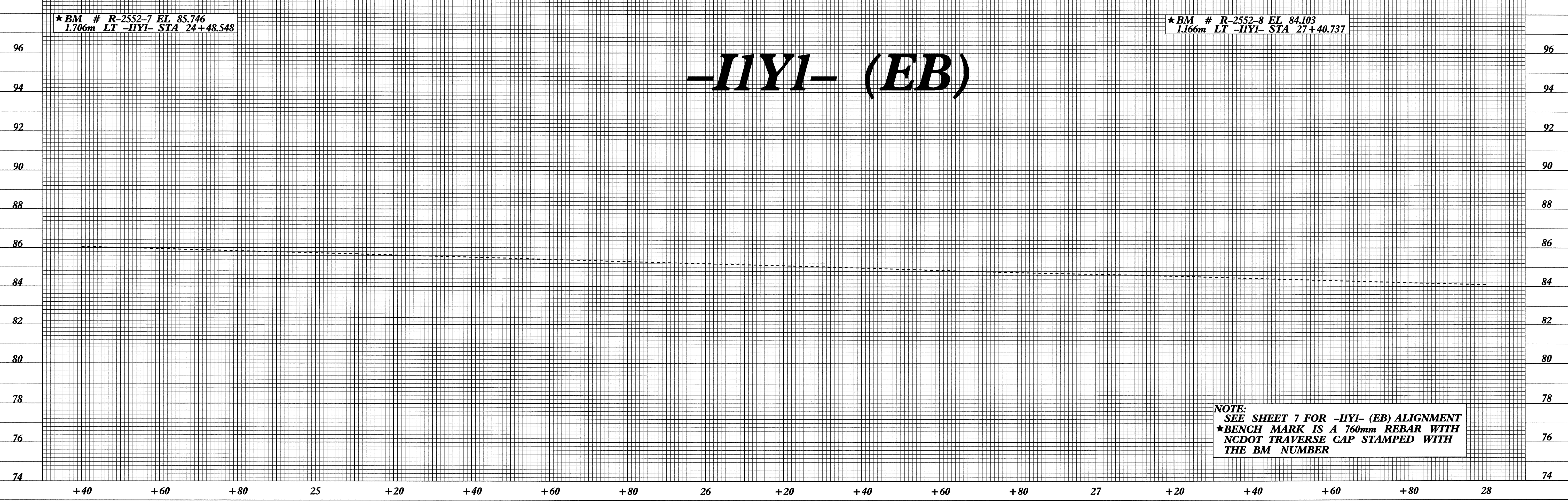


NOTE:  
SEE SHEET 7 FOR -IYI- (WB) ALIGNMENT  
★ BENCH MARK IS A 760mm REBAR WITH  
NCDOT TRAVERSE CAP STAMPED WITH  
THE BM NUMBER

★ BM # R-2552-7 EL 85.746  
1.706m LT -IYI- STA 24+48.548

★ BM # R-2552-8 EL 84.103  
1.166m LT -IYI- STA 27+40.737

# -IYI- (EB)



NOTE:  
SEE SHEET 7 FOR -IYI- (EB) ALIGNMENT  
★ BENCH MARK IS A 760mm REBAR WITH  
NCDOT TRAVERSE CAP STAMPED WITH  
THE BM NUMBER

07-18-2005 11:40 AM  
C:\Users\jrb\Documents\jrb\2552A4\2552A4.dwg  
BCFowler