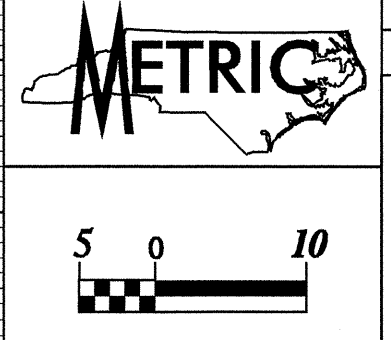


-IYYI- (WB)

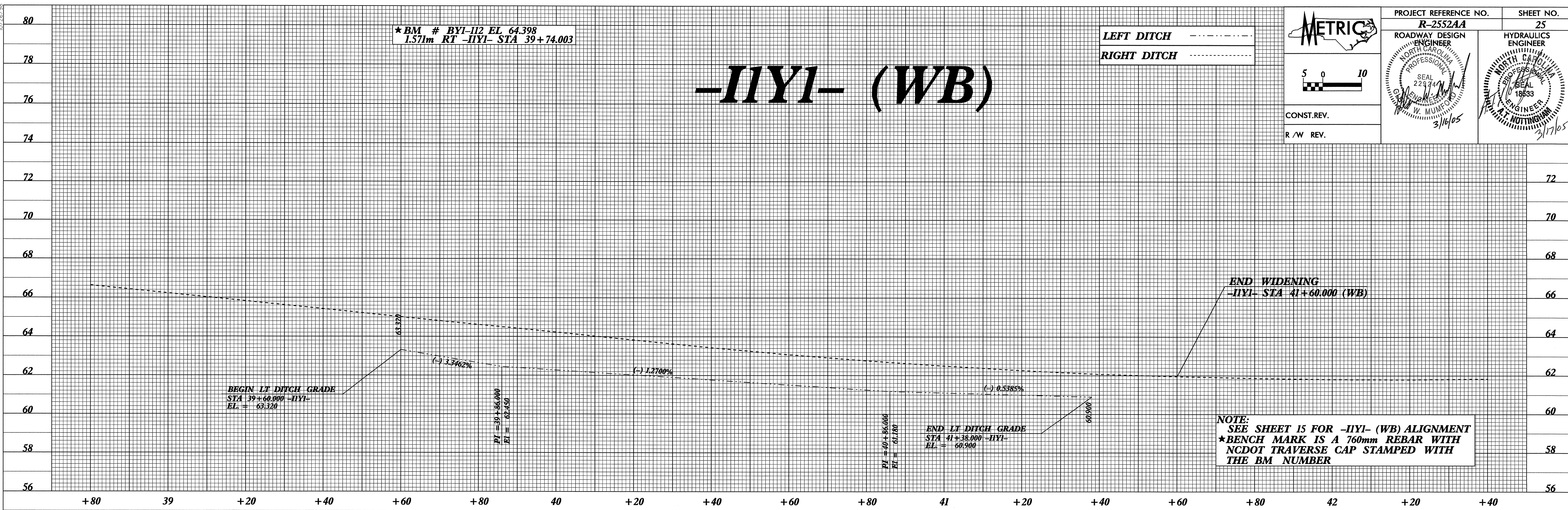
★ BM # BYI-112 EL 64.398
1.571m RT -IYYI- STA 39+74.003

LEFT DITCH
RIGHT DITCH



PROJECT REFERENCE NO. R-255244	SHEET NO. 25
ROADWAY DESIGN ENGINEER W. MUMFORD SEAL 229744 3/16/05	HYDRAULICS ENGINEER A. NOTTINGHAM SEAL 18833 3/17/05

CONST. REV.
R / W REV.



NOTE:
SEE SHEET 15 FOR -IYYI- (WB) ALIGNMENT
★ BENCH MARK IS A 760mm REBAR WITH
NCDOT TRAVERSE CAP STAMPED WITH
THE BM NUMBER

-IYYI- (EB)

★ BM # BYI-112 EL 64.398
1.571m RT -IYYI- STA 39+74.003



NOTE:
SEE SHEET 15 FOR -IYYI- (EB) ALIGNMENT
★ BENCH MARK IS A 760mm REBAR WITH
NCDOT TRAVERSE CAP STAMPED WITH
THE BM NUMBER

07-MAR-2005 11:58 B:\cortier\p251\rd\251.dwg