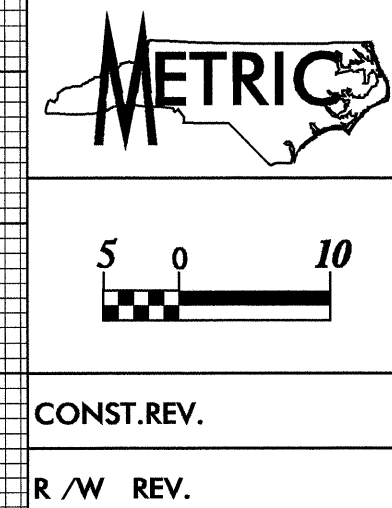


07/26/95

15-MAR-2005 15:11  
JL Teague  
C:\p0223230\intermeop1

LEFT DITCH  
RIGHT DITCH



PROJECT REFERENCE NO. **R-2552AA** SHEET NO. **29**

ROADWAY DESIGN ENGINEER

NORTH CAROLINA PROFESSIONAL ENGINEER SEAL 22924  
W. MUMFORD  
3/16/05

HYDRAULICS ENGINEER  
NORTH CAROLINA PROFESSIONAL ENGINEER SEAL 18583  
E.T. NOTTINGHAM  
3/17/05

CONST. REV.  
R / W REV.

# -FLYLEREV-

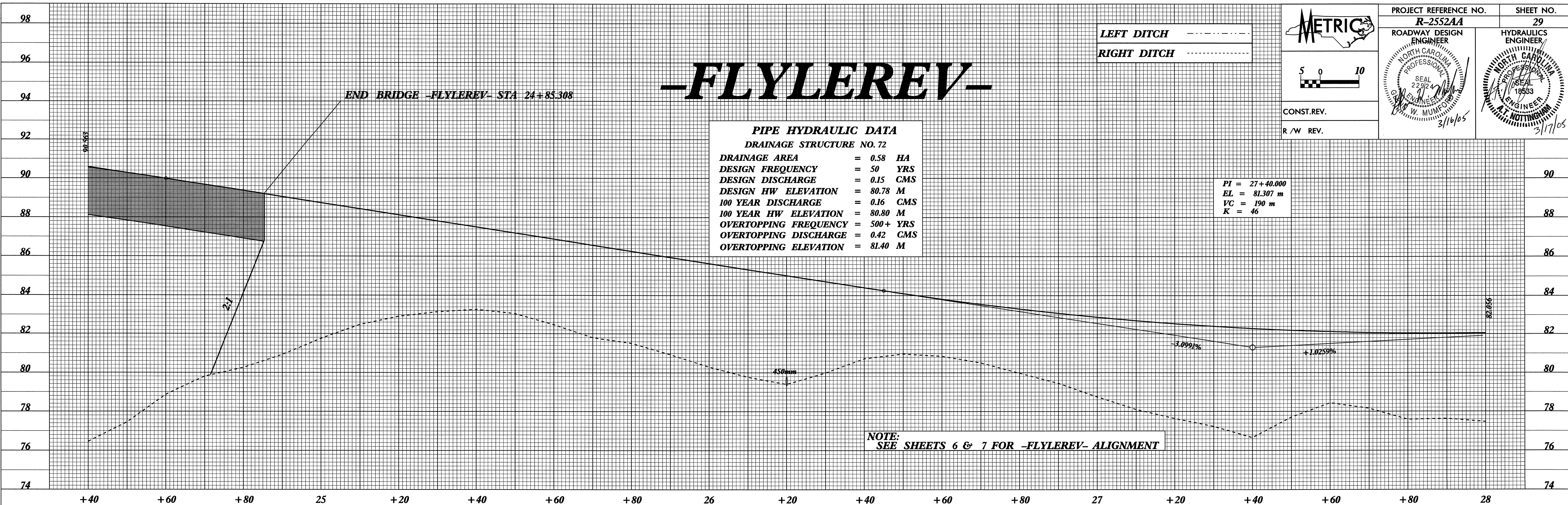
END BRIDGE -FLYLEREV- STA 24+85.308

**PIPE HYDRAULIC DATA**  
DRAINAGE STRUCTURE NO. 72

DRAINAGE AREA	= 0.58 HA
DESIGN FREQUENCY	= 50 YRS
DESIGN DISCHARGE	= 0.15 CMS
DESIGN HW ELEVATION	= 80.78 M
100 YEAR DISCHARGE	= 0.16 CMS
100 YEAR HW ELEVATION	= 80.80 M
OVERTOPPING FREQUENCY	= 500+ YRS
OVERTOPPING DISCHARGE	= 0.42 CMS
OVERTOPPING ELEVATION	= 81.40 M

PI = 27+40.000  
EL = 81.307 m  
VC = 190 m  
K = 46

NOTE:  
SEE SHEETS 6 & 7 FOR -FLYLEREV- ALIGNMENT



★ BM # BY1-105 EL. 87.038  
1.749m RT -IY1- STA 22+13.014

# -FLYLEREV-

PROPOSED UNDERCUT

**PIPE HYDRAULIC DATA**  
DRAINAGE STRUCTURE NO. 45

DRAINAGE AREA	= 3.92 HA
DESIGN FREQUENCY	= 50 YRS
DESIGN DISCHARGE	= 0.95 CMS
DESIGN HW ELEVATION	= 81.93 M
100 YEAR DISCHARGE	= 1.00 CMS
100 YEAR HW ELEVATION	= 81.96 M
OVERTOPPING FREQUENCY	= 500+ YRS
OVERTOPPING DISCHARGE	= 1.50 CMS
OVERTOPPING ELEVATION	= 82.31 M

NOTE:  
SEE SHEET 6 FOR -FLYLEREV- ALIGNMENT  
★BENCH MARK IS A 760mm REBAR WITH  
NCDOT TRAVERSE CAP STAMPED WITH  
THE BM NUMBER

