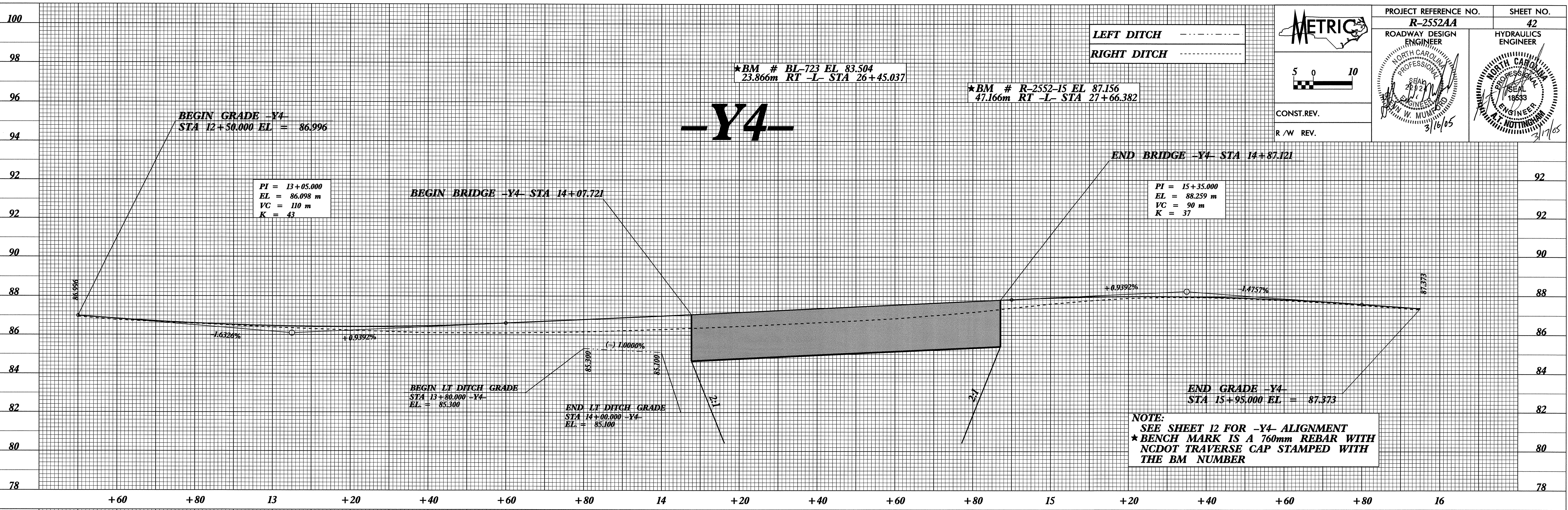


0/26/06



*BM # BL-723 EL 83.504
23.866m RT -L- STA 26+45.037

*BM # R-2552-15 EL 87.156
47.166m RT -L- STA 27+66.382

METRIC

5 0 10

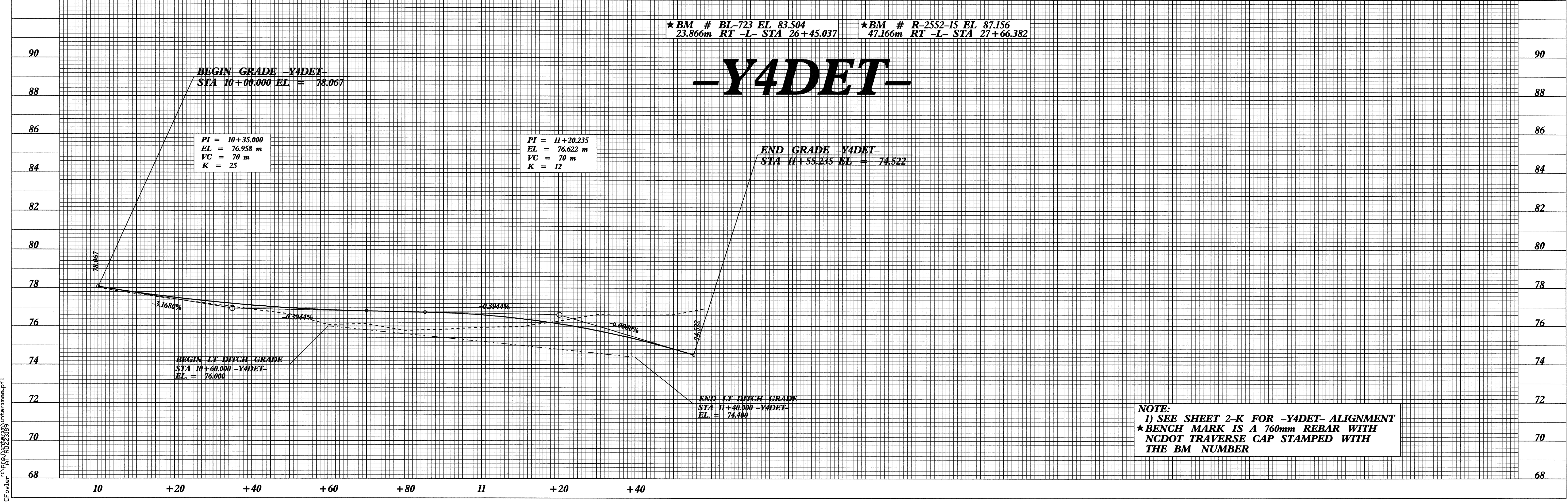
CONST. REV.
R/W REV.

PROJECT REFERENCE NO. **R-2552AA**
SHEET NO. **42**

ROADWAY DESIGN ENGINEER
HYDRAULICS ENGINEER

NORTH CAROLINA PROFESSIONAL ENGINEER
SEAL 2002
W. W. MUMFORD
9/16/05

NORTH CAROLINA PROFESSIONAL ENGINEER
SEAL 19833
A. A. NOTTINGHAM
3/17/05



*BM # BL-723 EL 83.504
23.866m RT -L- STA 26+45.037

*BM # R-2552-15 EL 87.156
47.166m RT -L- STA 27+66.382

08-FEB-2005 07:20
BCC:\w\p\p\10252525\inter\map.pfl