

METRIC

CONST. REV.
R/W REV.

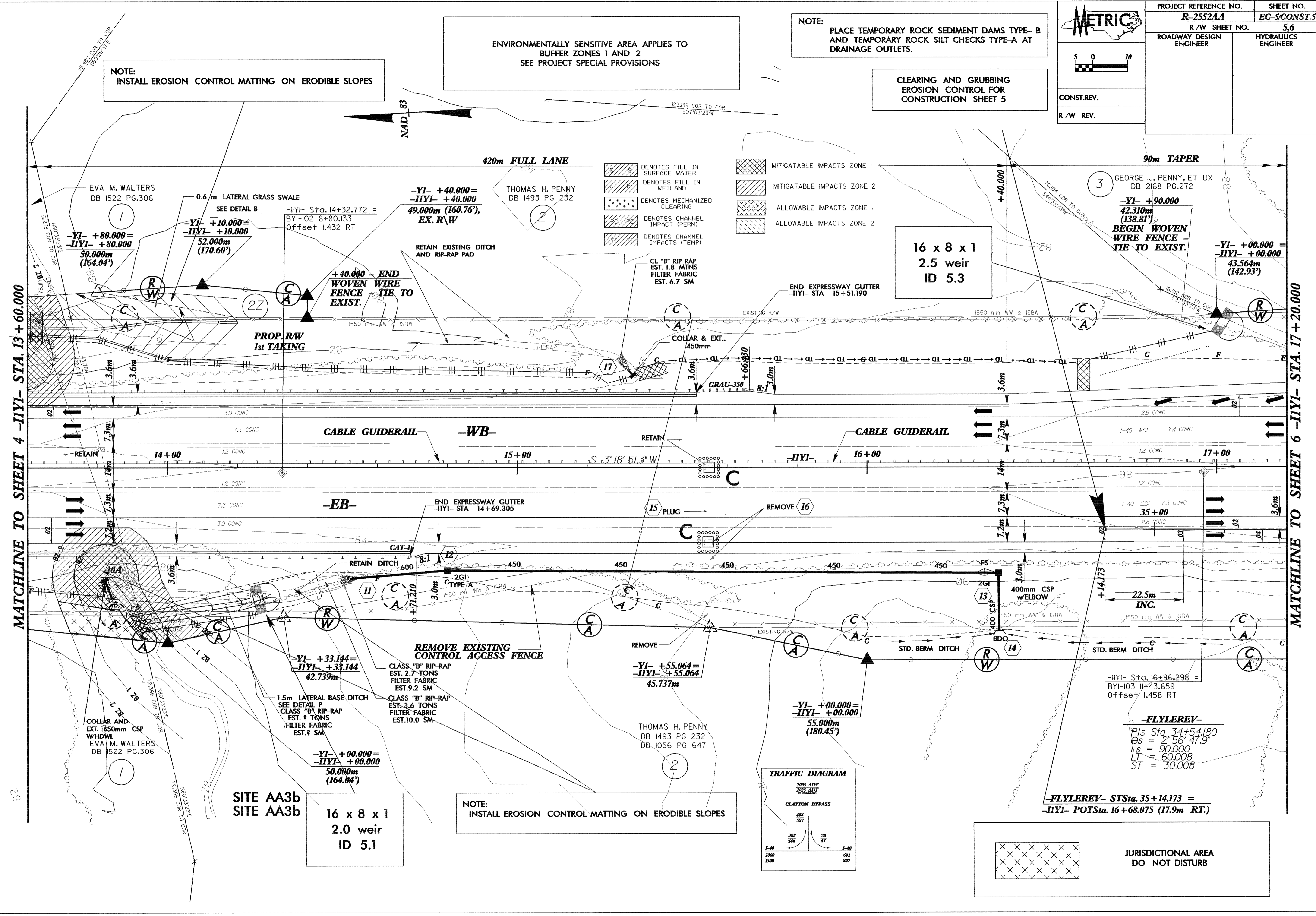
PROJECT REFERENCE NO. R-2552AA	SHEET NO. EC-5CONST.5
R/W SHEET NO. 5,6	HYDRAULICS ENGINEER
ROADWAY DESIGN ENGINEER	

ENVIRONMENTALLY SENSITIVE AREA APPLIES TO BUFFER ZONES 1 AND 2
SEE PROJECT SPECIAL PROVISIONS

NOTE:
PLACE TEMPORARY ROCK SEDIMENT DAMS TYPE- B AND TEMPORARY ROCK SILT CHECKS TYPE-A AT DRAINAGE OUTLETS.

CLEARING AND GRUBBING EROSION CONTROL FOR CONSTRUCTION SHEET 5

NOTE:
INSTALL EROSION CONTROL MATTING ON ERODIBLE SLOPES



MATCHLINE TO SHEET 4 -IYYI- STA. 13+60.000

MATCHLINE TO SHEET 6 -IYYI- STA. 17+20.000

82

EVA M. WALTERS
DB 1522 PG.306
-YI- +80.000 =
-IYYI- +80.000
50.000m
(164.04')

-YI- +10.000 =
-IYYI- +10.000
52.000m
(170.60')

-YI- +40.000 =
-IYYI- +40.000
49.000m (160.76'),
EX. R/W

3 GEORGE J. PENNY, ET UX
DB 2168 PG.272
-YI- +90.000
42.310m
(138.81')
BEGIN WOVEN
WIRE FENCE
TIE TO EXIST.

-YI- +00.000 =
-IYYI- +00.000
43.564m
(142.93')

-YI- +33.144 =
-IYYI- +33.144
42.739m

-YI- +00.000 =
-IYYI- +00.000
50.000m
(164.04')

-YI- +55.064 =
-IYYI- +55.064
45.737m

-YI- +00.000 =
-IYYI- +00.000
55.000m
(180.45')

-FLYLEREV-
Pis Sta. 34+54.180
Os = 2' 56' 47.9"
Ls = 90.000
LT = 60.008
ST = 30.008

-FLYLEREV- STSta. 35+14.173 =
-IYYI- POTSta. 16+68.075 (17.9m RT.)

SITE AA3b
SITE AA3b

16 x 8 x 1
2.0 weir
ID 5.1

NOTE:
INSTALL EROSION CONTROL MATTING ON ERODIBLE SLOPES