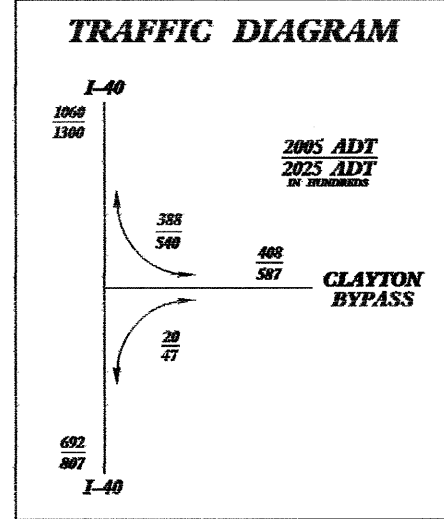
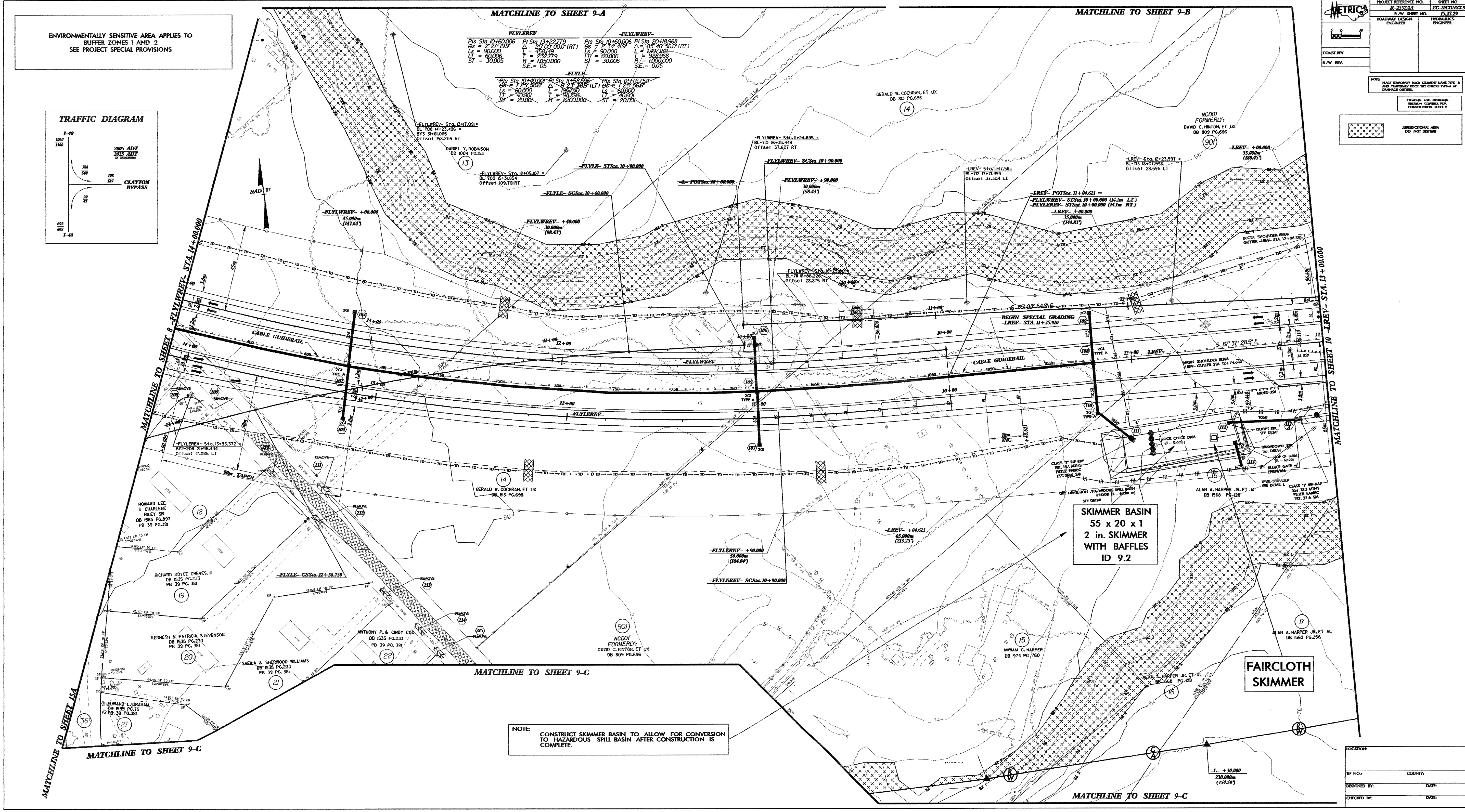


ENVIRONMENTALLY SENSITIVE AREA APPLIES TO BUFFER ZONES 1 AND 2 SEE PROJECT SPECIAL PROVISIONS



PROJECT REFERENCE NO. R-25224A SHEET NO. EC-1002070
 R/W SHEET NO. 15,27,29
 ROADWAY DESIGN ENGINEER TROYALIS ENGINEER
 CONSULTANT
 R/W REV.
 NOTES:
 1. PLACE TEMPORARY ROCK SPURTS BANK TYPE 5 AND TEMPORARY ROCK BARS CHECK TYPE A.
 2. CLEARING AND GRUBBING BEGIN CORNER FOR CONSTRUCTION SHEET 9
 3. JURISDICTIONAL AREA DO NOT DISTURB



NOTE: CONSTRUCT SKIMMER BASIN TO ALLOW FOR CONVERSION TO HAZARDOUS SPILL BASIN AFTER CONSTRUCTION IS COMPLETE.

LOCATION:
 TWP NO.: COUNTY:
 DESIGNED BY: DATE:
 CHECKED BY: DATE: