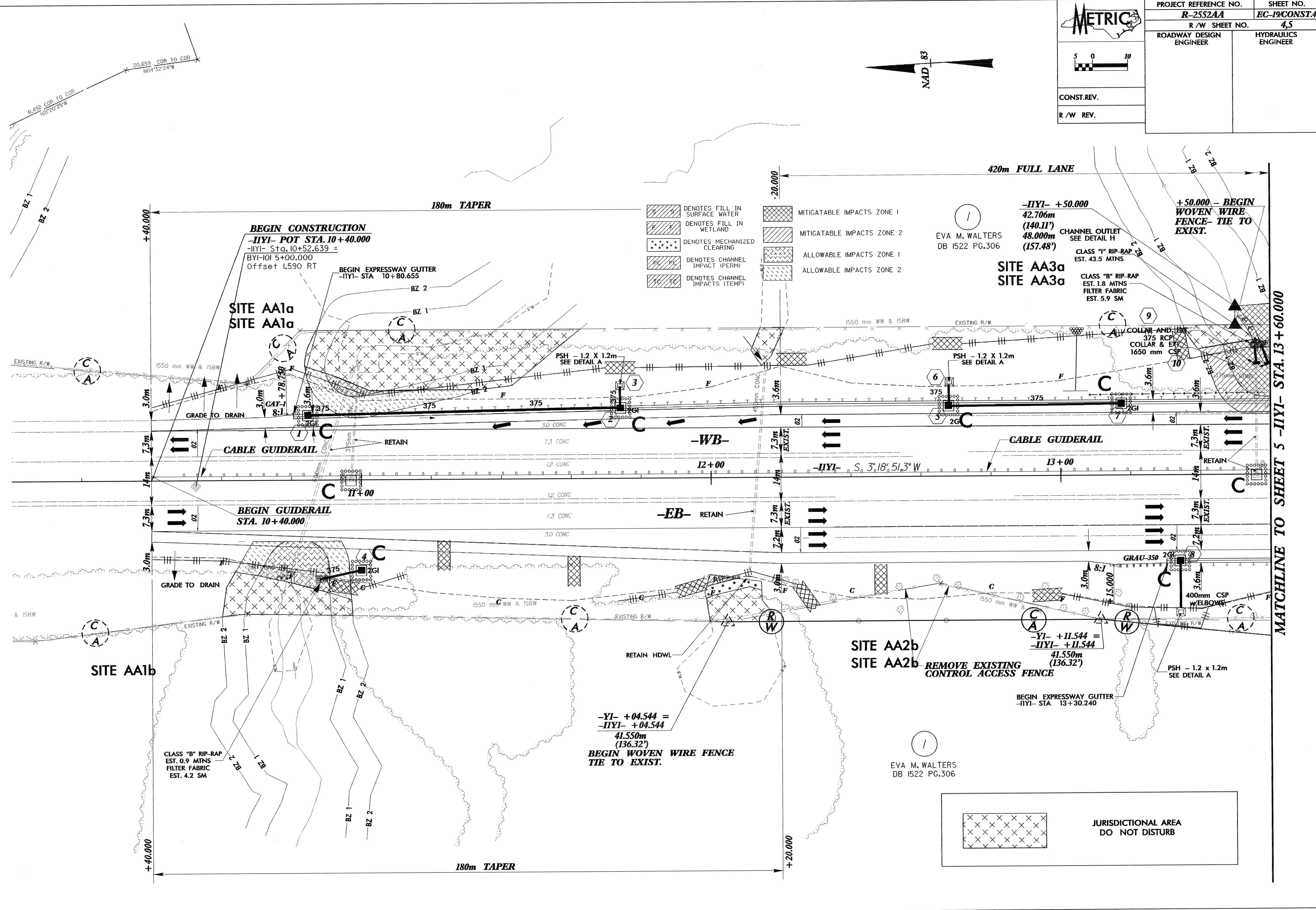
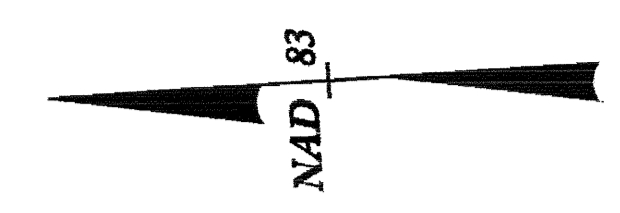


PROJECT REFERENCE NO. <b>R-2552AA</b>	SHEET NO. <b>EC-19/CONST.4</b>
R/W SHEET NO. <b>4.5</b>	
ROADWAY DESIGN ENGINEER	HYDRAULICS ENGINEER
CONST.REV.	
R/W REV.	



- DENOTES FILL IN SURFACE WATER
- DENOTES FILL IN WETLAND
- DENOTES MECHANIZED CLEARING
- DENOTES CHANNEL IMPACT (PERM)
- DENOTES CHANNEL IMPACTS (TEMP)
- MITIGATABLE IMPACTS ZONE 1
- MITIGATABLE IMPACTS ZONE 2
- ALLOWABLE IMPACTS ZONE 1
- ALLOWABLE IMPACTS ZONE 2

1  
EVA M. WALTERS  
DB 1522 PG.306

SITE AA3a  
SITE AA3a

-IYYI- +50.000  
42.706m  
(140.11')  
48.000m  
(157.48')

CHANNEL OUTLET  
SEE DETAIL H  
CLASS "I" RIP-RAP  
EST. 43.5 MTNS  
CLASS "B" RIP-RAP  
EST. 1.8 MTNS  
FILTER FABRIC  
EST. 5.9 SM

+50.000 - BEGIN  
WOVEN WIRE  
FENCE - TIE TO  
EXIST.

-YI- +04.544 =  
-IYYI- +04.544  
41.550m  
(136.32')  
BEGIN WOVEN WIRE FENCE  
TIE TO EXIST.

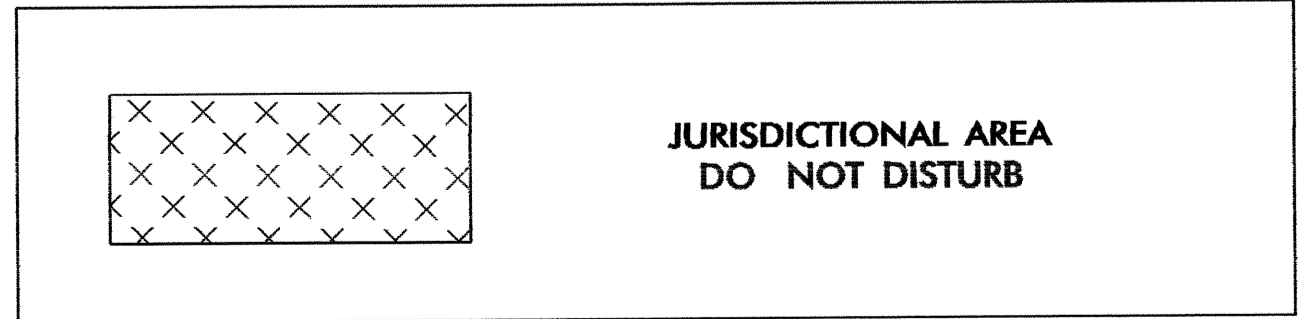
SITE AA2b  
SITE AA2b

REMOVE EXISTING  
CONTROL ACCESS FENCE

-YI- +11.544 =  
-IYYI- +11.544  
41.550m  
(136.32')

BEGIN EXPRESSWAY GUTTER  
-IYYI- STA 13+30.240

1  
EVA M. WALTERS  
DB 1522 PG.306



MATCHLINE TO SHEET 5 -IYYI- STA. 13+60.000